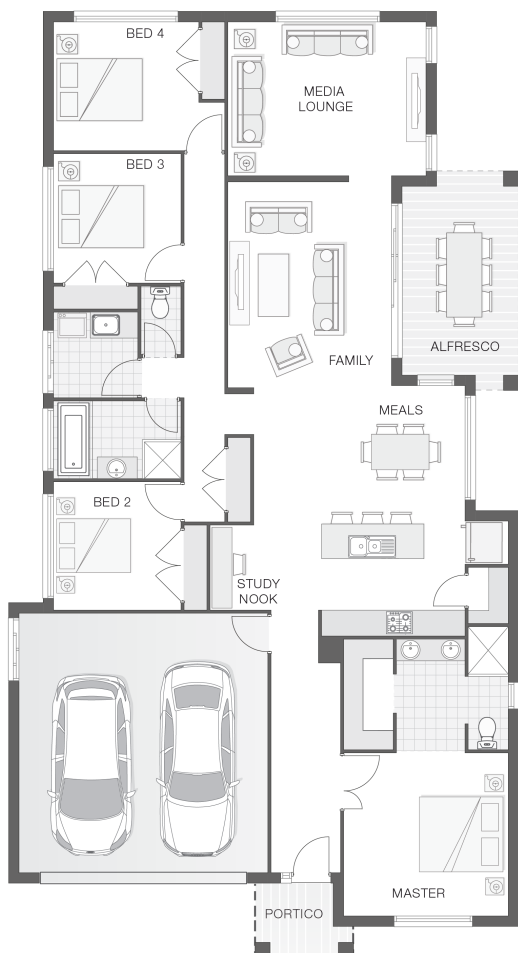


The Amity - MK2

4 2 2 24 sq

Facade name: Taylor

House Plan:



LOT #207

Gukandi Estate

Address: Gukandi Street, Laurieton, 2443



714 m²

House and land package price:

From **\$612,400***

About package:

FIXED TURN-KEY PRICE \$612,400

Adenbrook Homes Mid North Coast are a locally owned and operated builder, backed by an award winning franchise. We offer turn-key pricing, designed to give you everything you need to move straight in - without the hidden costs.

The Amity home design considers both simplicity and convenience for modern family living. Featuring a generous open plan living zone including kitchen, meals and family rooms with adjoining alfresco dining area, entertaining has never been so easy. The master retreat with ensuite and walk-in-robe is cleverly positioned at the opposing end of the home to other bedrooms, providing great separation and privacy for the entire family.

- Ultimate Bundle Upgrade
- 20mm stone benchtops to kitchen
- BAL (Bushfire Attack Level) Allowance
- Quality Timber Look Flooring, Carpet and Tiles
- 900mm Cooker and Dishwasher
- Rainwater Tank Letterbox and Clothesline
- Concrete Alfresco and Portico areas
- Brushed Concrete Driveway
- Flyscreens
- Remote Controlled Garage Door + 2 remotes
- Site works allowance
- 2570mm high ceilings

ENQUIRE NOW:

Kristen Curry • P: 0401091313 • E: portmacquarie.display@adenbrook.com.au

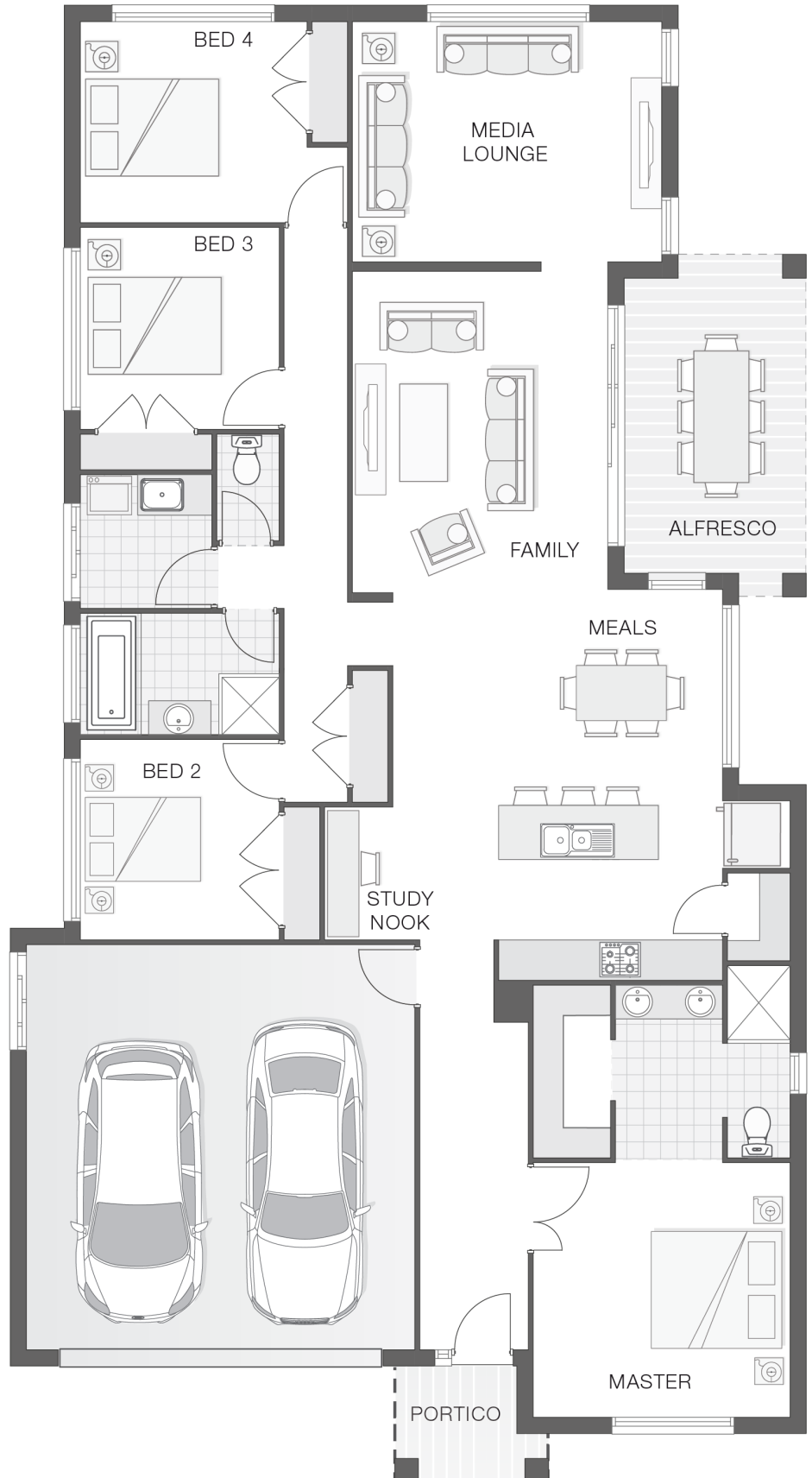
Plans and designs depicted may change with facade selection. All drawings and photographs are for illustrative purposes only. This work is exclusively owned by AB Aust. IP Pty Ltd (ACN 163 575 077) and cannot be reproduced or copied wholly or in part, in any form without permission of AB Aust. IP Pty Ltd. Any prices in this document include GST, are subject to change without notice, relate only to the base house price and standard inclusions. Site costs will vary depending on site conditions, local Council requirements, estate guidelines and any other statutory requirements applicable. Adenbrook Homes does not have a hold on the block, this package is subject to land availability and you securing the land through the land agent directly. For more information please speak to one of our friendly New Home Consultants.

House Features:

- ✓ 20mm stone benchtops to kitchen
- ✓ 900mm Cooker and Dishwasher
- ✓ Brushed Concrete Driveway
- ✓ Flyscreens
- ✓ Remote Controlled Garage Door + 2 remotes
- ✓ 1200mm Hinged Wideline Aluminium Entry Door
- ✓ Ultimate upgrade bundle
- ✓ Concrete Alfresco and Portico areas
- ✓ BAL (Bushfire Attack Level) Allowance
- ✓ Site works allowance
- ✓ 2570mm high ceilings
- ✓ Dishwasher
- ✓ Quality Timber Look Flooring, Carpet and Tiles

Estate Features:

- ✓ Large block sizes
- ✓ Close to beaches
- ✓ Serene leafy outlook
- ✓ Close to shops and town centre



ENQUIRE NOW:

Kristen Curry • P: 0401091313 • E: portmacquarie.display@adenbrook.com.au

Plans and designs depicted may change with facade selection. All drawings and photographs are for illustrative purposes only. This work is exclusively owned by AB Aust. IP Pty Ltd (ACN 163 575 077) and cannot be reproduced or copied wholly or in part, in any form without permission of AB Aust. IP Pty Ltd. Any prices in this document include GST, are subject to change without notice, relate only to the base house price and standard inclusions. Site costs will vary depending on site conditions, local Council requirements, estate guidelines and any other statutory requirements applicable. Adenbrook Homes does not have a hold on the block, this package is subject to land availability and you securing the land through the land agent directly. For more information please speak to one of our friendly New Home Consultants.