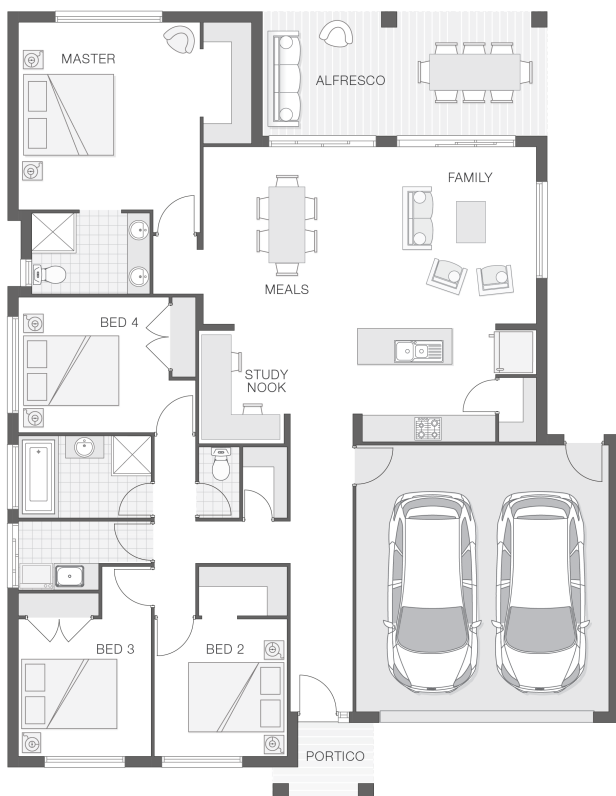


## The Chelsea

 4  2  2  23 sq

Facade name: Bilson

### House Plan:



### LOT #346

Innes Lake Estate

Address: Koel Crescent, Port Macquarie, 2444



767.5 m<sup>2</sup>

House and land package price:

From **\$599,410\***

### About package:

Amazing value brand new home concept where you can pick the colours and selections. Have your new home in time for Christmas. The Chelsea design is a real family home, the Chelsea features a central living zone with kitchen, meals and family room overlooking alfresco area with a convenient study nook, making homework a breeze. The master retreat is complete with ensuite and walk-in-robe and is privately tucked away at the rear of the home. The additional bedrooms are all generous in size and are separate from the main living zones offering good separation and privacy. When built this home will allow for side access to the very large back yard with room for everything from a shed, pool, cricket pitch or lots of room for your family pet.

Experience outstanding value with our Ultimate Bundle Upgrade;

- 20mm stone benchtops to kitchen
- BAL (Bushfire Attack Level) Allowance
- Quality Timber Look Flooring, Carpet and Tiles
- 900mm Cooker and Dishwasher
- Rainwater Tank Letterbox and Clothesline
- Concrete Alfresco and Portico areas
- Brushed Concrete Driveway
- Flyscreens
- Remote Controlled Garage Door + 2 remotes
- Site works allowance
- 2570mm high ceilings
- Hume Savoy 1200 hinged entry door

### ENQUIRE NOW:

Angie Walford • P: 0429626412 • E: [portmacquarie.display@adenbrook.com.au](mailto:portmacquarie.display@adenbrook.com.au)

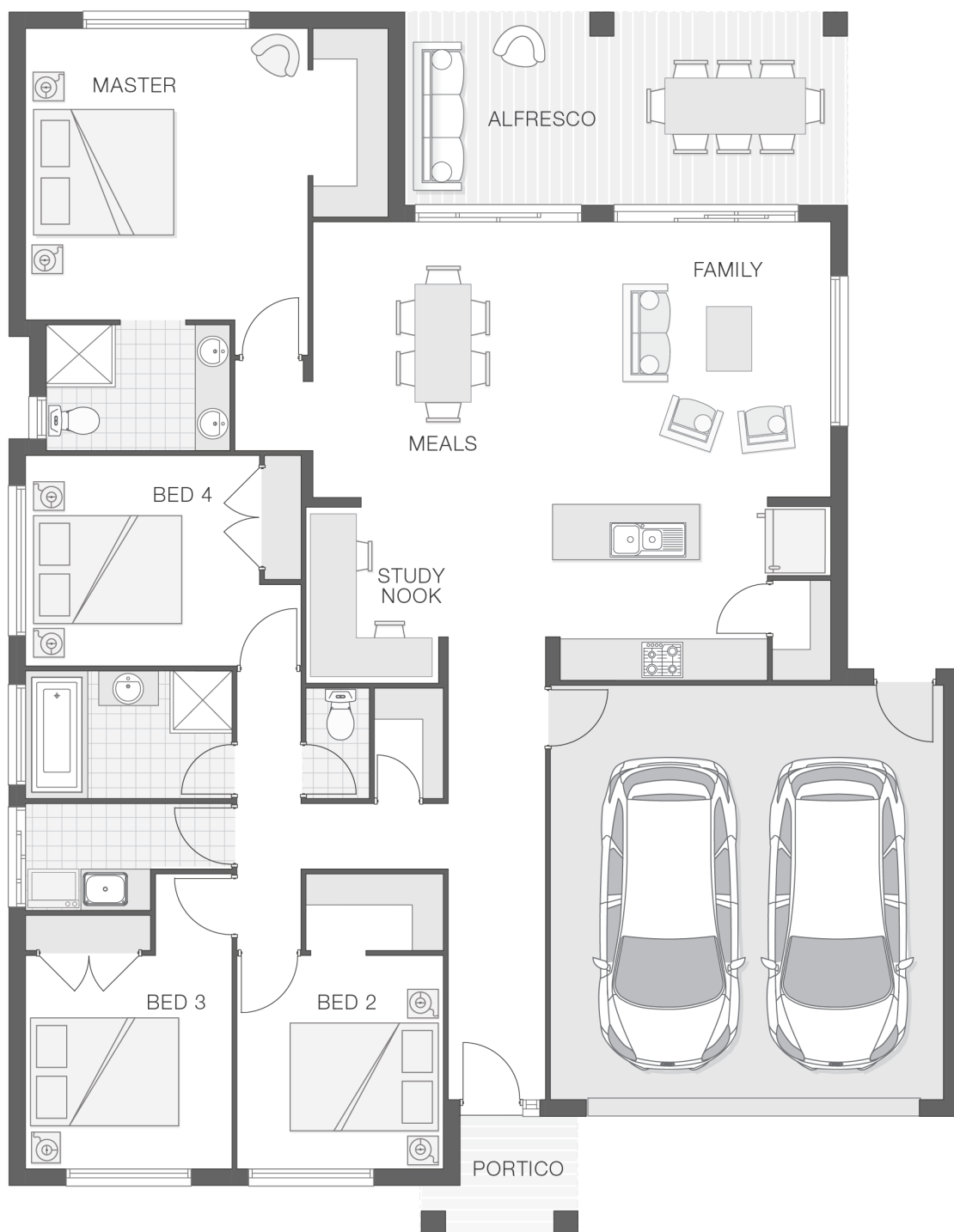
Plans and designs depicted may change with facade selection. All drawings and photographs are for illustrative purposes only. This work is exclusively owned by AB Aust. IP Pty Ltd (ACN 163 575 077) and cannot be reproduced or copied wholly or in part, in any form without permission of AB Aust. IP Pty Ltd. Any prices in this document include GST, are subject to change without notice, relate only to the base house price and standard inclusions. Site costs will vary depending on site conditions, local Council requirements, estate guidelines and any other statutory requirements applicable. Adenbrook Homes does not have a hold on the block, this package is subject to land availability and you securing the land through the land agent directly. For more information please speak to one of our friendly New Home Consultants.

### House Features:

- ✓ 20mm stone benchtops to kitchen
- ✓ 900mm Cooker and Dishwasher
- ✓ Quality Timber Look Flooring, Carpet and Tiles
- ✓ Brushed Concrete Driveway
- ✓ Concrete Alfresco and Portico areas
- ✓ Dishwasher
- ✓ Flyscreens
- ✓ BAL (Bushfire Attack Level) Allowance
- ✓ Letterbox and Clothesline
- ✓ Remote Controlled Garage Door + 2 remotes
- ✓ Site works allowance
- ✓ 1200mm Hinged Wideline Aluminium Entry Door
- ✓ 2570mm high ceilings
- ✓ Ultimate upgrade bundle

### Estate Features:

- ✓ Large block sizes
- ✓ Serene leafy outlook
- ✓ Close to schools
- ✓ Nearby Port Macquarie Hospital
- ✓ Easy access to Charles Sturt University
- ✓ Close to Innes Lake Shopping Village



### ENQUIRE NOW:

Angie Walford • P: 0429626412 • E: [portmacquarie.display@adenbrook.com.au](mailto:portmacquarie.display@adenbrook.com.au)

Plans and designs depicted may change with facade selection. All drawings and photographs are for illustrative purposes only. This work is exclusively owned by AB Aust. IP Pty Ltd (ACN 163 575 077) and cannot be reproduced or copied wholly or in part, in any form without permission of AB Aust. IP Pty Ltd. Any prices in this document include GST, are subject to change without notice, relate only to the base house price and standard inclusions. Site costs will vary depending on site conditions, local Council requirements, estate guidelines and any other statutory requirements applicable. Adenbrook Homes does not have a hold on the block, this package is subject to land availability and you securing the land through the land agent directly. For more information please speak to one of our friendly New Home Consultants.