

## The Isla - B

4 2 2 25 sq

Facade name: Haven

### House Plan:



### LOT #347

Innes Lake Estate

Address: Koel Crescent, Port Macquarie, 2444



951.5 m<sup>2</sup>

House and land package price:

From **\$613,900\***

### About package:

An entertainers dream! Huge Block with focus on lifestyle and space.

Huge 951sqm block of land with stunning open treed outlook behind. Only 2 neighbours! When built the Isla Opt B design will have full views of the huge back yard from the full length alfresco with open plan kitchen, meals and family area. The separate media lounge creates multiple living zones and a summer and winter living option. The yard has a huge area for a pool, trampoline, caravan and shed. A truly rare opportunity in a very peaceful street.

Full turn key home package with all the features a modern family requires

- Full Turnkey home with Start with More inclusions
- You pick all the colour and selections for the home with an accredited interior designer
- Gourmet kitchen with island bench, engineered stone benchtops, 900mm upright cooker and WIP
- 2570mm high ceilings
- LED downlights and Basix Package
- Fully covered alfresco with concrete floor
- Timber look vinyl planking or tiles and carpet to bedrooms and media lounge
- Rainwater tank
- Bushfire requirements for BAL29
- Fencing and turfing allowances to complete the home
- Ultimate bundle upgrade

### ENQUIRE NOW:

Angie Walford • P: 0429626412 • E: portmacquarie.display@adenbrook.com.au

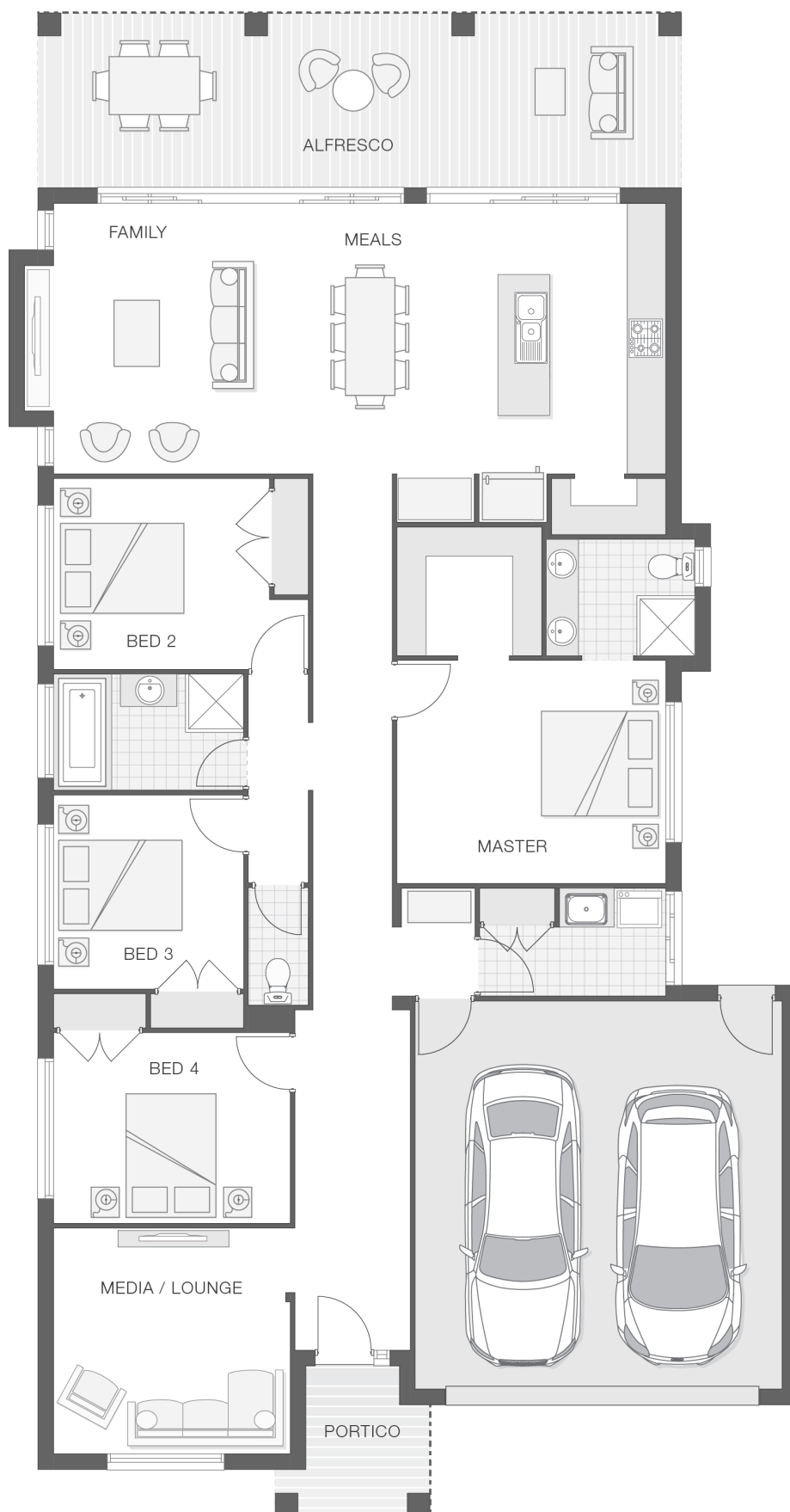
Plans and designs depicted may change with facade selection. All drawings and photographs are for illustrative purposes only. This work is exclusively owned by AB Aust. IP Pty Ltd (ACN 163 575 077) and cannot be reproduced or copied wholly or in part, in any form without permission of AB Aust. IP Pty Ltd. Any prices in this document include GST, are subject to change without notice, relate only to the base house price and standard inclusions. Site costs will vary depending on site conditions, local Council requirements, estate guidelines and any other statutory requirements applicable. Adenbrook Homes does not have a hold on the block, this package is subject to land availability and you securing the land through the land agent directly. For more information please speak to one of our friendly New Home Consultants.

### House Features:

- ✓ 20mm stone benchtops to kitchen
- ✓ 900mm Cooker and Dishwasher
- ✓ Quality Timber Look Flooring, Carpet and Tiles
- ✓ Site works allowance
- ✓ 1200mm Hinged Wideline Aluminium Entry Door
- ✓ Ultimate upgrade bundle
- ✓ 2570mm high ceilings
- ✓ Concrete Alfresco and Portico areas
- ✓ Flyscreens
- ✓ Letterbox and Clothesline
- ✓ Remote Controlled Garage Door + 2 remotes
- ✓ BAL (Bushfire Attack Level) Allowance
- ✓ Dishwasher
- ✓ Brushed Concrete Driveway

### Estate Features:

- ✓ Large block sizes
- ✓ Nearby Port Macquarie Hospital
- ✓ Serene leafy outlook
- ✓ Easy access to Charles Sturt University
- ✓ Close to schools
- ✓ Close to Innes Lake Shopping Village



### ENQUIRE NOW:

Angie Walford • P: 0429626412 • E: [portmacquarie.display@adenbrook.com.au](mailto:portmacquarie.display@adenbrook.com.au)

Plans and designs depicted may change with facade selection. All drawings and photographs are for illustrative purposes only. This work is exclusively owned by AB Aust. IP Pty Ltd (ACN 163 575 077) and cannot be reproduced or copied wholly or in part, in any form without permission of AB Aust. IP Pty Ltd. Any prices in this document include GST, are subject to change without notice, relate only to the base house price and standard inclusions. Site costs will vary depending on site conditions, local Council requirements, estate guidelines and any other statutory requirements applicable. Adenbrook Homes does not have a hold on the block, this package is subject to land availability and you securing the land through the land agent directly. For more information please speak to one of our friendly New Home Consultants.