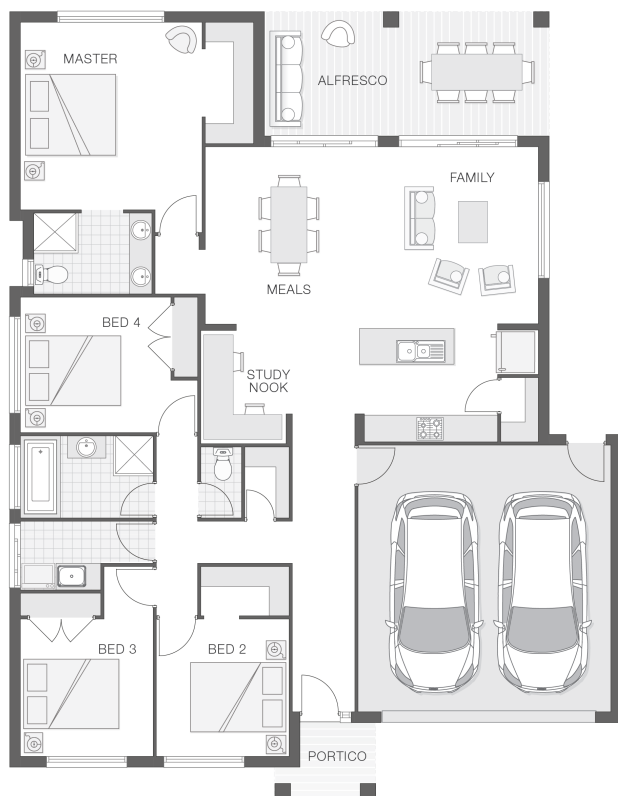


# The Chelsea

4 2 2 23 sq

Facade name: Haven

## House Plan:



## LOT #311

Redbank Estate

Address: Arthur Phillip Drive, North Richmond, 2754



648 m<sup>2</sup>

House and land package price:

From **\$883,289\***

## About package:

Adenbrook Homes Hawksbury and Blue Mountains specialise in custom, high quality built homes. We offer turn-key pricing, designed to give you everything you need to move straight in - without the hidden costs.

The Chelsea home design is modern, practical and versatile. A real family home, the Chelsea features a central living zone with kitchen, meals and family room overlooking alfresco area with a convenient study nook, making homework a breeze. The master retreat is complete with ensuite and walk-in-robe and is privately tucked away at the rear of the home. The additional bedrooms are all generous in size and are separate from the main living zones offering good separation and privacy.

### Ultimate Bundle Upgrade

- 20mm stone benchtops to kitchen
- BAL (Bushfire Attack Level) Allowance
- Quality Timber Look Flooring, Carpet and Tiles
- 900mm Cooker and Dishwasher
- Rainwater Tank Letterbox and Clothesline
- Concrete Alfresco and Portico areas
- Brushed Concrete Driveway
- Flyscreens
- Remote Controlled Garage Door + 2 remotes
- Site works allowance
- 2570mm high ceilings
- Hume Savoy 1200 hinged entry door

## ENQUIRE NOW:

Paul James • P: 0418656366 • E: paul.james@adenbrook.com.au

Images depicted on this site are for illustration purposes only. Facades and other images of homes and land estates may include optional upgrades, additional fixtures, finishes and home or estate features that are not included in the base price of the home or land package such as landscaping, feature tiling, decking, furnishing, feature lighting, pools, etc. Land estate pricing and plans are subject to developer guidelines and may vary at any time.

Powered by iBuildNew

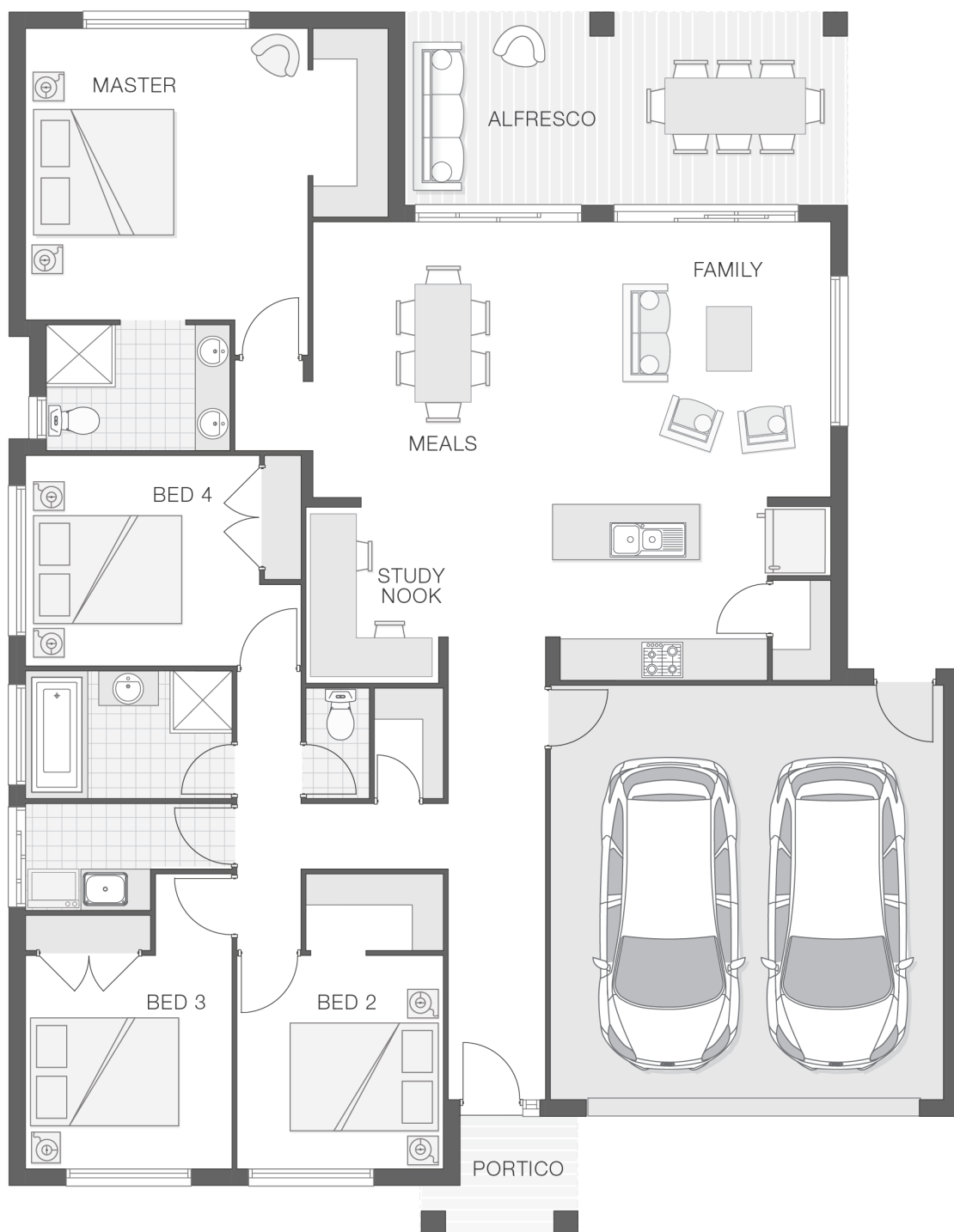
REF: IADENHL494377

## House Features:

- ✓ Solar Power
- ✓ Ducted Air Conditioning
- ✓ Stone Benchtops to Kitchen and Bathrooms\*
- ✓ Ultimate Bundle
- ✓ Colourbond Roof
- ✓ Double GPO's Throughout
- ✓ Stainless Steel Appliances
- ✓ Basix
- ✓ Floor Coverings
- ✓ 2590mm High Ceilings

## Estate Features:

- ✓ St Monica's Primary School – 6.1km – 10 mins
- ✓ Richmond high School – 5.2km – 8 mins
- ✓ University of Western Sydney - Hawkesbury campus – 7.0km – 11 mins
- ✓ Western Sydney Institute of TAFE – 7.4km – 12 mins
- ✓ St Matthews Primary School – 11.6km – 16 mins
- ✓ St Francis of Assisi Primary – 23.4km – 29 mins
- ✓ Richard Johnson Anglican School – 24.9km – 31 mins
- ✓ Rouse Hill Anglican College – 25.2km – 32 mins
- ✓ St Clare's Catholic High School – 24.7km – 30 mins
- ✓ Richmond Train Station – 5.0km – 8 mins
- ✓ East Richmond Train Station – 6.0km – 11 mins
- ✓ Clarendon Train Station – 8.7km – 13 mins
- ✓ Windsor Train Station – 11.4km – 16 mins
- ✓ Hawkesbury Hospital – 11.6km – 18 mins
- ✓ Nepean Hospital – 23.4km – 28 mins
- ✓ North Richmond Village Shopping Centre – 1.5km – 2 mins
- ✓ Richmond Marketplace – 5.1km – 8 mins
- ✓ Future Sydney Business Park 20.3km – 19 mins • IKEA, Bunnings, Costco



## ENQUIRE NOW:

Paul James • P: 0418656366 • E: paul.james@adenbrook.com.au

Images depicted on this site are for illustration purposes only. Facades and other images of homes and land estates may include optional upgrades, additional fixtures, finishes and home or estate features that are not included in the base price of the home or land package such as landscaping, feature tiling, decking, furnishing, feature lighting, pools, etc. Land estate pricing and plans are subject to developer guidelines and may vary at any time.