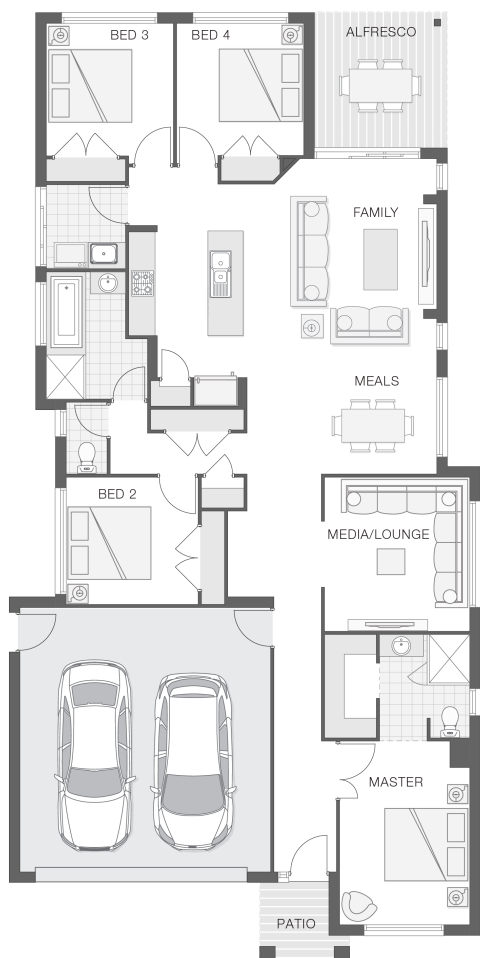


The Saxon - A

4 2 2 22 sq

Facade name: Byron

House Plan:



LOT #311

Redbank Estate

Address: Arthur Phillip Drive, North Richmond, 2754



648 m²

House and land package price:

From **\$845,906***

About package:

Arthur Phillip Drive, North Richmond

Located in a great position this 648 square metre parcel of land with home features water views with playing fields, playgrounds, walking trails right at your doorstep.

The Saxon A home design achieves the perfect balance between compact living and functionality. The clever design incorporates a central hub for entertaining both indoors and out with the tidy alfresco area adjoining the kitchen, family room and meals zones. A touch of luxury is added through the separate media or lounge room while all bedrooms are well-appointed to allow separation and privacy. The master retreat includes an ensuite and walk-in-robe to round out a convenient and punchy design.

Inclusions:

ULTIMATE BUNDLE

- 20mm stone benchtops to kitchen, ensuite and main bathroom vanities
- Quality timber look flooring, carpet and tiles
- Concrete and tiles to alfresco and portico
- 2590mm high ceilings
- Ducted air conditioning
- Corinthian 1020mm Madison entry door
- ...PLUS MUCH MORE!

Call your local builder Paul on 0418 656 366 to discuss your next build.

ENQUIRE NOW:

Paul James • P: 0418 656 366 • E: hawkesbury.bluemountains@adenbrook.com.au

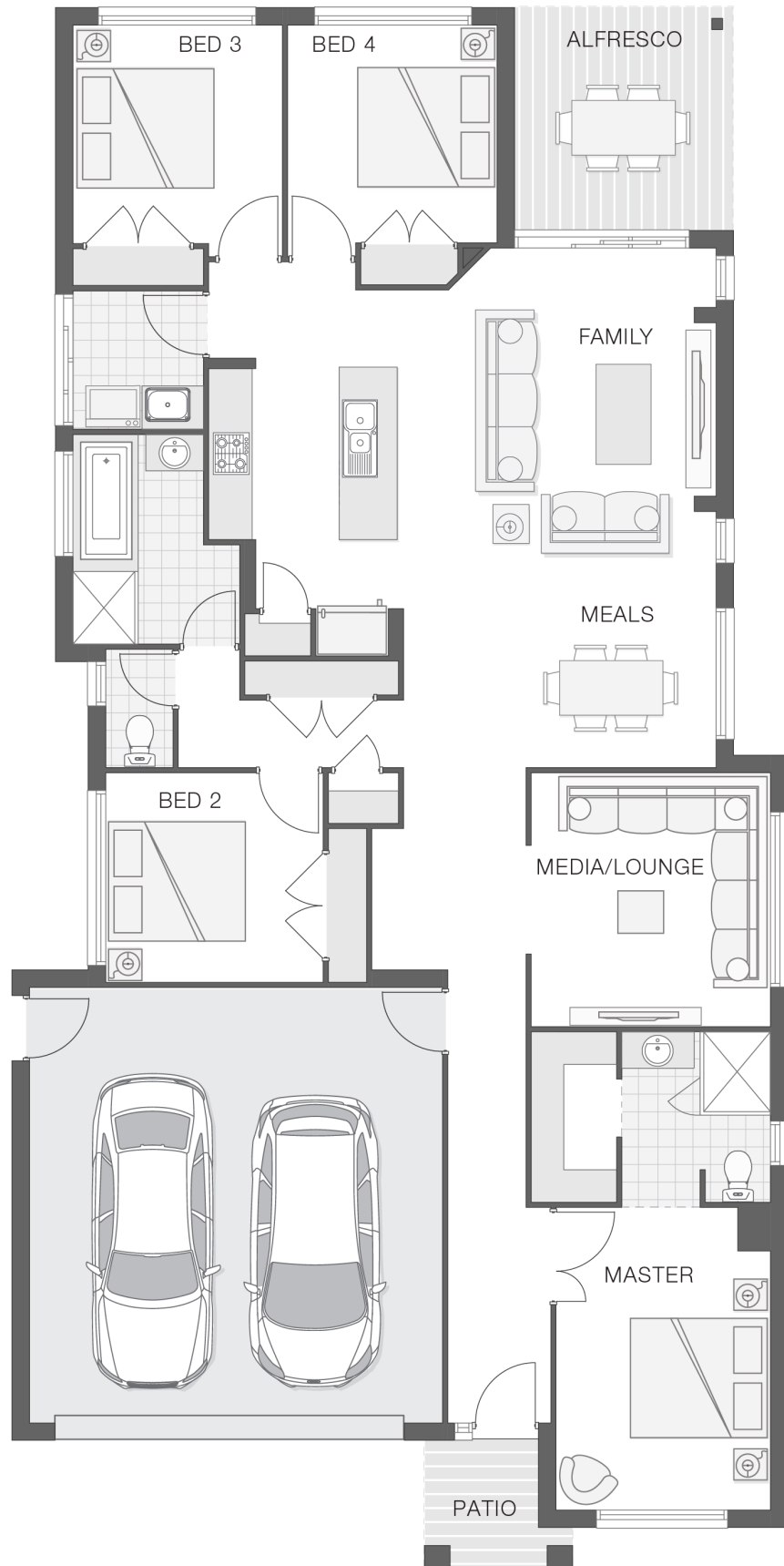
Images depicted on this site are for illustration purposes only. Facades and other images of homes and land estates may include optional upgrades, additional fixtures, finishes and home or estate features that are not included in the base price of the home or land package such as landscaping, feature tiling, decking, furnishing, feature lighting, pools, etc. Land estate pricing and plans are subject to developer guidelines and may vary at any time.

House Features:

- ✓ Ducted Air Conditioning
- ✓ Stone Benchtops to Kitchen and Bathrooms*
- ✓ Shower Niches to Ensuite & Bathroom
- ✓ Covered Concrete & Tiled Alfresco area
- ✓ Soft Close Drawers & Doors
- ✓ 1020mm wide Feature Front Entry Door
- ✓ Ultimate Bundle
- ✓ Colourbond Roof
- ✓ Double GPO's Throughout
- ✓ Stainless Steel Appliances
- ✓ Basix
- ✓ 3 Phase Underground Power
- ✓ Floor Coverings
- ✓ 2590mm High Ceilings
- ✓ All connections & services
- ✓ Flyscreens
- ✓ Termite Barrier Protection
- ✓ Concrete Driveway - 45m² Allowance

Estate Features:

- ✓ St Monica's Primary School – 6.1km – 10 mins
- ✓ Richmond high School – 5.2km – 8 mins
- ✓ University of Western Sydney - Hawkesbury campus – 7.0km – 11 mins
- ✓ Western Sydney Institute of TAFE – 7.4km – 12 mins
- ✓ St Matthews Primary School – 11.6km – 16 mins
- ✓ St Francis of Assisi Primary - 23.4km – 29 mins
- ✓ Richmond Train Station – 5.0km – 8 mins
- ✓ Hawkesbury Hospital – 11.6km – 18 mins
- ✓ North Richmond Village Shopping Centre – 1.5km – 2 mins
- ✓ Richmond Marketplace – 5.1km – 8 mins
- ✓ Future Sydney Business Park 20.3km – 19 mins • IKEA, Bunnings, Costco
- ✓ East Richmond Train Station – 6.0km – 11 mins



ENQUIRE NOW:

Paul James • P: 0418 656 366 • E: hawkesbury.bluemountains@adenbrook.com.au

adenbrook
homes

Images depicted on this site are for illustration purposes only. Facades and other images of homes and land estates may include optional upgrades, additional fixtures, finishes and home or estate features that are not included in the base price of the home or land package such as landscaping, feature tiling, decking, furnishing, feature lighting, pools, etc. Land estate pricing and plans are subject to developer guidelines and may vary at any time.