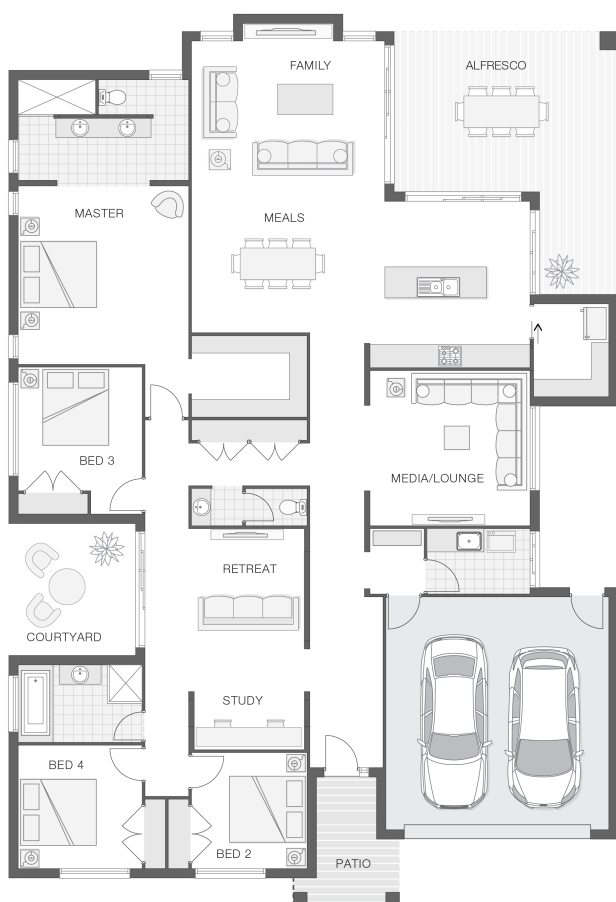


## The Penn

4 2 2 34 sq

Facade name: Byron

### House Plan:



### LOT #5

Wheeny Creek - Cattai

Address: 16 Wheeny Creek Road, Cattai, 2756



6878 m<sup>2</sup>

House and land package price:

From **\$1,244,876\***

### About package:

Lot 5, Wheeny Creek Road, Cattai

Set in a boutique 5 block sub-division this rural setting provides both open space and gorgeous natural tree areas. Close to the prestigious Riverside Golf Course and just 18 minutes away from Rouse Hill Town Centre, get the best of both worlds with this great package.

The Penn home design is functional and fashionable and provides a clever layout conducive for family living, relaxing and entertaining. You will feel completely immersed in the outdoors in this home, whether it be as you entertain in the wrap around alfresco area that flows directly into the open plan living space or relaxing in the family retreat overlooking the outdoor courtyard area. The master retreat is the ideal parent's haven with dual vanity, oversized walk-in-robe and great separation from the remaining bedrooms and living spaces.

Need a pool, shed or granny flat as well? Call to discuss how we can incorporate these within your build time.

Call your local builder Paul on 0418 656 366 to discuss your next build.

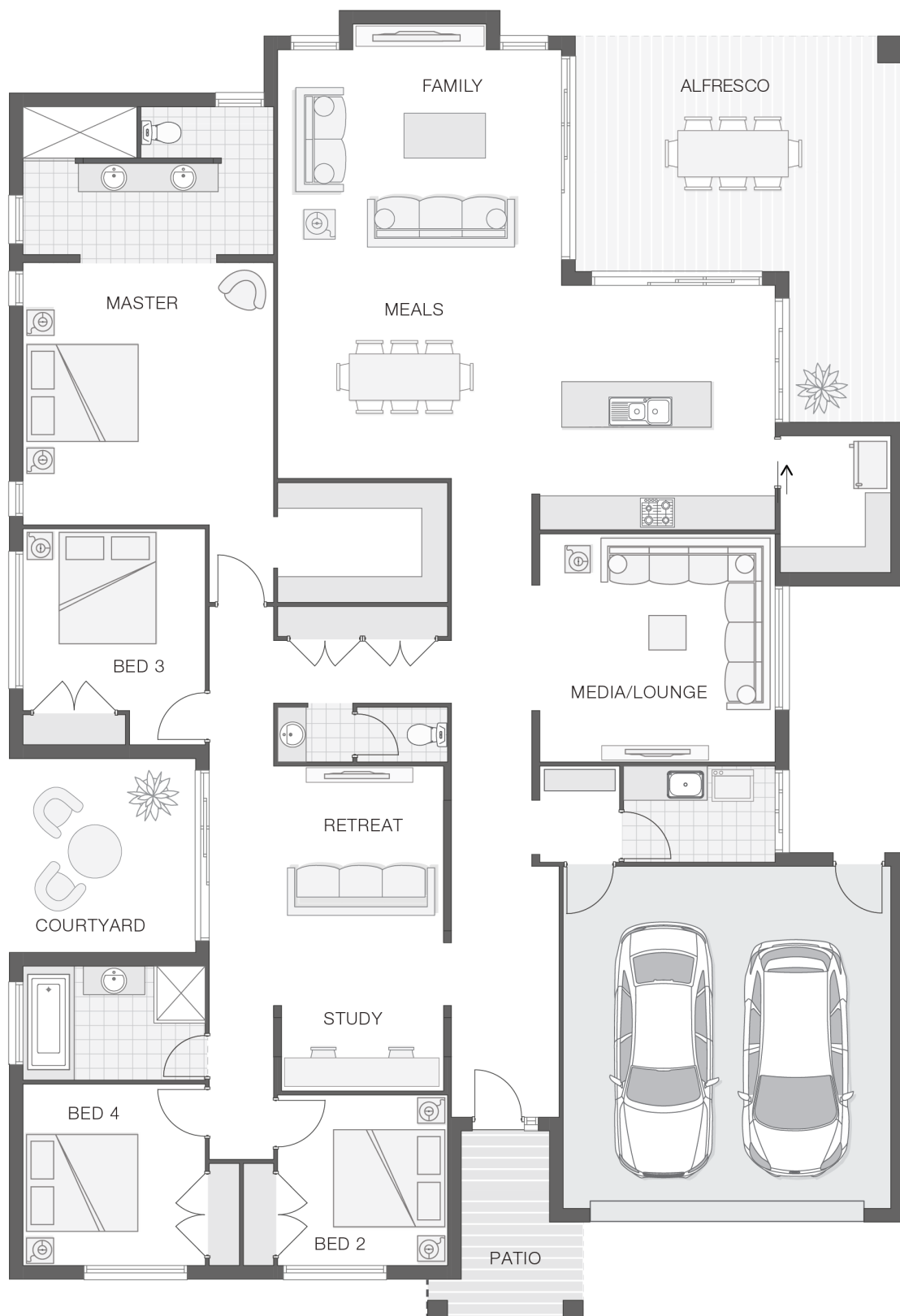
### ENQUIRE NOW:

Paul James • P: 0418 656 366 • E: [hawkesbury.bluemountains@adenbrook.com.au](mailto:hawkesbury.bluemountains@adenbrook.com.au)

Images depicted on this site are for illustration purposes only. Facades and other images of homes and land estates may include optional upgrades, additional fixtures, finishes and home or estate features that are not included in the base price of the home or land package such as landscaping, feature tiling, decking, furnishing, feature lighting, pools, etc. Land estate pricing and plans are subject to developer guidelines and may vary at any time.

## House Features:

- ✓ Ducted Air Conditioning
- ✓ Stone Benchtops to Kitchen and Bathrooms\*
- ✓ 120,000L Water Tank
- ✓ Shower Niches to Ensuite & Bathroom
- ✓ Covered Concrete & Tiled Alfresco area
- ✓ Ultimate Bundle
- ✓ Colourbond Roof
- ✓ Double GPO's Throughout
- ✓ Stainless Steel Appliances
- ✓ Basix
- ✓ 3 Phase Underground Power
- ✓ Envirocycle System
- ✓ 1020mm wide Feature Front Entry Door
- ✓ Soft Close Drawers & Doors
- ✓ Concrete Driveway - 80m<sup>2</sup> Allowance
- ✓ Floor Coverings
- ✓ 2590mm High Ceilings
- ✓ All connections & services
- ✓ Flyscreens
- ✓ Termite Barrier Protection
- ✓ Premium Landscape Pack to the value of \$10,000
- ✓ Plantation Shutters to front of house



## ENQUIRE NOW:

Paul James • P: 0418 656 366 • E: [hawkesbury.bluemountains@adenbrook.com.au](mailto:hawkesbury.bluemountains@adenbrook.com.au)

adenbrook  
homes

Images depicted on this site are for illustration purposes only. Facades and other images of homes and land estates may include optional upgrades, additional fixtures, finishes and home or estate features that are not included in the base price of the home or land package such as landscaping, feature tiling, decking, furnishing, feature lighting, pools, etc. Land estate pricing and plans are subject to developer guidelines and may vary at any time.