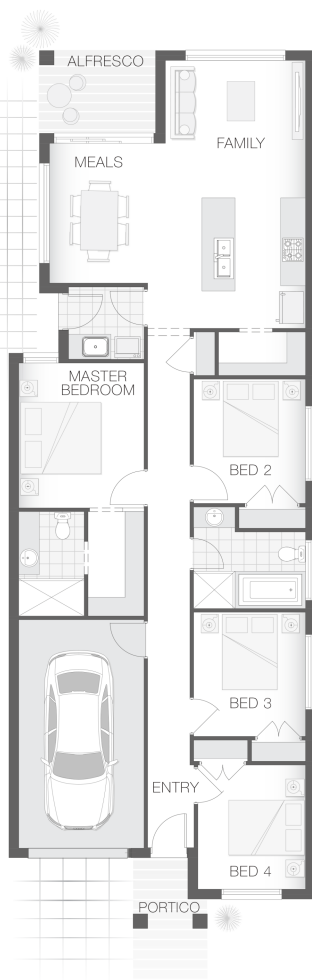


The Phoenix

4 2 1 16 sq

Facade name: Pallara

House Plan:



LOT #18

Waratah Estate Austral

Address: Austral, 2179



285 m²

House and land package price:

From **\$621,900***

About package:

Adenbrook Homes South West Sydney are a locally owned and operated builder, backed by an award-winning franchise. We offer this amazing house and land package.

The Phoenix A design is contemporary and intended to accommodate a small lot, yet still deliver on space. Austral, will offer plenty of room for the family. The open plan design lends to interactive family living, dining and alfresco entertaining space. This home offers the best in style and comfort for the smaller family.

*Please note this package is not eligible for the 25k Home Builders Scheme. Land Registers 2021

What's included in your Adenbrook Home:

- Site Specific Site Costs and Standard BAL Allowance
- Builders range tiles & carpet throughout home
- Tiling to the Alfresco and Portico
- Coloured Concrete Driveway
- Basix Requirements
- Our amazing Ultimate Bundle

Contact us today to find out how we can help you create your dream house and land package. You can also view our Orion and Sapphire designs on display at 6 Coral Circuit, Leppington - contact our team to book your inspection today.

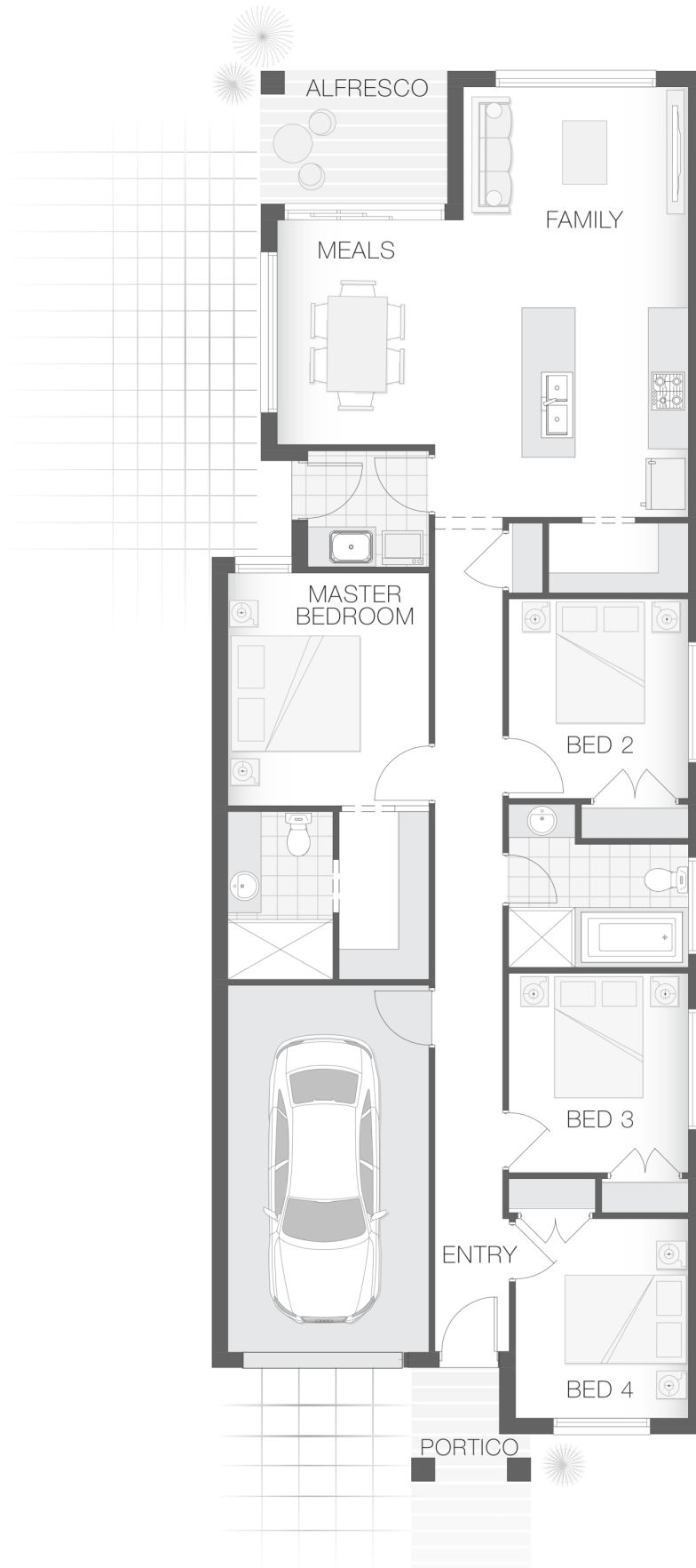
ENQUIRE NOW:

Matthew Micallef • P: 0406 248 064 • E: sydneywest.southwest@adenbrook.com.au

Images depicted on this site are for illustration purposes only. Facades and other images of homes and land estates may include optional upgrades, additional fixtures, finishes and home or estate features that are not included in the base price of the home or land package such as landscaping, feature tiling, decking, furnishing, feature lighting, pools, etc. Land estate pricing and plans are subject to developer guidelines and may vary at any time.

House Features:

- ✓ Tiling to the Alfresco and Portico
- ✓ 1020mm Entry Door
- ✓ Standard Site Costs and Standard Basix Requirements
- ✓ Coloured Concrete Driveway
- ✓ 20mm Stone benchtop to the kitchen, bathroom and Ensuite.
- ✓ Shower Niches
- ✓ Soft-close drawers and doors to Kitchen and Bathrooms
- ✓ Builders range tiles & carpet throughout home
- ✓ Westinghouse Cooktop, Oven and Dishwasher
- ✓ 2x Gas Points
- ✓ Flyscreens To all openable windows
- ✓ Much More...



ENQUIRE NOW:

Matthew Micallef • P: 0406 248 064 • E: sydneywest.southwest@adenbrook.com.au

Images depicted on this site are for illustration purposes only. Facades and other images of homes and land estates may include optional upgrades, additional fixtures, finishes and home or estate features that are not included in the base price of the home or land package such as landscaping, feature tiling, decking, furnishing, feature lighting, pools, etc. Land estate pricing and plans are subject to developer guidelines and may vary at any time.