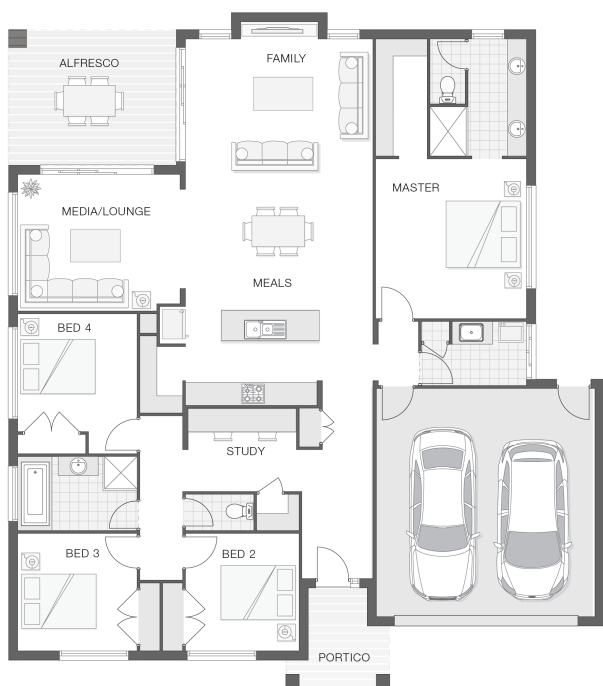


## The Austin - A

4 2 2 26 sq

Facade name: Lacie

### House Plan:



### LOT #15

Riverside Estate

Address: Ondaroo Crescent, Old Bar, 2430



750 m<sup>2</sup>

House and land package price:

From **\$571,810\***

### About package:

#### FIXED TURN-KEY PRICE

Adenbrook Homes Mid North Coast are a locally owned and operated builder, backed by an award winning franchise. We offer turn-key pricing, designed to give you everything you need to move straight in - without the hidden costs.

At the Austin, modern family living is all about space to come together as a family and space for quiet time apart. The open living space combines with a rumpus room and alfresco to create a central living and entertaining area that can be used all year round. The master suite is isolated at the rear of the home for privacy while the bedroom wing at the front of the home has a generous study nook for dedicated work-space. The Austin has all the elements today's family needs and a little more when paired with this generous 750m<sup>2</sup> block in Riverside Estate, Old Bar.

### ENQUIRE NOW:

Kristen Curry • P: 0401091313 • E: [portmacquarie.display@adenbrook.com.au](mailto:portmacquarie.display@adenbrook.com.au)

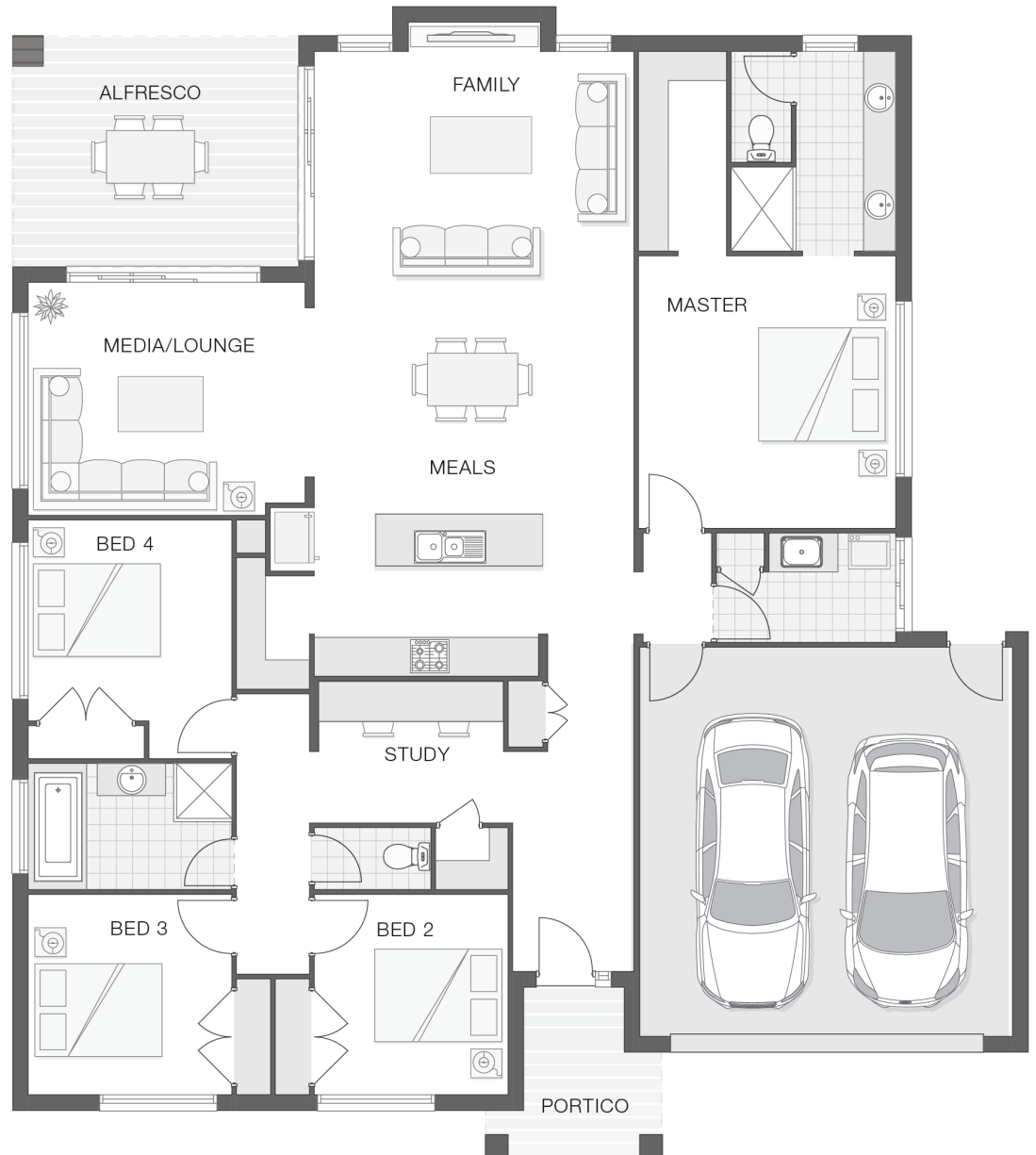
Plans and designs depicted may change with facade selection. All drawings and photographs are for illustrative purposes only. This work is exclusively owned by AB Aust. IP Pty Ltd (ACN 163 575 077) and cannot be reproduced or copied wholly or in part, in any form without permission of AB Aust. IP Pty Ltd. Any prices in this document include GST, are subject to change without notice, relate only to the base house price and standard inclusions. Site costs will vary depending on site conditions, local Council requirements, estate guidelines and any other statutory requirements applicable. Adenbrook Homes does not have a hold on the block, this package is subject to land availability and you securing the land through the land agent directly. For more information please speak to one of our friendly New Home Consultants.

### House Features:

- ✓ 20mm stone benchtops to kitchen
- ✓ 900mm Cooker and Dishwasher
- ✓ 3000L rainwater tank with submersible pump
- ✓ Quality Timber Look Flooring, Carpet and Tiles
- ✓ Brushed Concrete Driveway
- ✓ Concrete Alfresco and Portico areas
- ✓ Dishwasher
- ✓ Flyscreens
- ✓ BAL (Bushfire Attack Level) Allowance
- ✓ Letterbox and Clothesline
- ✓ Remote Controlled Garage Door + 2 remotes
- ✓ Site works allowance
- ✓ 1200mm Hinged Wideline Aluminium Entry Door
- ✓ 2570mm high ceilings

### Estate Features:

- ✓ Minutes from Old Bar beach
- ✓ Close to town center
- ✓ Relaxed and friendly coastal village



### ENQUIRE NOW:

Kristen Curry • P: 0401091313 • E: [portmacquarie.display@adenbrook.com.au](mailto:portmacquarie.display@adenbrook.com.au)

Plans and designs depicted may change with facade selection. All drawings and photographs are for illustrative purposes only. This work is exclusively owned by AB Aust. IP Pty Ltd (ACN 163 575 077) and cannot be reproduced or copied wholly or in part, in any form without permission of AB Aust. IP Pty Ltd. Any prices in this document include GST, are subject to change without notice, relate only to the base house price and standard inclusions. Site costs will vary depending on site conditions, local Council requirements, estate guidelines and any other statutory requirements applicable. Adenbrook Homes does not have a hold on the block, this package is subject to land availability and you securing the land through the land agent directly. For more information please speak to one of our friendly New Home Consultants.