



House Plan:



LOT #15

Chapel Hill

Address: Tamarix Street, Chapel Hill (Qld), 4069



645 m²

The Sinclair

Package Price From

4 2 2 33 sq

\$884,162*

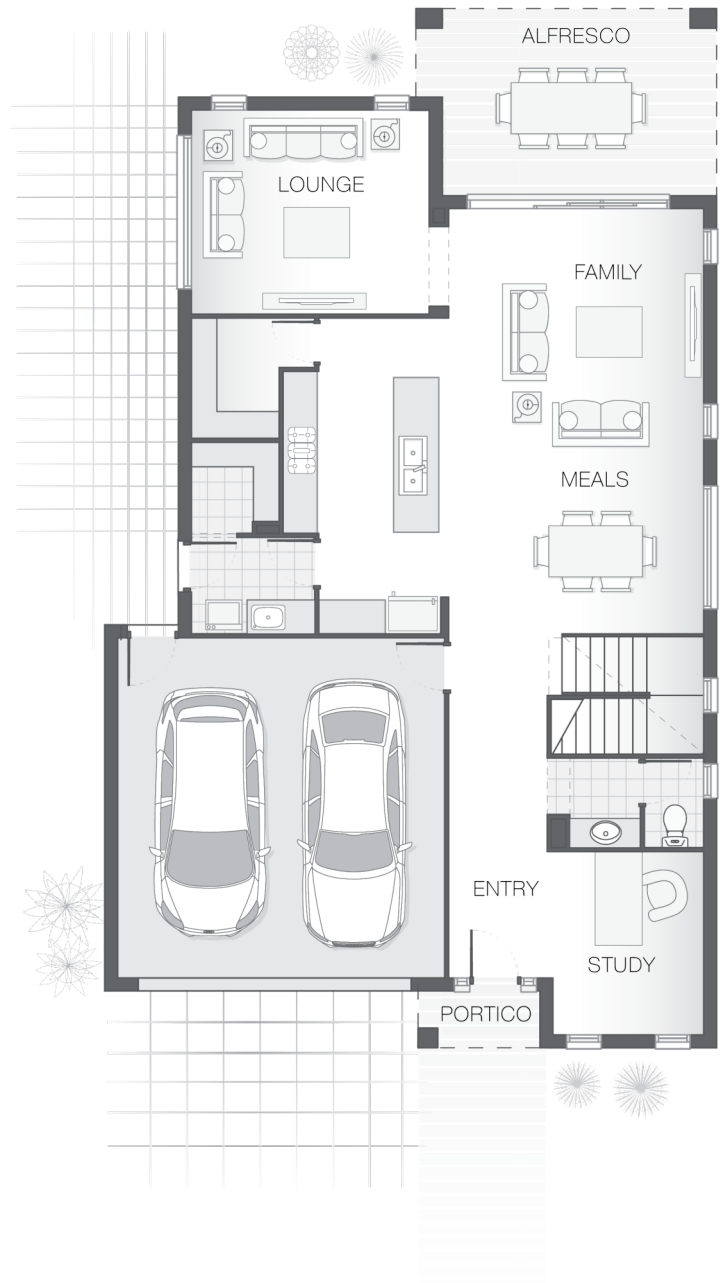
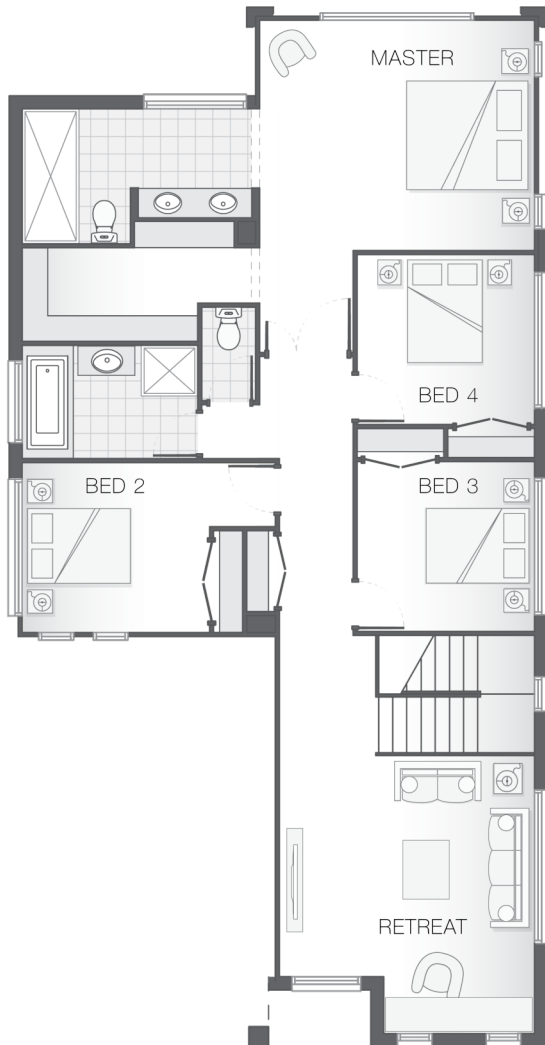
About package:

The Sinclair home design is cleverly compact offering an abundance of space and features suitable for a smaller lot. The intuitive design effortlessly combines the alfresco area with the indoor entertaining and living spaces creating a feeling of spaciousness while the study and the powder room deliver a feeling of stylishness and luxury. The upper floor doesn't disappoint with a well-appointed master retreat with ensuite and walk-in-robe, while also allowing adequate space for additional bedrooms and a generous retreat space ensuring the compact design caters to the entire family.

ENQUIRE NOW:

Brendan Wekeem • P: 0400 901 485 • E: brisbane.display@adenbrook.com.au

Images depicted on this site are for illustration purposes only. Facades and other images of homes and land estates may include optional upgrades, additional fixtures, finishes and home or estate features that are not included in the base price of the home or land package such as landscaping, feature tiling, decking, furnishing, feature lighting, pools, etc. Land estate pricing and plans are subject to developer guidelines and may vary at any time.



ENQUIRE NOW:

Brendan Wekeem • P: 0400 901 485 • E: brisbane.display@adenbrook.com.au

Images depicted on this site are for illustration purposes only. Facades and other images of homes and land estates may include optional upgrades, additional fixtures, finishes and home or estate features that are not included in the base price of the home or land package such as landscaping, feature tiling, decking, furnishing, feature lighting, pools, etc. Land estate pricing and plans are subject to developer guidelines and may vary at any time.