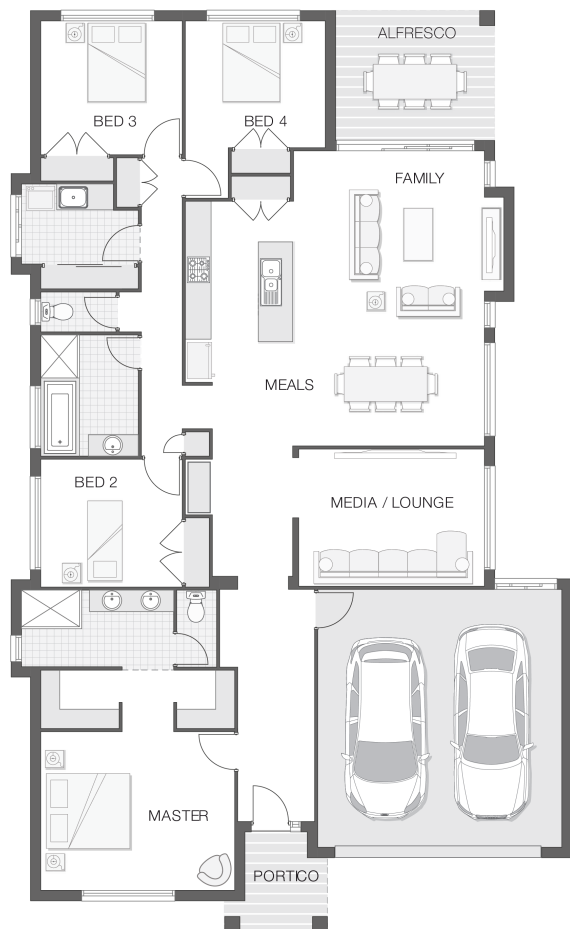


The Fraser - A

4 2 2 25 sq

Facade name: Penrose

House Plan:



LOT #58

Forster Grange

Address: Lovedale Way, Forster (NSW), 2428



851.1 m²

House and land package price:

From **\$787,985***

About package:

FIXED TURN-KEY PRICE

Adenbrook Homes Mid North Coast are a locally owned, award-winning builder, backed by the strength of a big brand. We offer turn-key pricing, designed to give you everything you need to move straight in - without the hidden costs.

The Fraser home design on this 851.1m2 block is both intelligent and practical in layout and features. The deliberate placement of separate living and entertainment zones allows space for a touch of luxury in the form of a secluded master retreat with ensuite and walk-in-robe, while indoor and outdoor living flows effortlessly throughout the home. With a media room and dedicated tech zone to store and recharge devices, this home has certainly been designed with the modern Australian family in mind.

- Enjoy this excellent coastal town only;
- Minutes from the beach
- Parks and lakes at your doorstep
- Stocklands Forster a short drive away
- Close to local CBD, cafes and grocery store
- Friendly Coastal community
- Easy access to highway

ENQUIRE NOW:

Kristen Curry • P: 0401091313 • E: portmacquarie.display@adenbrook.com.au

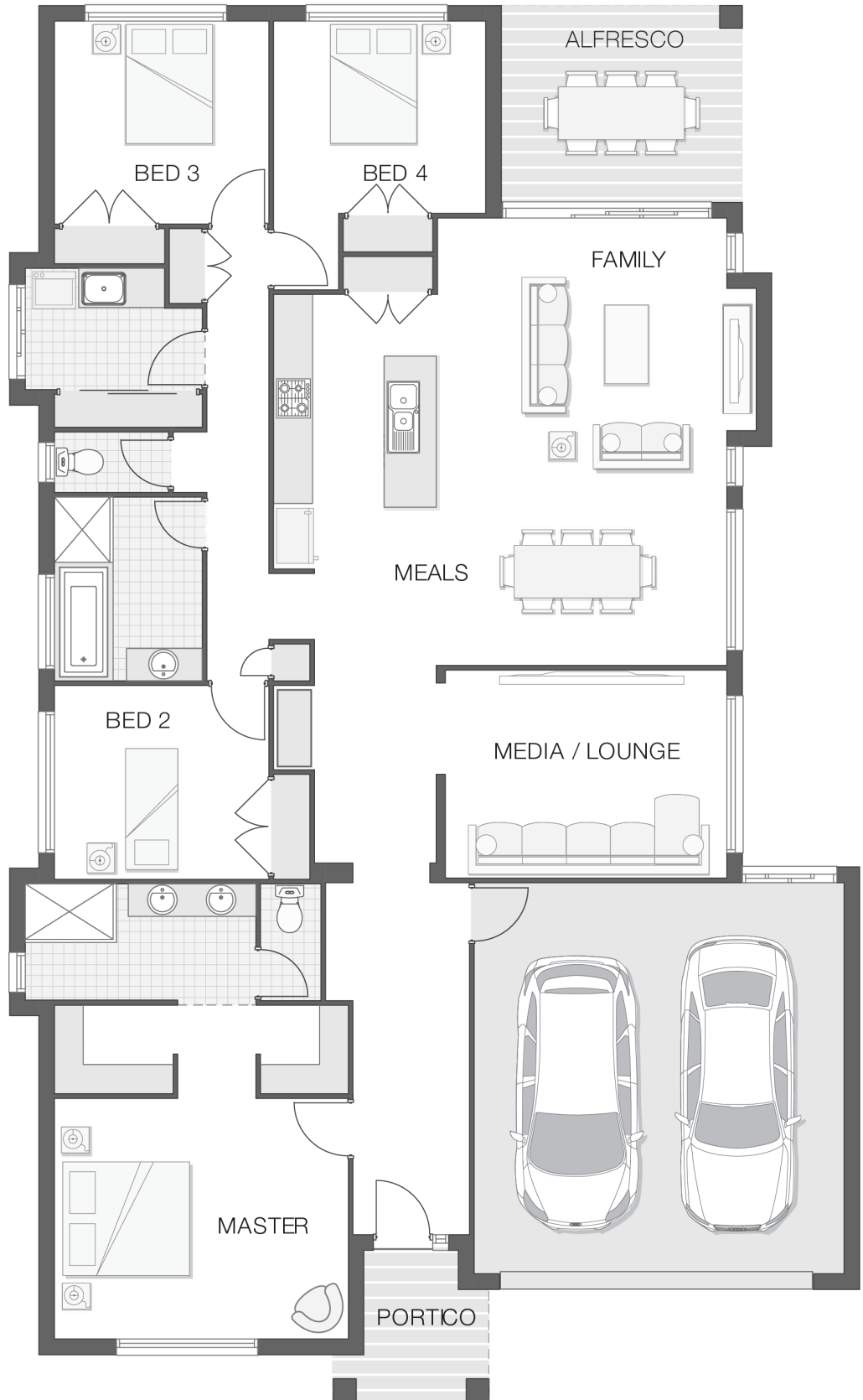
Plans and designs depicted may change with facade selection. All drawings and photographs are for illustrative purposes only. This work is exclusively owned by AB Aust. IP Pty Ltd (ACN 163 575 077) and cannot be reproduced or copied wholly or in part, in any form without permission of AB Aust. IP Pty Ltd. Any prices in this document include GST, are subject to change without notice, relate only to the base house price and standard inclusions. Site costs will vary depending on site conditions, local Council requirements, estate guidelines and any other statutory requirements applicable. Adenbrook Homes does not have a hold on the block, this package is subject to land availability and you securing the land through the land agent directly. For more information please speak to one of our friendly New Home Consultants.

House Features:

- ✓ 20mm stone benchtops to kitchen
- ✓ 900mm Cooker and Dishwasher
- ✓ Site works allowance
- ✓ 1200mm Hinged Wideline Aluminium Entry Door
- ✓ 2570mm high ceilings
- ✓ Quality Timber Look Flooring, Carpet and Tiles
- ✓ BAL (Bushfire Attack Level) Allowance
- ✓ Brushed Concrete Driveway
- ✓ Remote Controlled Garage Door + 2 remotes
- ✓ Letterbox and Clothesline
- ✓ Flyscreens
- ✓ Concrete Alfresco and Portico areas

Estate Features:

- ✓ Stocklands Forster just minutes away
- ✓ Close to beach and lakes
- ✓ Local school within walking distance
- ✓ 3 hours from Sydney



ENQUIRE NOW:

Kristen Curry • P: 0401091313 • E: portmacquarie.display@adenbrook.com.au

Plans and designs depicted may change with facade selection. All drawings and photographs are for illustrative purposes only. This work is exclusively owned by AB Aust. IP Pty Ltd (ACN 163 575 077) and cannot be reproduced or copied wholly or in part, in any form without permission of AB Aust. IP Pty Ltd. Any prices in this document include GST, are subject to change without notice, relate only to the base house price and standard inclusions. Site costs will vary depending on site conditions, local Council requirements, estate guidelines and any other statutory requirements applicable. Adenbrook Homes does not have a hold on the block, this package is subject to land availability and you securing the land through the land agent directly. For more information please speak to one of our friendly New Home Consultants.