



House Plan:

LOT #1103

Riverbank Estate

Address: New Road, Caboolture, 4510



400 m²

The Dawson

Package Price From

3

2

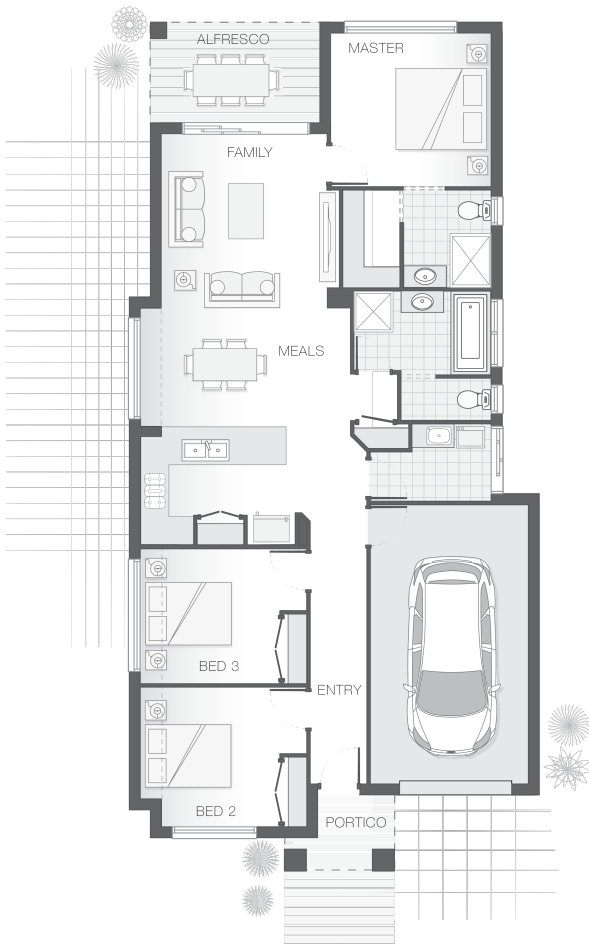
1

15 sq

\$379,059*

About package:

The Dawson home design is contemporary and intended to accommodate a small lot, yet still deliver on space, featuring a clever layout that is ideal for the growing family. The master retreat occupies the rear of the home alongside the alfresco dining space which flows through the open plan family, meals and kitchen zones then onto the additional bedrooms. The slim design ensures comfort while providing functionality for entertaining and family living.



ENQUIRE NOW:

Martin Donovan • P: 0456 624 304 • E: brisbane.display@adenbrook.com.au

Images depicted on this site are for illustration purposes only. Facades and other images of homes and land estates may include optional upgrades, additional fixtures, finishes and home or estate features that are not included in the base price of the home or land package such as landscaping, feature tiling, decking, furnishing, feature lighting, pools, etc. Land estate pricing and plans are subject to developer guidelines and may vary at any time.

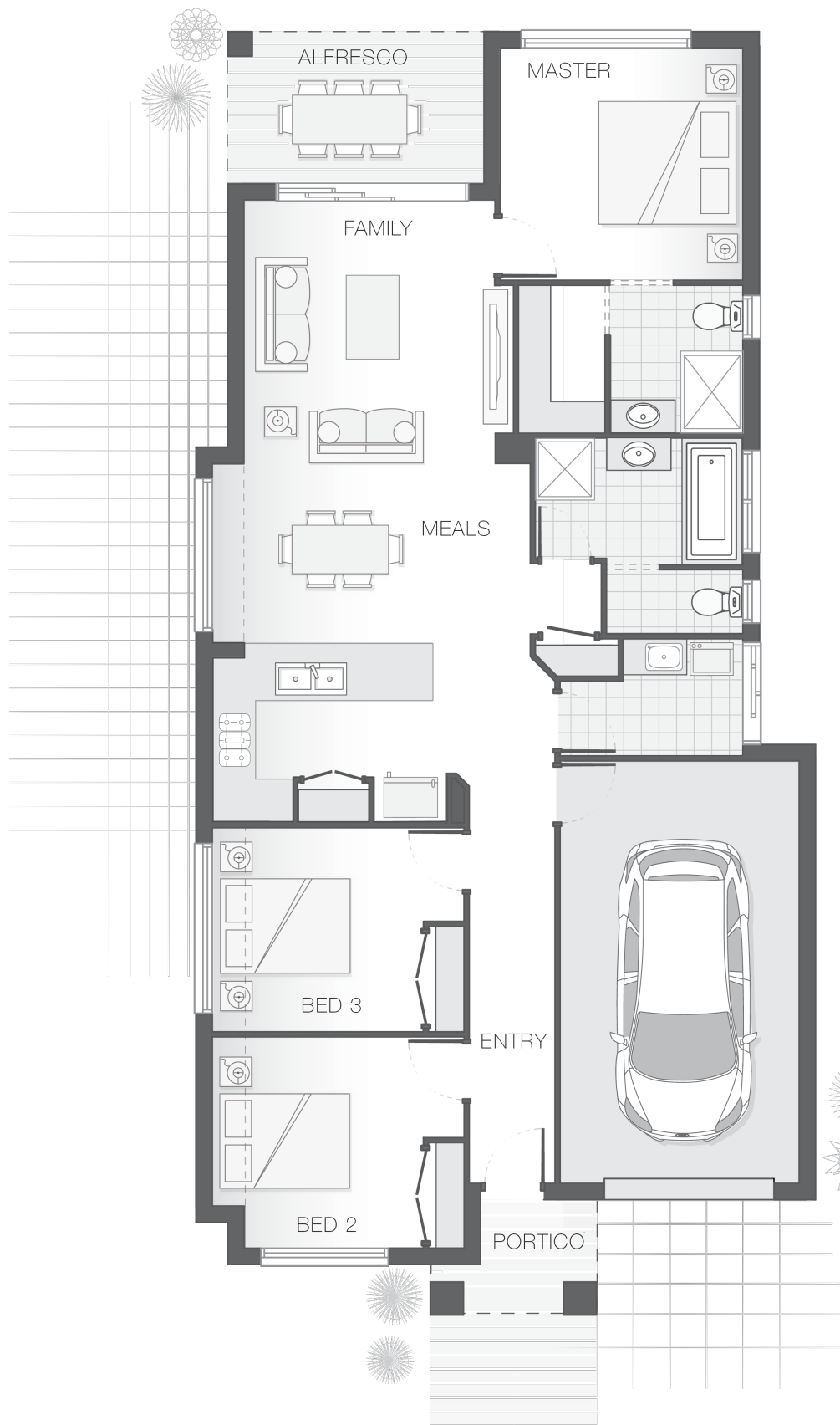
Powered by  iBuildNew

adenbrook
homes

REF: IADEQHL498808

House Features:

- ✓ Tiling and carpet throughout
- ✓ TV antenna and clothesline
- ✓ Brick and rendered letterbox
- ✓ Exposed aggregate driveway and path
- ✓ Tiling and integral slab to alfresco
- ✓ 1020mm entry door
- ✓ Monier Atura Low-profile roof tiles or Colorbond roof
- ✓ 2590mm ceiling height to lower level
- ✓ Flyscreens to windows
- ✓ LED downlights
- ✓ Cold water tap to fridge space
- ✓ 20mm stone benchtops to kitchen, ensuite and bathrooms
- ✓ Westinghouse stainless steel dishwasher
- ✓ Externally ducted rangehood
- ✓ Soft-close drawers to kitchen, ensuite and bathrooms
- ✓ Shower niche to ensuite & bathroom



ENQUIRE NOW:

Martin Donovan • P: 0456 624 304 • E: brisbane.display@adenbrook.com.au

Images depicted on this site are for illustration purposes only. Facades and other images of homes and land estates may include optional upgrades, additional fixtures, finishes and home or estate features that are not included in the base price of the home or land package such as landscaping, feature tiling, decking, furnishing, feature lighting, pools, etc. Land estate pricing and plans are subject to developer guidelines and may vary at any time.