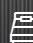
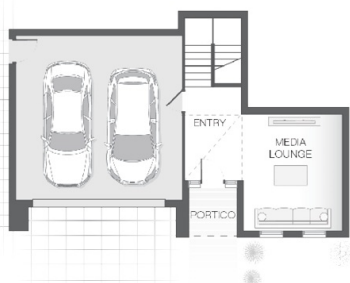


The Bella

 4  2  2  27 sq

Facade name: Benson

House Plan:



LOT #1009

Seascape

Address: Scarborough Circuit, Red Head, 2430



755.5 m²

House and land package price:

From **\$661,410***

About package:

FIXED TURN-KEY PRICE

Adenbrook Homes Mid North Coast are a locally owned, award-winning builder, backed by the strength of a big brand. We offer turn key pricing, designed to give you everything you need to move straight in - without the hidden costs.

The Bella home design when paired with this 755m² block in Seascape Village is efficiently and thoughtfully designed to suit a sloping block, maximising available space. With separate living zones there is plenty of space for entertaining in the open plan central zone including alfresco area, while maintaining privacy and peace in the master retreat. The Bella, like its namesake is a beautiful family home that will be certain to impress.

Limited Time Offer available from July 1, 2020 -Intensify Your Style with up to \$20,000* worth of designer upgrades at no additional cost. Choose from an exclusive range of stylish kitchen and bathroom upgrades that will provide the finishing touches to define your new home. Team this offer up with the \$25,000 HomeBuilder Scheme for eligible buyers and get your dream home for less! There has never been a better time to build your new home.

ENQUIRE NOW:

Kristen Curry • P: 0401091313 • E: portmacquarie.display@adenbrook.com.au

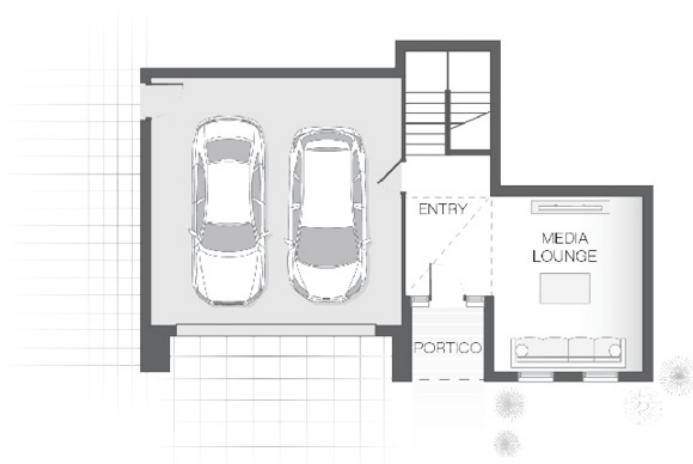
Plans and designs depicted may change with facade selection. All drawings and photographs are for illustrative purposes only. This work is exclusively owned by AB Aust. IP Pty Ltd (ACN 163 575 077) and cannot be reproduced or copied wholly or in part, in any form without permission of AB Aust. IP Pty Ltd. Any prices in this document include GST, are subject to change without notice, relate only to the base house price and standard inclusions. Site costs will vary depending on site conditions, local Council requirements, estate guidelines and any other statutory requirements applicable. Adenbrook Homes does not have a hold on the block, this package is subject to land availability and you securing the land through the land agent directly. For more information please speak to one of our friendly New Home Consultants.

House Features:

- ✓ 20mm stone benchtops to kitchen
- ✓ 900mm Cooker and Dishwasher
- ✓ Site works allowance
- ✓ 1200mm Hinged Wideline Aluminium Entry Door
- ✓ 2570mm high ceilings
- ✓ BAL (Bushfire Attack Level) Allowance
- ✓ Dishwasher
- ✓ Brushed Concrete Driveway
- ✓ Quality Timber Look Flooring, Carpet and Tiles
- ✓ Remote Controlled Garage Door + 2 remotes
- ✓ Letterbox and Clothesline
- ✓ Flyscreens
- ✓ Concrete Alfresco and Portico areas

Estate Features:

- ✓ Beautiful beachfront lifestyle
- ✓ 15 minutes from Forster
- ✓ Close to Diamond beach
- ✓ Minutes from local shops, schools and restaurants



ENQUIRE NOW:

Kristen Curry • P: 0401091313 • E: portmacquarie.display@adenbrook.com.au

Plans and designs depicted may change with facade selection. All drawings and photographs are for illustrative purposes only. This work is exclusively owned by AB Aust. IP Pty Ltd (ACN 163 575 077) and cannot be reproduced or copied wholly or in part, in any form without permission of AB Aust. IP Pty Ltd. Any prices in this document include GST, are subject to change without notice, relate only to the base house price and standard inclusions. Site costs will vary depending on site conditions, local Council requirements, estate guidelines and any other statutory requirements applicable. Adenbrook Homes does not have a hold on the block, this package is subject to land availability and you securing the land through the land agent directly. For more information please speak to one of our friendly New Home Consultants.