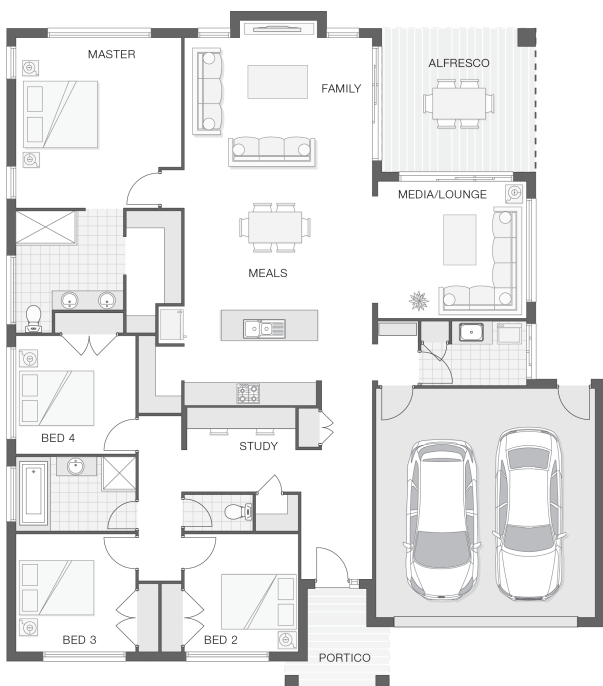


## The Austin

4 2 2 26 sq

Facade name: Bexley

### House Plan:



### LOT #15

Bronzewing Park

Address: Proposed Road, Tahmoor, 2573



548 m<sup>2</sup>

House and land package price:

From **\$688,900\***

### About package:

Adenbrook Homes South West Sydney are a locally owned and operated builder, backed by an award-winning franchise. We offer this amazing house and land package in Bronzewing Park Estate, Tahmoor.

The Austin home design is the quintessential family home that has been designed for entertaining, family living and privacy alike. The crafty design offers a central hub to the home where the kitchen, family, rumpus and dining spaces converge with the alfresco dining space, offering practicality and the ultimate entertaining zone.

What's included in your Adenbrook Home:

- Standard Site Costs and Standard Basix Requirements
- Builders range tiles & carpet throughout home
- Tiling to the Alfresco and Portico
- Coloured Concrete Driveway
- Daiken Reverse Cycle Ducted Air Con.
- Caroma Bathroom Accessories

Contact us today to find out how we can help you create your dream house and land package. You can also view our Orion and Sapphire designs on display at 6 Coral Circuit, Leppington - contact our team to book your inspection today.

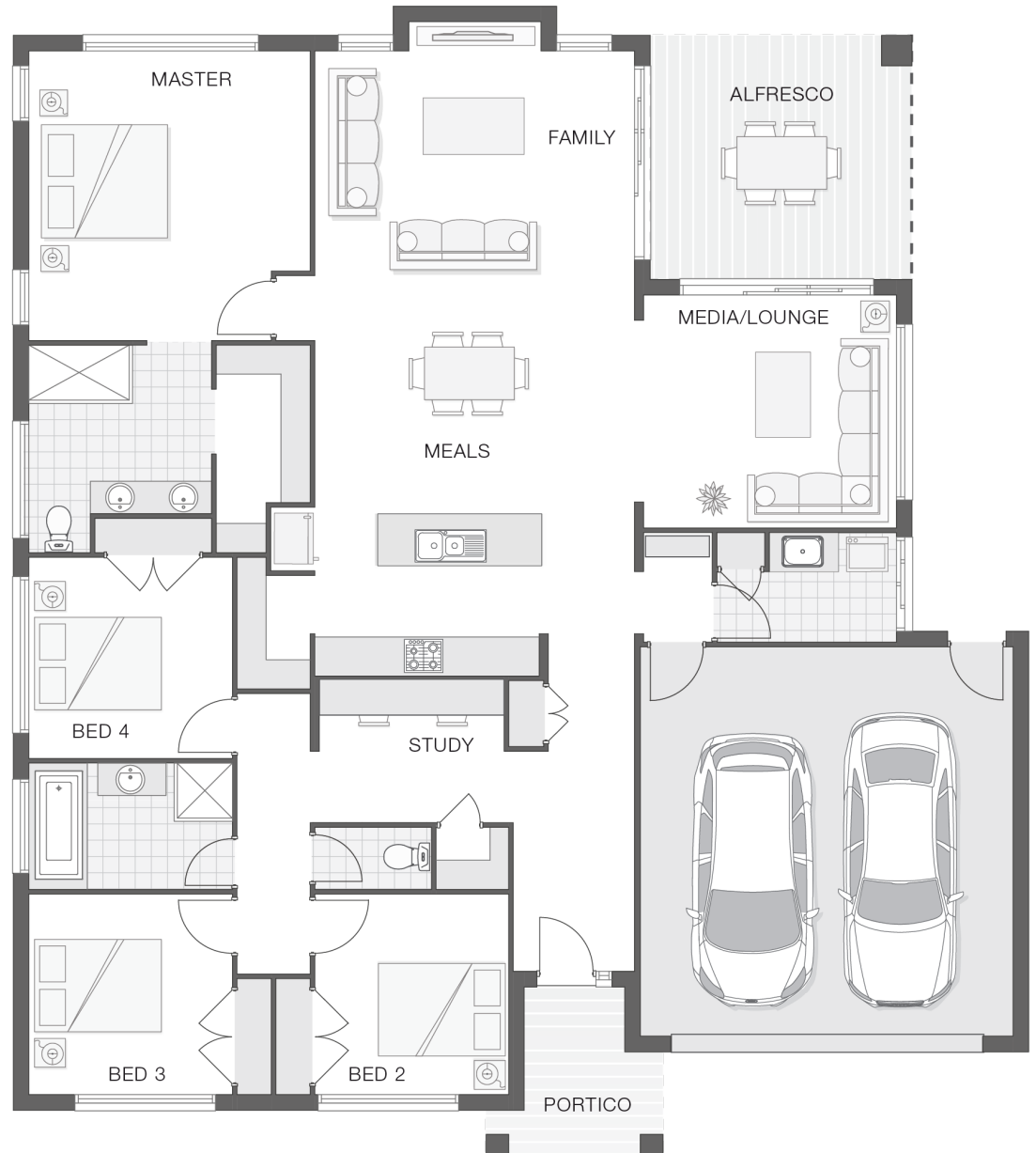
### ENQUIRE NOW:

Jillian Stokes • P: 0415 301 615 • E: [greaterwollongong@adenbrook.com.au](mailto:greaterwollongong@adenbrook.com.au)

Plans and designs depicted may change with facade selection. All drawings and photographs are for illustrative purposes only. This work is exclusively owned by AB Aust. IP Pty Ltd (ACN 163 575 077) and cannot be reproduced or copied wholly or in part, in any form without permission of AB Aust. IP Pty Ltd. Any prices in this document include GST, are subject to change without notice, relate only to the base house price and standard inclusions. Site costs will vary depending on site conditions, local Council requirements, estate guidelines and any other statutory requirements applicable. Adenbrook Homes does not have a hold on the block, this package is subject to land availability and you securing the land through the land agent directly. For more information please speak to one of our friendly New Home Consultants.

### House Features:

- ✓ Tiling to the Alfresco and Portico
- ✓ 1020mm Entry Door
- ✓ Coloured Concrete Driveway
- ✓ Monier Atura low-profile roof tiles
- ✓ 2590mm Ceiling Upgrade
- ✓ Standard Site Costs and Standard Basix Requirements
- ✓ 20mm Stone benchtop to the kitchen, bathroom and Ensuite.
- ✓ Shower Niches
- ✓ R2 Walls and R4 Ceiling Insulation
- ✓ Soft-close drawers and doors to Kitchen and Bathrooms
- ✓ Builders range tiles & carpet throughout home
- ✓ Daiken Reverse Cycle Ducted Air Conditioning
- ✓ Westinghouse Cooktop, Oven and Dishwasher
- ✓ 2x Gas Points
- ✓ Flyscreens To all openable windows
- ✓ Much More...



### ENQUIRE NOW:

Jillian Stokes • P: 0415 301 615 • E: [greaterwollongong@adenbrook.com.au](mailto:greaterwollongong@adenbrook.com.au)

Plans and designs depicted may change with facade selection. All drawings and photographs are for illustrative purposes only. This work is exclusively owned by AB Aust. IP Pty Ltd (ACN 163 575 077) and cannot be reproduced or copied wholly or in part, in any form without permission of AB Aust. IP Pty Ltd. Any prices in this document include GST, are subject to change without notice, relate only to the base house price and standard inclusions. Site costs will vary depending on site conditions, local Council requirements, estate guidelines and any other statutory requirements applicable. Adenbrook Homes does not have a hold on the block, this package is subject to land availability and you securing the land through the land agent directly. For more information please speak to one of our friendly New Home Consultants.