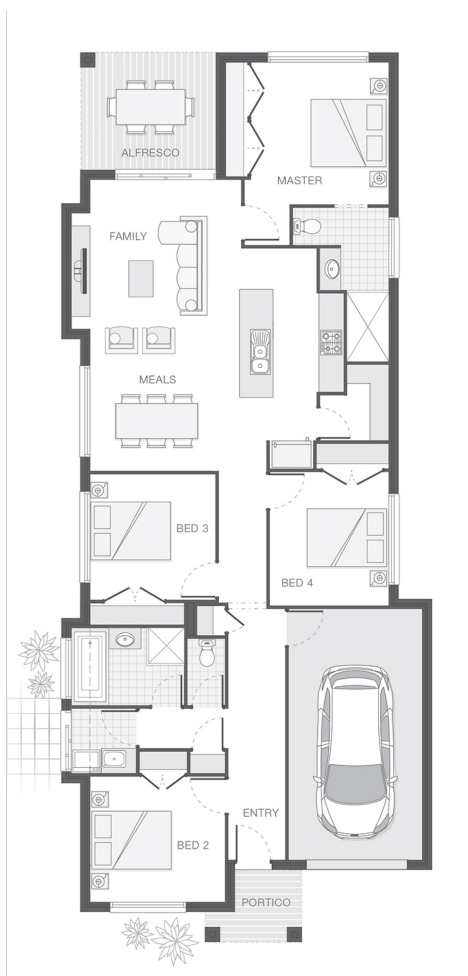




House Plan:



LOT #11

Green Ridge

Address: Livadi Street, Park Ridge, 4125



330 m²

The Macleay - Gold Coast

Package Price From

4 2 1 164 m²

\$428,911*

About package:

This is your chance to get into the market in an ideal location within 30 minutes from the Brisbane CBD and less than 10 minutes from Park Ridge Shopping Centre and local schools.

Situated in Green Ridge Estate, Park Ridge this home & land package is set on a low maintenance living 330sqm. block of land coupled with our modern, open plan Macleay design this package is the ideal starter.

For a limited time this package comes with our Ultimate Bundle & new Intensify Your Style Promo which are full of amazing features and represent true quality.

This package includes:

- Concrete Driveway
- Carpet & Tiles Throughout
- 2590mm Ceiling Height
- Daikin Reverse Cycle Split System Air Conditioning (x2)
- 40mm Stone Benchtops to Kitchen & Bathrooms
- Upgraded Laminex Impressions Kitchen Cabinetry
- 900mm Stainless Steel Westinghouse Appliances
- LED Downlights & NBN Connection
- Sponge Finish Render to Feature Facade Area
- Breakfast Bar with Waterfall Edges
- Undermount Sink & Stylish Mixer
- Chic Clipsal Powerpoints & Switches
- Undercover Alfresco Entertaining Area
- Soft Close Doors & Drawers to Kitchen and Bathrooms

ENQUIRE NOW:

Con Sgouros • P: 0404 308 208 • E: goldcoast@adenbrook.com.au

Plans and designs depicted may change with facade selection. All drawings and photographs are for illustrative purposes only. This work is exclusively owned by AB Aust. IP Pty Ltd (ACN 163 575 077) and cannot be reproduced or copied wholly or in part, in any form without permission of AB Aust. IP Pty Ltd. Any prices in this document include GST, are subject to change without notice, relate only to the base house price and standard inclusions. Site costs will vary depending on site conditions, local Council requirements, estate guidelines and any other statutory requirements applicable. Adenbrook Homes does not have a hold on the block, this package is subject to land availability and you securing the land through the land agent directly. For more information please speak to one of our friendly New Home Consultants.