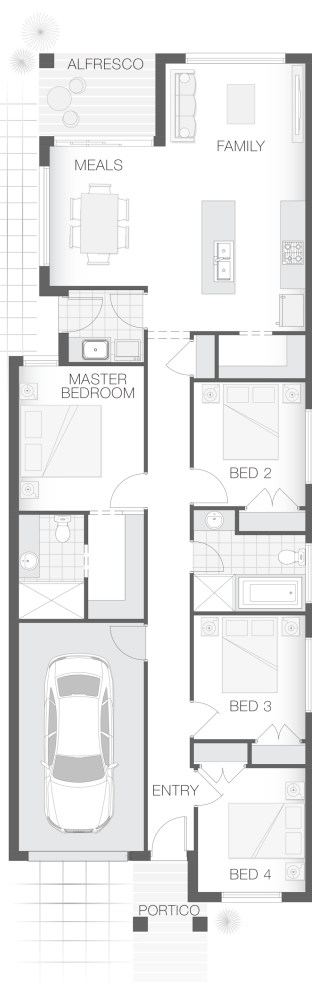


The Phoenix

4 2 1 16 sq

Facade name: Byron

House Plan:



LOT #1109

Willowdale

Address: Proposed Road, Denham Court, 2565



252 m²

House and land package price:

From **\$603,900***

About package:

Adenbrook Homes South West Sydney are a locally owned and operated builder, backed by an award-winning franchise.

The Phoenix A design is contemporary and intended to accommodate a small lot, yet still deliver on space. The open plan design lends to interactive family living, dining and alfresco entertaining space. This home offers the best in style and comfort for the smaller family.

What's included in your Adenbrook Home:

- Standard Site Costs and Standard Basix Requirements
- Builders range tiles & carpet throughout home
- Tiling to the Alfresco and Portico
- Coloured Concrete Driveway
- Daiken Reverse Cycle Ducted Air Con.
- Caroma Bathroom Accessories

*Please note this package is not eligible for the 25k Home Builders scheme. Land due to register in 2021

Contact us today to find out how we can help you create your dream house and land package. You can also view our Orion and Sapphire designs on display at 6 Coral Circuit, Leppington - contact our team to book your inspection today.

ENQUIRE NOW:

Matthew Micallef • P: 0406 248 064 • E: sydneywest.southwest@adenbrook.com.au

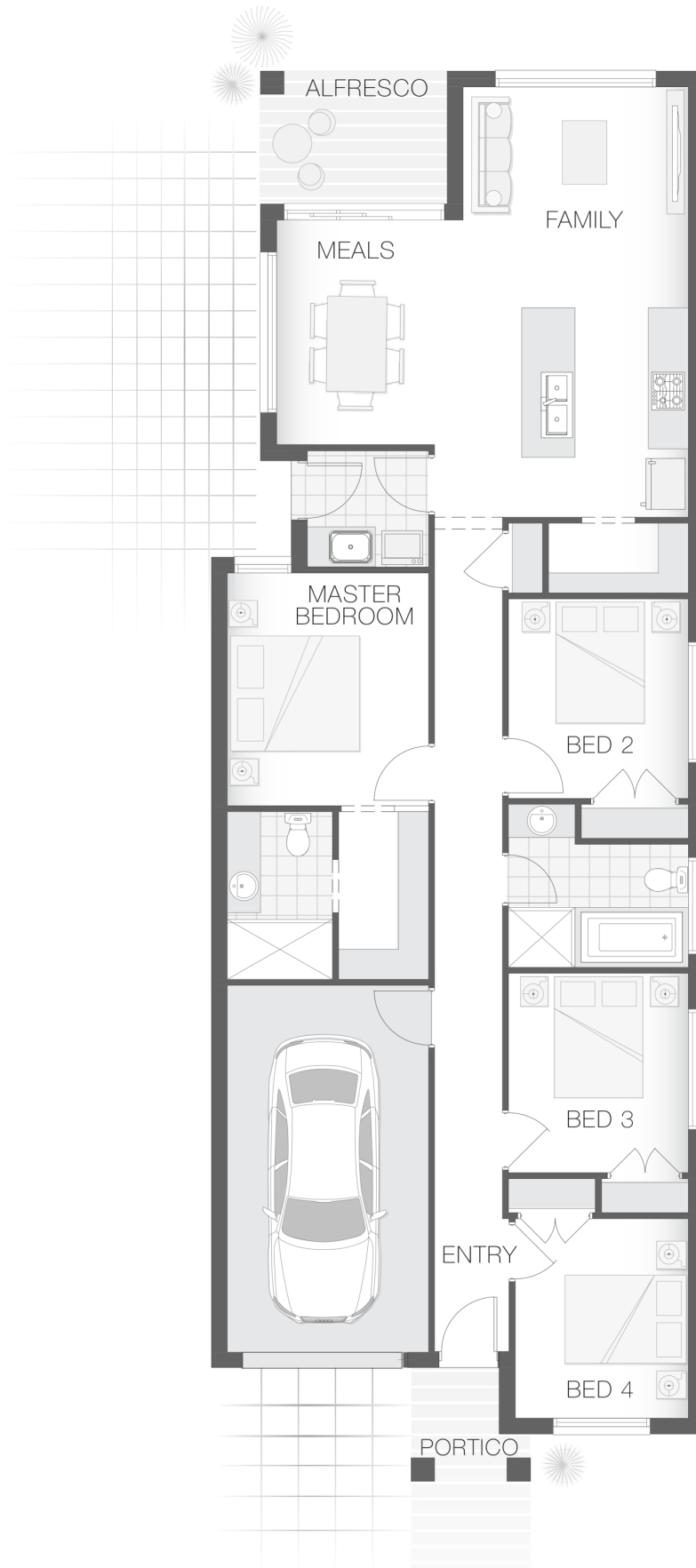
Images depicted on this site are for illustration purposes only. Facades and other images of homes and land estates may include optional upgrades, additional fixtures, finishes and home or estate features that are not included in the base price of the home or land package such as landscaping, feature tiling, decking, furnishing, feature lighting, pools, etc. Land estate pricing and plans are subject to developer guidelines and may vary at any time.

House Features:

- ✓ Tiling to the Alfresco and Portico
- ✓ 1020mm Entry Door
- ✓ Coloured Concrete Driveway
- ✓ Standard Site Costs and Standard Basix Requirements
- ✓ 20mm Stone benchtop to the kitchen, bathroom and Ensuite.
- ✓ Shower Niches
- ✓ R2 Walls and R4 Ceiling Insulation
- ✓ Soft-close drawers and doors to Kitchen and Bathrooms
- ✓ Builders range tiles & carpet throughout home
- ✓ Daiken Reverse Cycle Ducted Air Conditioning
- ✓ Westinghouse Cooktop, Oven and Dishwasher
- ✓ 2x Gas Points
- ✓ Flyscreens To all openable windows
- ✓ Much More...
- ✓ 2590mm Ceiling Upgrade

Estate Features:

- ✓ Leppington Public School
- ✓ Willowdale Shopping Centre
- ✓ Leppington Railway Station



ENQUIRE NOW:

Matthew Micallef • P: 0406 248 064 • E: sydneywest.southwest@adenbrook.com.au

Images depicted on this site are for illustration purposes only. Facades and other images of homes and land estates may include optional upgrades, additional fixtures, finishes and home or estate features that are not included in the base price of the home or land package such as landscaping, feature tiling, decking, furnishing, feature lighting, pools, etc. Land estate pricing and plans are subject to developer guidelines and may vary at any time.