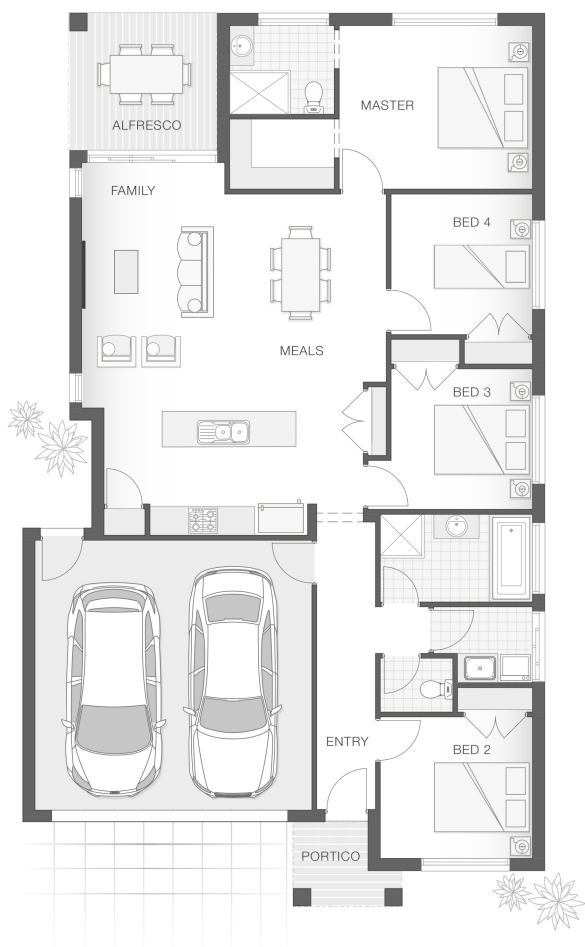


The Brampton - Option Z

4 2 2 19 sq

Facade name: Pallara

House Plan:



LOT #31

Waratah Estate Austral

Address: Proposed Road, Austral, 2179



361 m²

House and land package price:

From **\$636,900***

About package:

Adenbrook Homes South West Sydney are a locally owned and operated builder, backed by an award-winning franchise.

The Brampton home design is clever, comfortable and classy. The open plan design lends to interactive family living with open plan living, dining and alfresco entertaining space, while the bedrooms all achieve good separation and privacy. The master retreat has a well-appointed ensuite and walk-in-robe and is generous in size. This home offers the best in style and comfort for the smaller family.

What's included in your Adenbrook Home:

- Standard Site Costs and Standard Basix Requirements
- Builders range tiles & carpet throughout home
- Tiling to the Alfresco and Portico
- Coloured Concrete Driveway
- Daiken Reverse Cycle Ducted Air Con.
- Caroma Bathroom Accessories

*Please note this package is not eligible for the 25k Home Builders Scheme. Land registers Mid 2021.

Contact us today to find out how we can help you create your dream house and land package. You can also view our Orion and Sapphire designs on display at 6 Coral Circuit, Leppington - contact our team to book your inspection today.

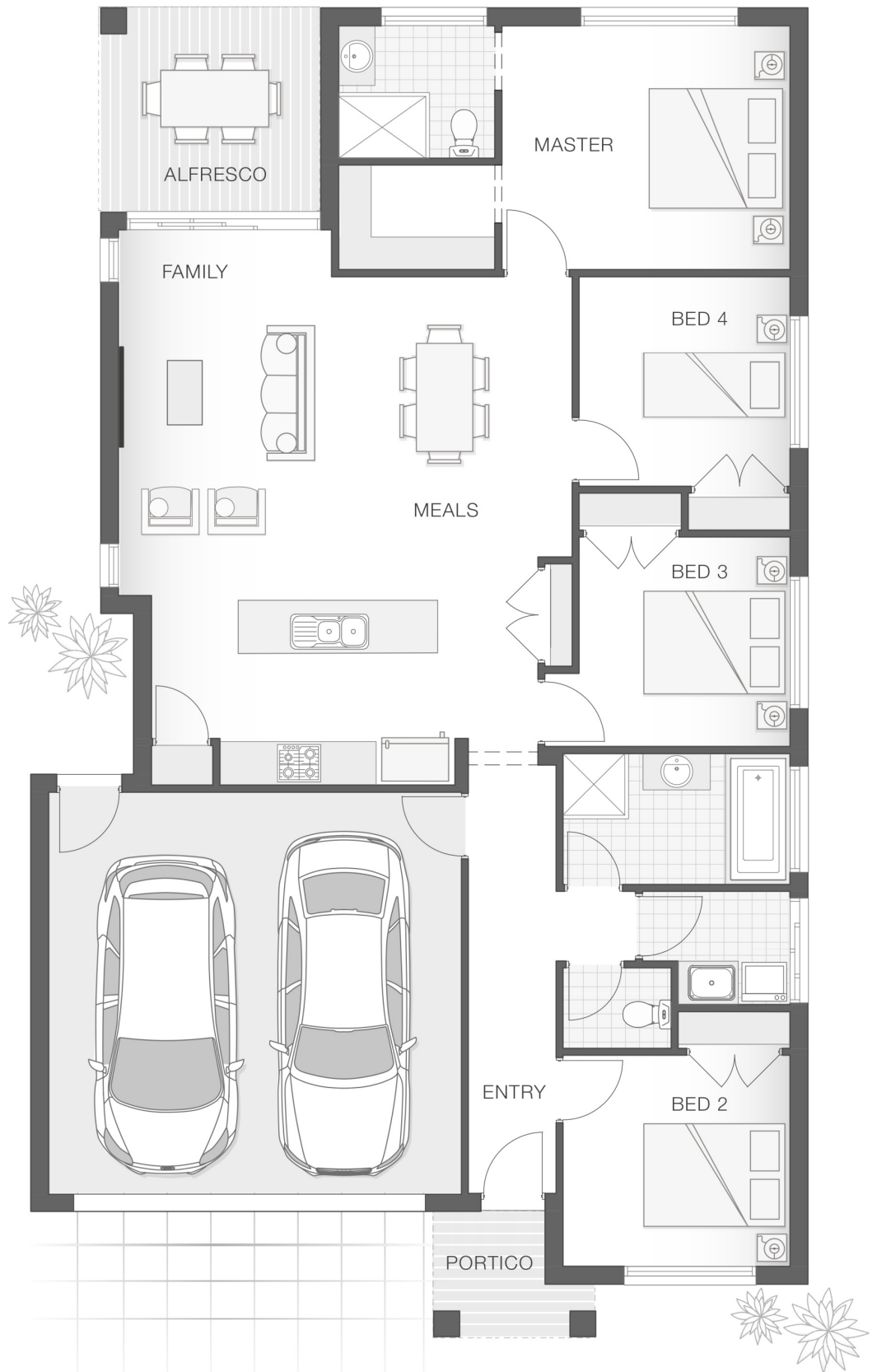
ENQUIRE NOW:

Matthew Micallef • P: 0406 248 064 • E: sydneywest.southwest@adenbrook.com.au

Images depicted on this site are for illustration purposes only. Facades and other images of homes and land estates may include optional upgrades, additional fixtures, finishes and home or estate features that are not included in the base price of the home or land package such as landscaping, feature tiling, decking, furnishing, feature lighting, pools, etc. Land estate pricing and plans are subject to developer guidelines and may vary at any time.

House Features:

- ✓ Tiling to the Alfresco and Portico
- ✓ 1020mm Entry Door
- ✓ 2590mm Ceiling Upgrade
- ✓ 2x Gas Points
- ✓ Flyscreens To all openable windows
- ✓ Much More...
- ✓ Soft-close drawers and doors to Kitchen and Bathrooms
- ✓ Shower Niches
- ✓ 20mm Stone benchtop to the kitchen, bathroom and Ensuite.
- ✓ Standard Site Costs and Standard Basix Requirements
- ✓ Coloured Concrete Driveway
- ✓ Westinghouse Cooktop, Oven and Dishwasher



ENQUIRE NOW:

Matthew Micallef • P: 0406 248 064 • E: sydneywest.southwest@adenbrook.com.au

Images depicted on this site are for illustration purposes only. Facades and other images of homes and land estates may include optional upgrades, additional fixtures, finishes and home or estate features that are not included in the base price of the home or land package such as landscaping, feature tiling, decking, furnishing, feature lighting, pools, etc. Land estate pricing and plans are subject to developer guidelines and may vary at any time.