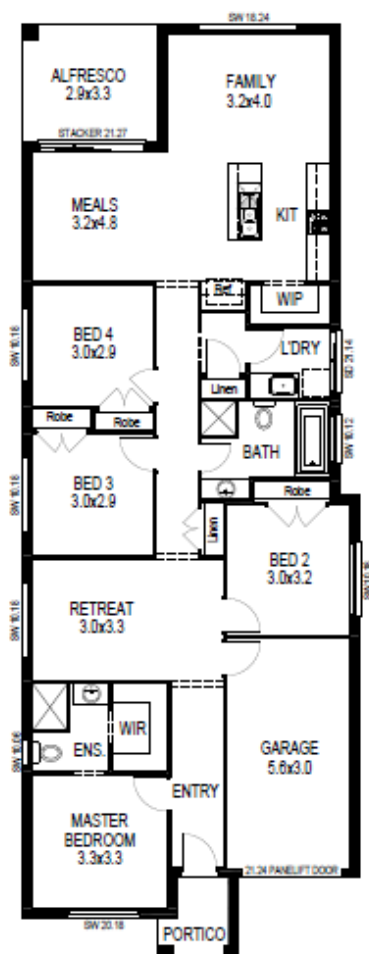


Lot 343 Calderwood

4 2 1 19 sq

Facade name: Byron

House Plan:



LOT #343

Calderwood Valley Estate

Address: Bottlebrush Drive, Calderwood, 2527



330 m²

House and land package price:

From **\$575,900***

About package:

Adenbrook Homes Wollongong are a locally owned and operated builder, backed by an award winning franchise. We offer this amazing house and land package. (Land registration Approximately mid 2021).

The Kendall home design is a smart and punchy design, cleverly featuring separate living zones and room for the whole family.

The master retreat occupies the front of the home, providing great separation from the additional bedrooms and main living space.

The slim design makes it practical and convenient while the generous proportions offer generous space for living, dining, outdoor and bedroom areas.

The retreat provides an escape from the general living, ensuring everyone has their own sanctuary.

What's included in your Adenbrook Home:

- Site Costs and BAL Requirements
- Builders range tiles & carpet throughout home
- Tiling to the Alfresco and Portico
- Coloured Concrete Driveway
- Caroma Bathroom Accessories
- Our Amazing "Ultimate Bundle" Promotion

ENQUIRE NOW:

Jillian Stokes • P: 0415 301 615 • E: greaterwollongong@adenbrook.com.au

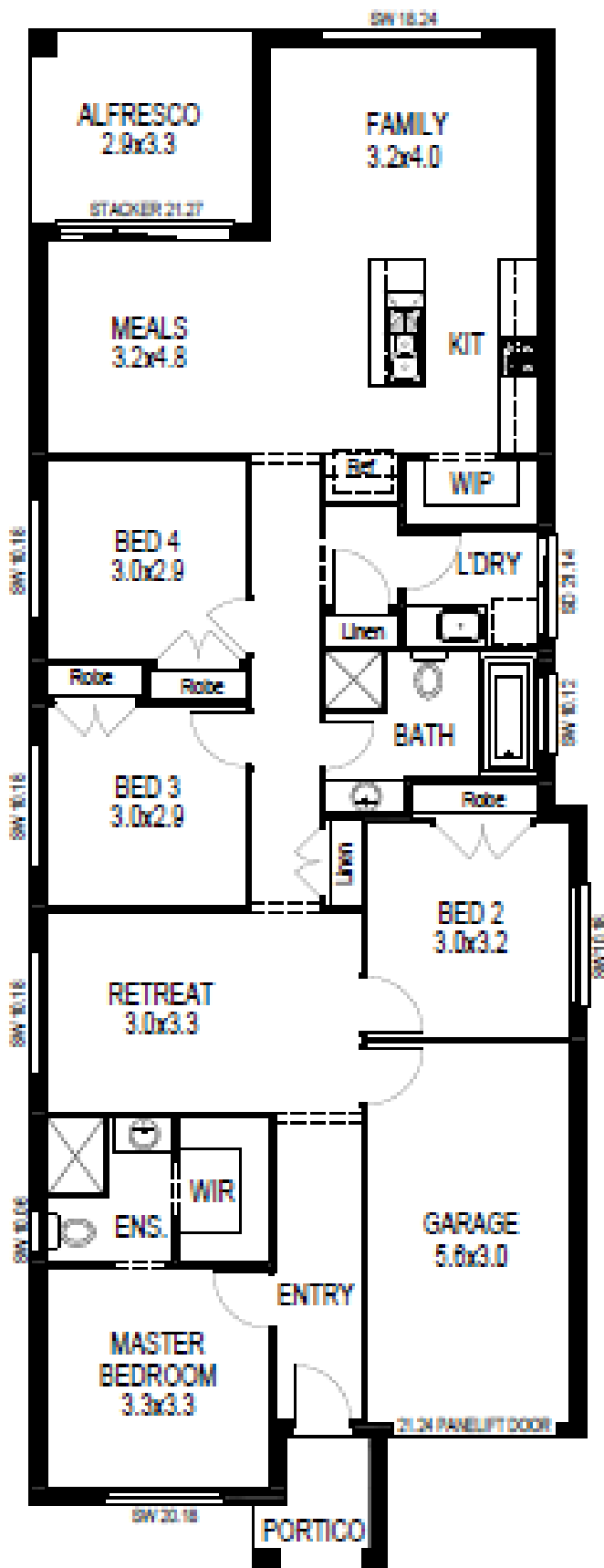
Plans and designs depicted may change with facade selection. All drawings and photographs are for illustrative purposes only. This work is exclusively owned by AB Aust. IP Pty Ltd (ACN 163 575 077) and cannot be reproduced or copied wholly or in part, in any form without permission of AB Aust. IP Pty Ltd. Any prices in this document include GST, are subject to change without notice, relate only to the base house price and standard inclusions. Site costs will vary depending on site conditions, local Council requirements, estate guidelines and any other statutory requirements applicable. Adenbrook Homes does not have a hold on the block, this package is subject to land availability and you securing the land through the land agent directly. For more information please speak to one of our friendly New Home Consultants.

House Features:

- ✓ Tiling to the Alfresco and Portico
- ✓ Coloured Concrete Driveway
- ✓ 20mm Stone benchtop to the kitchen, bathroom and Ensuite.
- ✓ Shower Niches
- ✓ R2 Walls and R4 Ceiling Insulation
- ✓ Soft-close drawers and doors to Kitchen and Bathrooms
- ✓ Much More...
- ✓ Builders range tiles & carpet throughout home
- ✓ 2x Gas Points
- ✓ Flyscreens To all openable windows
- ✓ 1020mm Entry Door
- ✓ Clipsal Iconic Ultramodern range Switch Gear
- ✓ 2590mm Ceiling Upgrade

Estate Features:

- ✓ St Paul's Catholic Primary School
- ✓ Stockland Shellharbour Shopping Centre
- ✓ Albion Park Station



ENQUIRE NOW:

Jillian Stokes • P: 0415 301 615 • E: greaterwollongong@adenbrook.com.au

Plans and designs depicted may change with facade selection. All drawings and photographs are for illustrative purposes only. This work is exclusively owned by AB Aust. IP Pty Ltd (ACN 163 575 077) and cannot be reproduced or copied wholly or in part, in any form without permission of AB Aust. IP Pty Ltd. Any prices in this document include GST, are subject to change without notice, relate only to the base house price and standard inclusions. Site costs will vary depending on site conditions, local Council requirements, estate guidelines and any other statutory requirements applicable. Adenbrook Homes does not have a hold on the block, this package is subject to land availability and you securing the land through the land agent directly. For more information please speak to one of our friendly New Home Consultants.