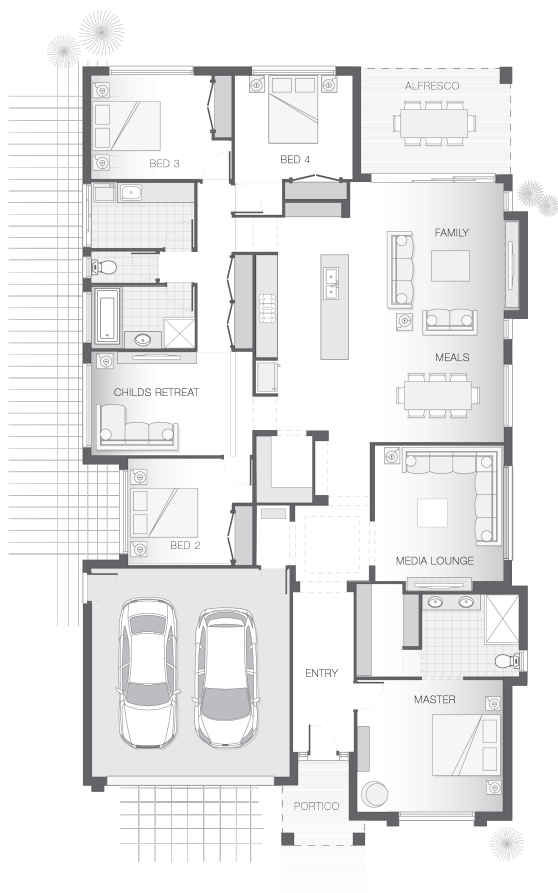




House Plan:



LOT #221

Ripley Valley

Address: Sable Street, Ripley, 4306



503 m²

The Orion - B - Gold Coast

Package Price From

4 2 2 262 m²

\$527,855*

About package:

Stunning home & land package in the heart of Ripley

Set on an ample 503 sqm. block of land coupled with our family focused Orion B design, this award winning Adenbrook Homes package is sure to impress.

For a limited time this package comes with our Ultimate Bundle & new Intensify your Style Promo which are full of amazing features and represent true quality.

This package includes:

- Coloured Concrete Driveway
- Carpet & Tiles Throughout
- 2590mm Ceiling Height
- Daikin Reverse Cycle Ducted Air Conditioning
- 40mm Stone Benchtops to Kitchen & Bathrooms
- Upgraded Laminex Impressions Kitchen Cabinetry
- 900mm Stainless Steel Westinghouse Appliances
- LED Downlights & NBN Connection
- Fencing & Landscaping
- Ceiling Fans to bedrooms (not including master)
- Breakfast Bar with Waterfall Edges
- Undermount Sink & Stylish Mixer
- Chic Clipsal Powerpoints & Switches
- Undercover Alfresco Entertaining Area
- Soft Close Doors & Drawers to Kitchen

ENQUIRE NOW:

Con Sgouros • P: 0404 308 208 • E: goldcoast@adenbrook.com.au

Images depicted on this site are for illustration purposes only. Facades and other images of homes and land estates may include optional upgrades, additional fixtures, finishes and home or estate features that are not included in the base price of the home or land package such as landscaping, feature tiling, decking, furnishing, feature lighting, pools, etc. Land estate pricing and plans are subject to developer guidelines and may vary at any time.

Powered by iBuildNew

adenbrook
homes

REF: IADEQHL501634