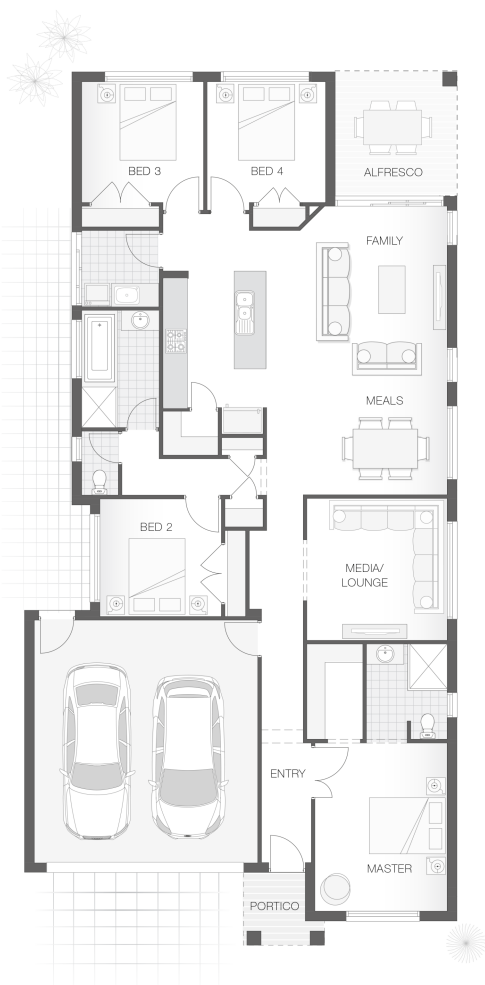


## The Saxon Option W

4 2 2 22 sq

Facade name: Pallara

### House Plan:



### LOT #STAGE 1B (LOT T.B.A)

1881 Tullimbar

Address: Proposed Road, Tullimbar, 2527



375 m<sup>2</sup>

House and land package price:

From **\$591,900\***

### About package:

Adenbrook Homes Wollongong are a locally owned and operated builder, backed by an award winning franchise. We offer this amazing house and land package. The land registers in 2022.

The Saxon W design when constructed on this great 375sqm block in Stage 1b 1881 Tullimbar.

The Saxon W home design achieves the perfect balance between compact living and functionality. The clever design incorporates a central hub for entertaining both indoors and out with the tidy alfresco area adjoining the kitchen, family room and meals zones. A touch of luxury is added through the separate media or lounge room while all bedrooms are well-appointed to allow separation and privacy. The master retreat includes an ensuite and walk-in robe to round out a convenient and punchy design.

What's included in your Adenbrook Home:

- Standard Site Costs and Standard Basix Requirements
- Builders range laminate & carpet throughout home
- Tiling to the Alfresco and Portico
- Coloured concrete driveway
- Daikin Ducted Air Conditioning
- Our Amazing Ultimate Bundle!

Contact us today to find out how we can help you create your dream house and land package. Contact our team to discuss this package.

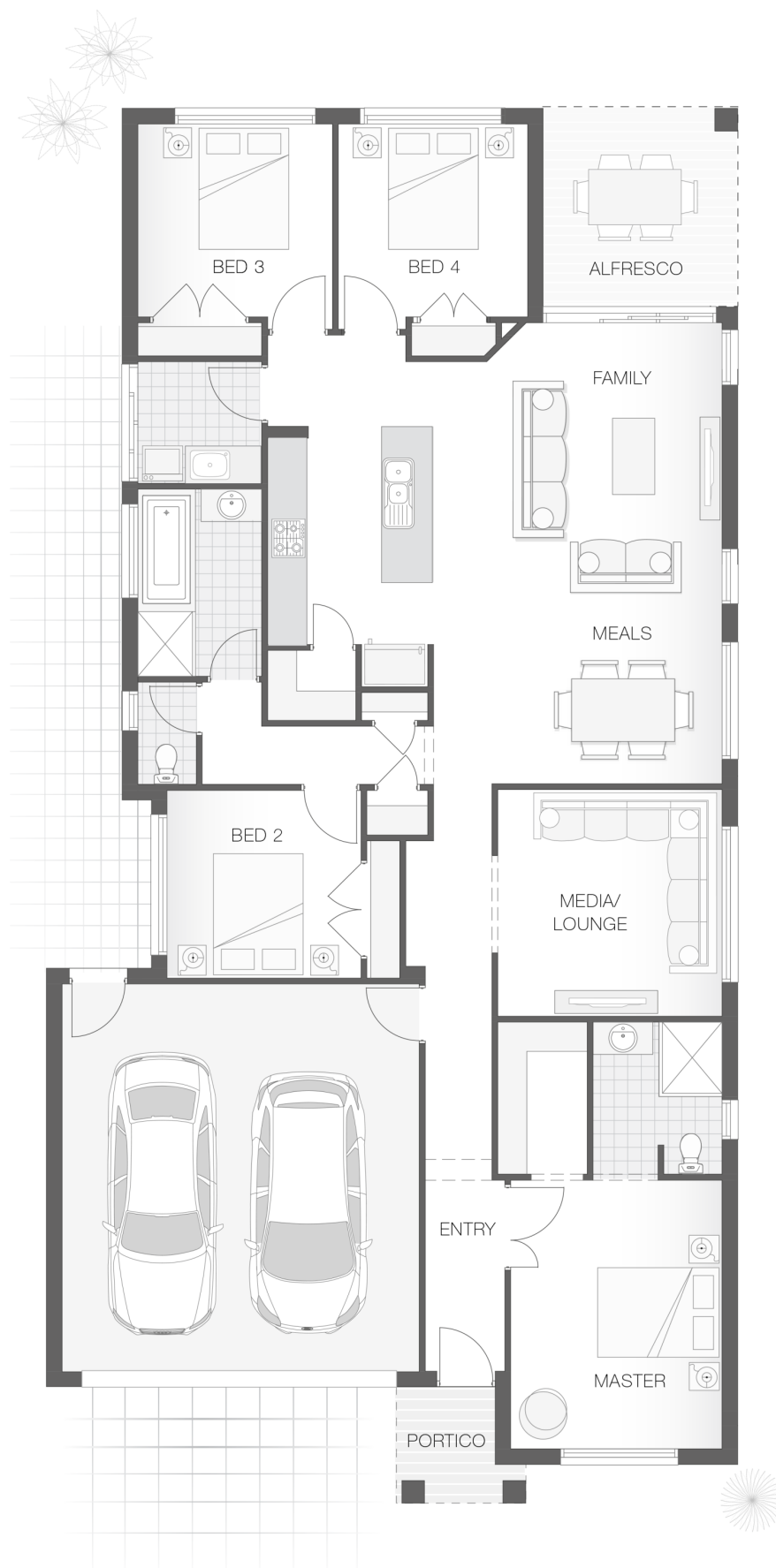
### ENQUIRE NOW:

Jillian Stokes • P: 0415 301 615 • E: [greaterwollongong@adenbrook.com.au](mailto:greaterwollongong@adenbrook.com.au)

Plans and designs depicted may change with facade selection. All drawings and photographs are for illustrative purposes only. This work is exclusively owned by AB Aust. IP Pty Ltd (ACN 163 575 077) and cannot be reproduced or copied wholly or in part, in any form without permission of AB Aust. IP Pty Ltd. Any prices in this document include GST, are subject to change without notice, relate only to the base house price and standard inclusions. Site costs will vary depending on site conditions, local Council requirements, estate guidelines and any other statutory requirements applicable. Adenbrook Homes does not have a hold on the block, this package is subject to land availability and you securing the land through the land agent directly. For more information please speak to one of our friendly New Home Consultants.

### House Features:

- ✓ Standard Site Costs and Standard Basix Requirements
- ✓ Tiling to the Alfresco and Portico
- ✓ 20mm Stone benchtop to the kitchen, bathroom and Ensuite.
- ✓ 2x Gas Points
- ✓ Clipsal Iconic Ultramodern range Switch Gear
- ✓ R2 Walls and R4 Ceiling Insulation
- ✓ 2590mm Ceiling Upgrade
- ✓ Soft-close drawers and doors to Kitchen and Bathrooms
- ✓ Flyscreens To all openable windows
- ✓ Monier Atura low-profile roof tiles
- ✓ Shower Niches
- ✓ 1020mm Entry Door
- ✓ Much More...



### ENQUIRE NOW:

Jillian Stokes • P: 0415 301 615 • E: [greaterwollongong@adenbrook.com.au](mailto:greaterwollongong@adenbrook.com.au)

Plans and designs depicted may change with facade selection. All drawings and photographs are for illustrative purposes only. This work is exclusively owned by AB Aust. IP Pty Ltd (ACN 163 575 077) and cannot be reproduced or copied wholly or in part, in any form without permission of AB Aust. IP Pty Ltd. Any prices in this document include GST, are subject to change without notice, relate only to the base house price and standard inclusions. Site costs will vary depending on site conditions, local Council requirements, estate guidelines and any other statutory requirements applicable. Adenbrook Homes does not have a hold on the block, this package is subject to land availability and you securing the land through the land agent directly. For more information please speak to one of our friendly New Home Consultants.