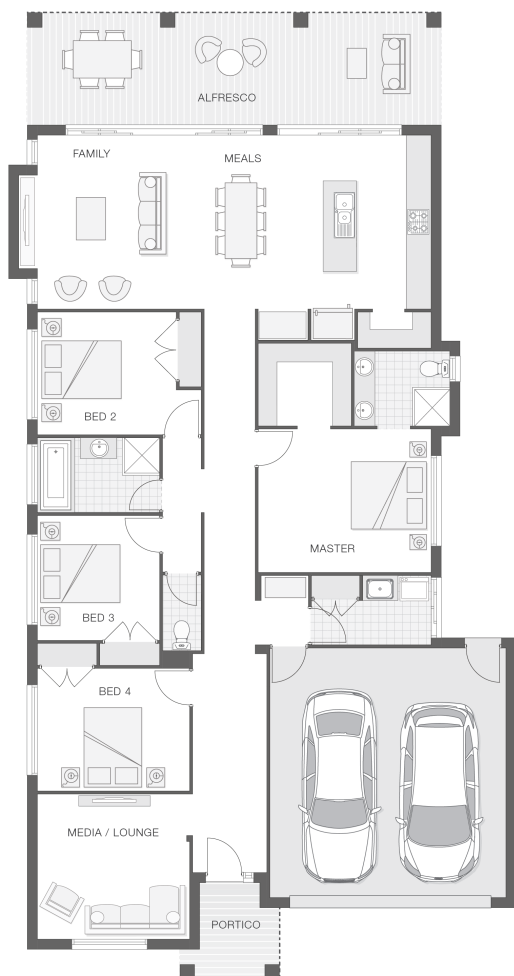


## The Isla - B

4 2 2 25 sq

Facade name: Karin

### House Plan:



### LOT #202

Woopi Beach Estate

Address: Woopi Beach Estate, Woolgoolga, 2456



600 m<sup>2</sup>

House and land package price:

From **\$583,150\***

### About package:

The Isla home design is sophisticated and stylish, offering all the modern features that you need to relax, entertain and enjoy! Only minutes south of the coastal village of Woolgoolga, you will find this new residential subdivision named Woopi Beach Estate.

Government stimulus package of \$25,000 CASH BONUS AVAILABLE NOW!

What's included in your beautifully finished, high quality new home

- All Council Fees and Approvals with M Class Soil
- Full sarking wrap to treated timber frames and roof
- Insulation to walls and ceiling, flyscreens
- Carpet / tiles or vinyl flooring
- Recessed wet areas
- Westinghouse appliances
- Alfresco with recessed stacking sliding doors
- Drop-in laundry tub with cabinet and clothesline
- Full electrical layout with downlights and feature lighting and TV aerial
- Water tank, mailbox and concrete driveway

Intensify your Style with up to \$20,000\* WORTH OF DESIGNER UPGRADES at NO COST

### KITCHEN UPGRADES

- Appliances
- Benchtops

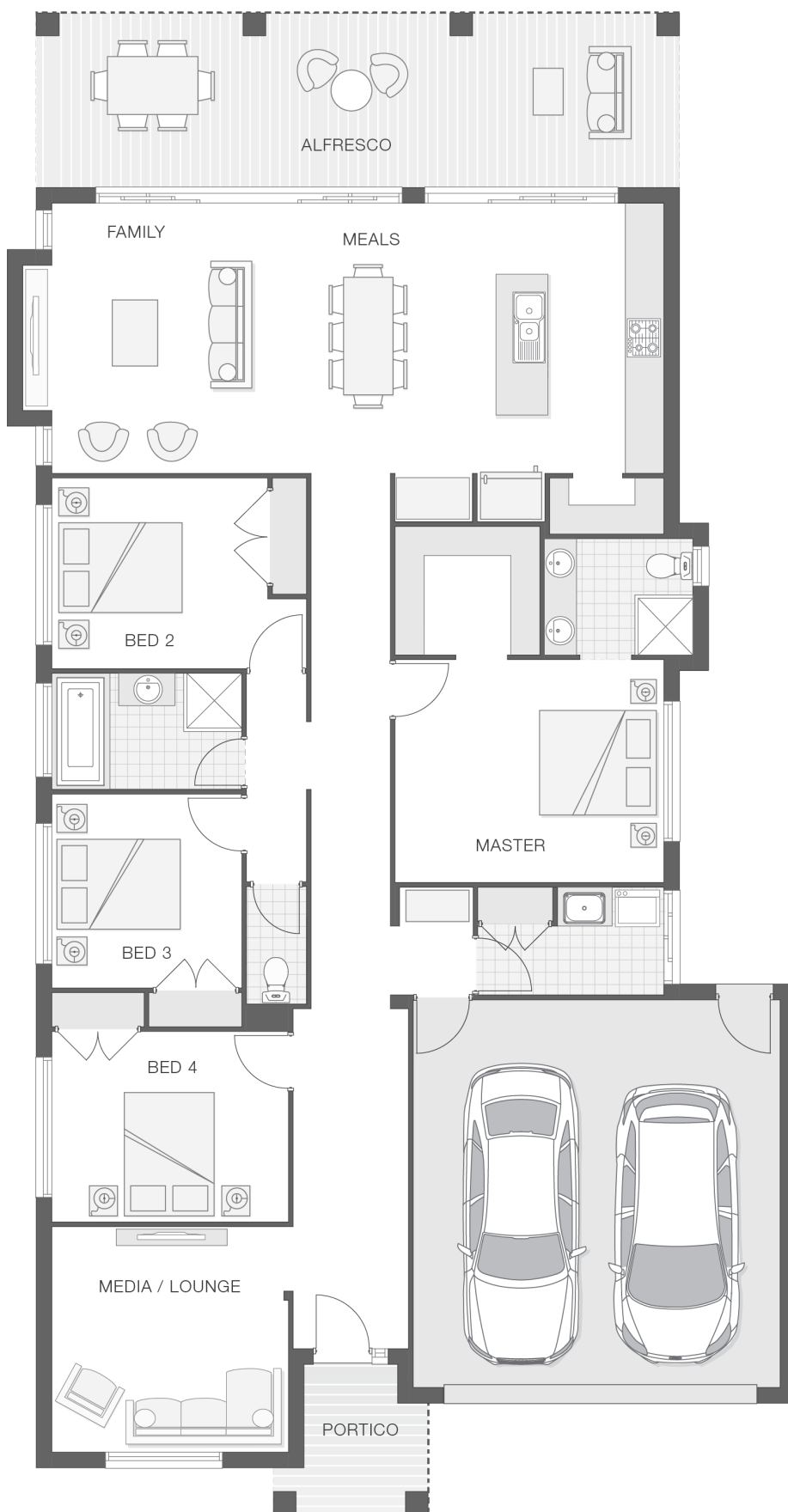
### ENQUIRE NOW:

Niki Whelan • P: 0412 797 925 • E: [coffs.display@adenbrook.com.au](mailto:coffs.display@adenbrook.com.au)

Plans and designs depicted may change with facade selection. All drawings and photographs are for illustrative purposes only. This work is exclusively owned by AB Aust. IP Pty Ltd (ACN 163 575 077) and cannot be reproduced or copied wholly or in part, in any form without permission of AB Aust. IP Pty Ltd. Any prices in this document include GST, are subject to change without notice, relate only to the base house price and standard inclusions. Site costs will vary depending on site conditions, local Council requirements, estate guidelines and any other statutory requirements applicable. Adenbrook Homes does not have a hold on the block, this package is subject to land availability and you securing the land through the land agent directly. For more information please speak to one of our friendly New Home Consultants.

### House Features:

- ✓ 20mm stone benchtops to kitchen
- ✓ Overhead cupboards to kitchen, 4 shelves to Pantry and Linen
- ✓ Double lock-up garage with remotes, mailbox, and clothesline
- ✓ Obscure glazing to bathroom, ensuite and WC
- ✓ Wideline aluminium windows, stacker and sliding doors, and flyscreens
- ✓ Carpet and Tile or Vinyl floors; modern architraves 67mm x 18mm
- ✓ Three (3) coat Haymes low toxic internal paint system
- ✓ Guaranteed build time, fixed price and no hidden costs
- ✓ Concrete Alfresco and Portico areas
- ✓ Site works allowance
- ✓ Builders Grant \$15K



### ENQUIRE NOW:

Niki Whelan • P: 0412 797 925 • E: [coffs.display@adenbrook.com.au](mailto:coffs.display@adenbrook.com.au)

Plans and designs depicted may change with facade selection. All drawings and photographs are for illustrative purposes only. This work is exclusively owned by AB Aust. IP Pty Ltd (ACN 163 575 077) and cannot be reproduced or copied wholly or in part, in any form without permission of AB Aust. IP Pty Ltd. Any prices in this document include GST, are subject to change without notice, relate only to the base house price and standard inclusions. Site costs will vary depending on site conditions, local Council requirements, estate guidelines and any other statutory requirements applicable. Adenbrook Homes does not have a hold on the block, this package is subject to land availability and you securing the land through the land agent directly. For more information please speak to one of our friendly New Home Consultants.