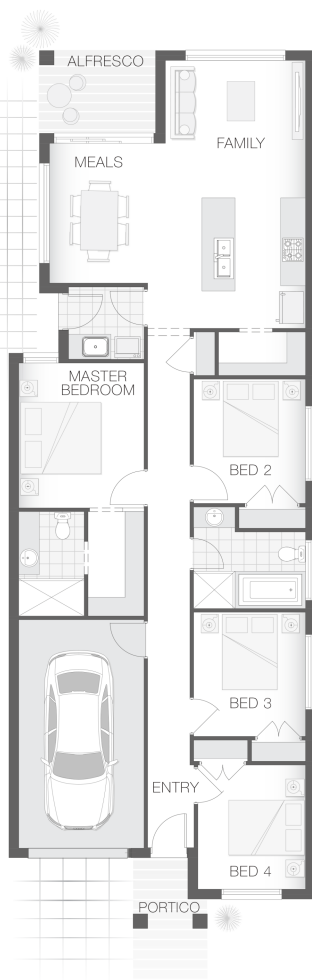


The Phoenix

4 2 1 16 sq

Facade name: Pallara

House Plan:



LOT #1171

Willowdale

Address: Proposed Road, Denham Court, 2565



252 m²

House and land package price:

From **\$597,900***

About package:

Adenbrook Homes South West Sydney are a locally owned and operated builder, backed by an award-winning franchise. We offer this amazing house and land package.

The Phoenix A design is contemporary and intended to accommodate a small lot, yet still deliver on space. Austral, will offer plenty of room for the family. The open plan design lends to interactive family living, dining and alfresco entertaining space. This home offers the best in style and comfort for the smaller family.

What's included in your Adenbrook Home:

- Standard Site Costs and Standard Basix Requirements
- Builders range tiles & carpet throughout home
- Tiling to the Alfresco and Portico
- Coloured Concrete Driveway
- Daiken Reverse Cycle Ducted Air Con.
- Caroma Bathroom Accessories

Please note this package is not eligible for the 25k Home Builders Scheme. Land Registers 2021.

Contact us today to find out how we can help you create your dream house and land package. You can also view our Orion and Sapphire designs on display at 6 Coral Circuit, Leppington - contact our team to book your inspection today.

ENQUIRE NOW:

Des Bojanic • P: 0406 248 064 • E: sydneywest.southwest@adenbrook.com.au

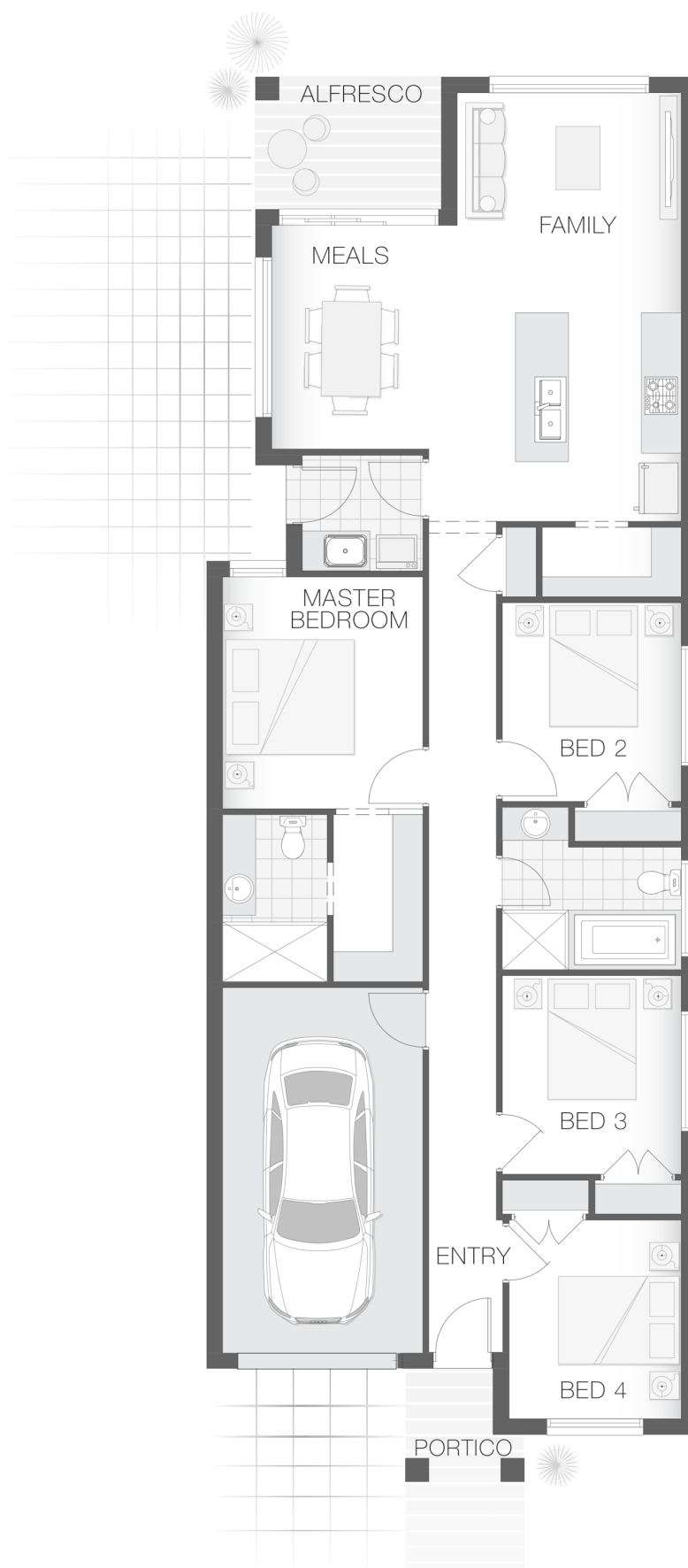
Plans and designs depicted may change with facade selection. All drawings and photographs are for illustrative purposes only. This work is exclusively owned by AB Aust. IP Pty Ltd (ACN 163 575 077) and cannot be reproduced or copied wholly or in part, in any form without permission of AB Aust. IP Pty Ltd. Any prices in this document include GST, are subject to change without notice, relate only to the base house price and standard inclusions. Site costs will vary depending on site conditions, local Council requirements, estate guidelines and any other statutory requirements applicable. Adenbrook Homes does not have a hold on the block, this package is subject to land availability and you securing the land through the land agent directly. For more information please speak to one of our friendly New Home Consultants.

House Features:

- ✓ Coloured Concrete Driveway
- ✓ Standard Site Costs and Standard Basix Requirements
- ✓ Tiling to the Alfresco and Portico
- ✓ 1020mm Entry Door
- ✓ Shower Niches
- ✓ Soft-close drawers and doors to Kitchen and Bathrooms
- ✓ 2590mm Ceiling Upgrade to the Ground Floor Only
- ✓ 20mm Stone benchtop to the kitchen, bathroom and Ensuite.
- ✓ Flyscreens To all openable windows
- ✓ Builders range tiles & carpet throughout home
- ✓ Daiken Reverse Cycle Ducted Air Conditioning
- ✓ Much More...

Estate Features:

- ✓ Leppington Public School
- ✓ Willowdale Shopping Centre
- ✓ Leppington Railway Station



ENQUIRE NOW:

Des Bojanic • P: 0406 248 064 • E: sydneywest.southwest@adenbrook.com.au

Plans and designs depicted may change with facade selection. All drawings and photographs are for illustrative purposes only. This work is exclusively owned by AB Aust. IP Pty Ltd (ACN 163 575 077) and cannot be reproduced or copied wholly or in part, in any form without permission of AB Aust. IP Pty Ltd. Any prices in this document include GST, are subject to change without notice, relate only to the base house price and standard inclusions. Site costs will vary depending on site conditions, local Council requirements, estate guidelines and any other statutory requirements applicable. Adenbrook Homes does not have a hold on the block, this package is subject to land availability and you securing the land through the land agent directly. For more information please speak to one of our friendly New Home Consultants.