



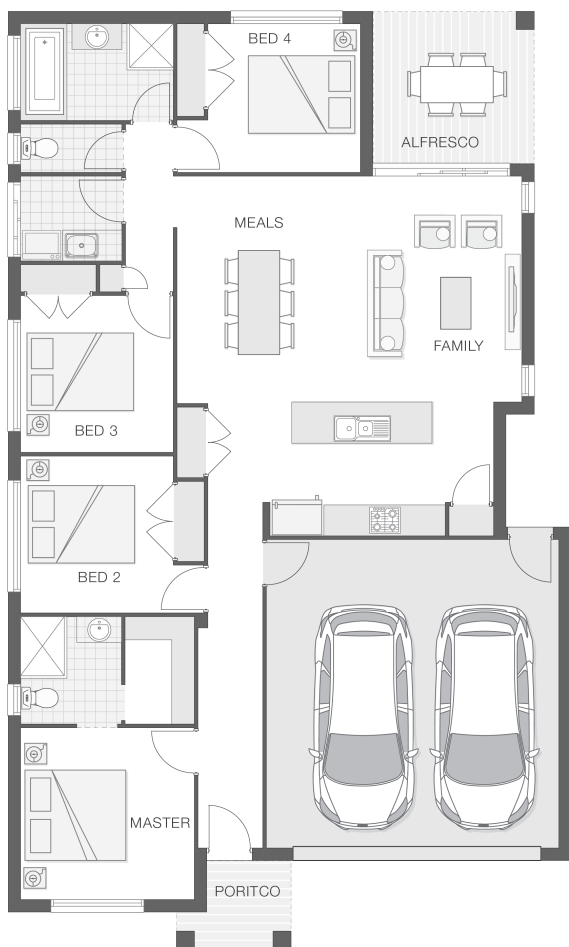


The Catarina

 4  2  2  19 sq

Facade name: Karin

House Plan:



LOT #BLOCK 2

Sunburst Estate

Address: William Street, Teralba, 2284



391 m²

House and land package price:

From **\$546,747***

About package:

INCLUSIONS:

- Ultimate Bundle
- Daikin Ducted Air Conditioning
- 20mm Stone benchtops to kitchen and bathroom*
- Shower niche to bathroom and ensuite
- 900mm Cooker and stainless steel appliances
- Concrete Driveway Allowance*
- Tiling to alfresco and portico
- Colourbond Roof
- Quality timber look flooring, carpet and tiles
- Flyscreens to all openable windows
- Remote Controlled garage door + 2 remotes
- Site Work Allowance*
- 2590mm high ceilings
- Double GPO's throughout
- Soft Close Drawers and Doors to Kitchen and Bathrooms
- Corinthian 1020mm Madison Entry Door
- All connections and services
- BASIX including water tank
- Front Landscape Package BRONZE to value of \$4,000
- Karin facade included

ENQUIRE NOW:

Paul James • P: 0418 656 366 • E: Hawkesbury.bluemountains@adenbrook.com.au

Images depicted on this site are for illustration purposes only. Facades and other images of homes and land estates may include optional upgrades, additional fixtures, finishes and home or estate features that are not included in the base price of the home or land package such as landscaping, feature tiling, decking, furnishing, feature lighting, pools, etc. Land estate pricing and plans are subject to developer guidelines and may vary at any time.

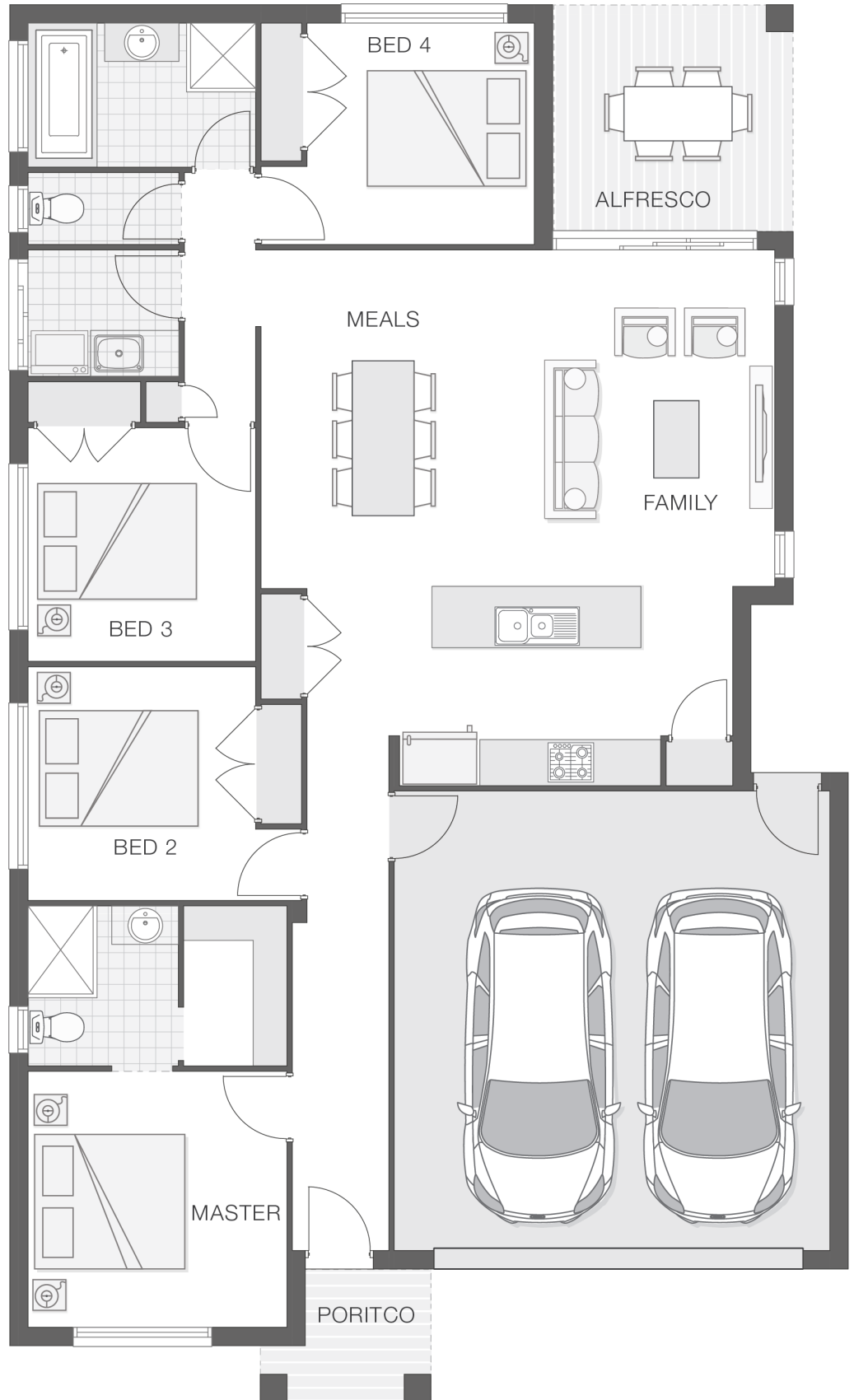
Powered by  iBuildNew

adenbrook
homes

REF: IADENHL502326

House Features:

- ✓ Colourbond Roof
- ✓ Double GPO's Throughout
- ✓ Stainless Steel Appliances
- ✓ 1020mm wide Feature Front Entry Door
- ✓ Concrete Driveway - 45m² Allowance
- ✓ Front Landscape Pack - BRONZE to the value of \$4,000
- ✓ Covered Concrete & Tiled Alfresco area
- ✓ Shower Niches to Ensuite & Bathroom
- ✓ Flyscreens
- ✓ 2590mm High Ceilings
- ✓ Ducted Air Conditioning
- ✓ Stone Benchtops to Kitchen and Bathrooms*
- ✓ 3 Phase Underground Power
- ✓ Basix
- ✓ All connections & services
- ✓ Termite Barrier Protection
- ✓ Soft Close Drawers & Doors
- ✓ Floor Coverings



ENQUIRE NOW:

Paul James • P: 0418 656 366 • E: Hawkesbury.bluemountains@adenbrook.com.au

Images depicted on this site are for illustration purposes only. Facades and other images of homes and land estates may include optional upgrades, additional fixtures, finishes and home or estate features that are not included in the base price of the home or land package such as landscaping, feature tiling, decking, furnishing, feature lighting, pools, etc. Land estate pricing and plans are subject to developer guidelines and may vary at any time.