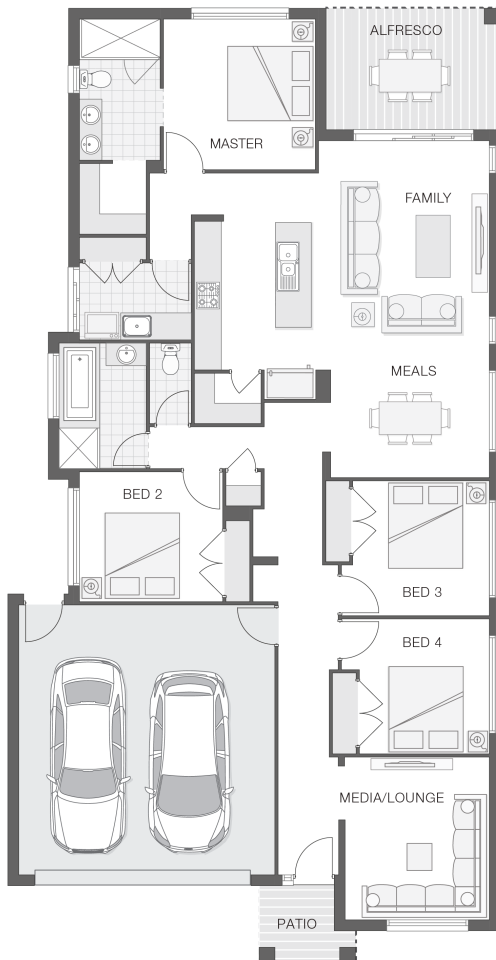


## The Saxon - D

4 2 2 22 sq

Facade name: Byron

### House Plan:



### LOT #120

Ocean Zephyr Estate

Address: Scarborough Way, Dunbogan, 2443



528 m<sup>2</sup>

House and land package price:

From **\$548,588\***

### About package:

Adenbrook Homes Mid North Coast are a locally owned and operated builder, backed by an award winning franchise. We offer turn-key pricing, designed to give you everything you need to move straight in - without the hidden costs.

The Saxon home design on this 528m<sup>2</sup> block achieves the perfect balance between compact living and functionality. The clever design incorporates a central hub for entertaining both indoors and out with the tidy alfresco area adjoining the kitchen, family room and meals zones. A touch of luxury is added through the separate media or lounge room while all bedrooms are well-appointed to allow separation and privacy. The master retreat includes an ensuite and walk-in-robe to round out a convenient and punchy design.

What is included in the price?

- Quality Timber Look Flooring, Carpet and Tiles
- Site works allowance, including creating split level design
- Flyscreens
- Rainwater Tank
- Remote Controlled Garage Door + 2 remotes
- Concrete Alfresco and Portico areas
- Letterbox and Clothesline

**\$25,000 CASH BONUS AVAILABLE NOW!** There has never been a better time to buy a new home than now! The Federal Government has announced a fabulous incentive scheme for new home buyers, with a \$25,000 cash bonus for new home builds. This scheme is available now

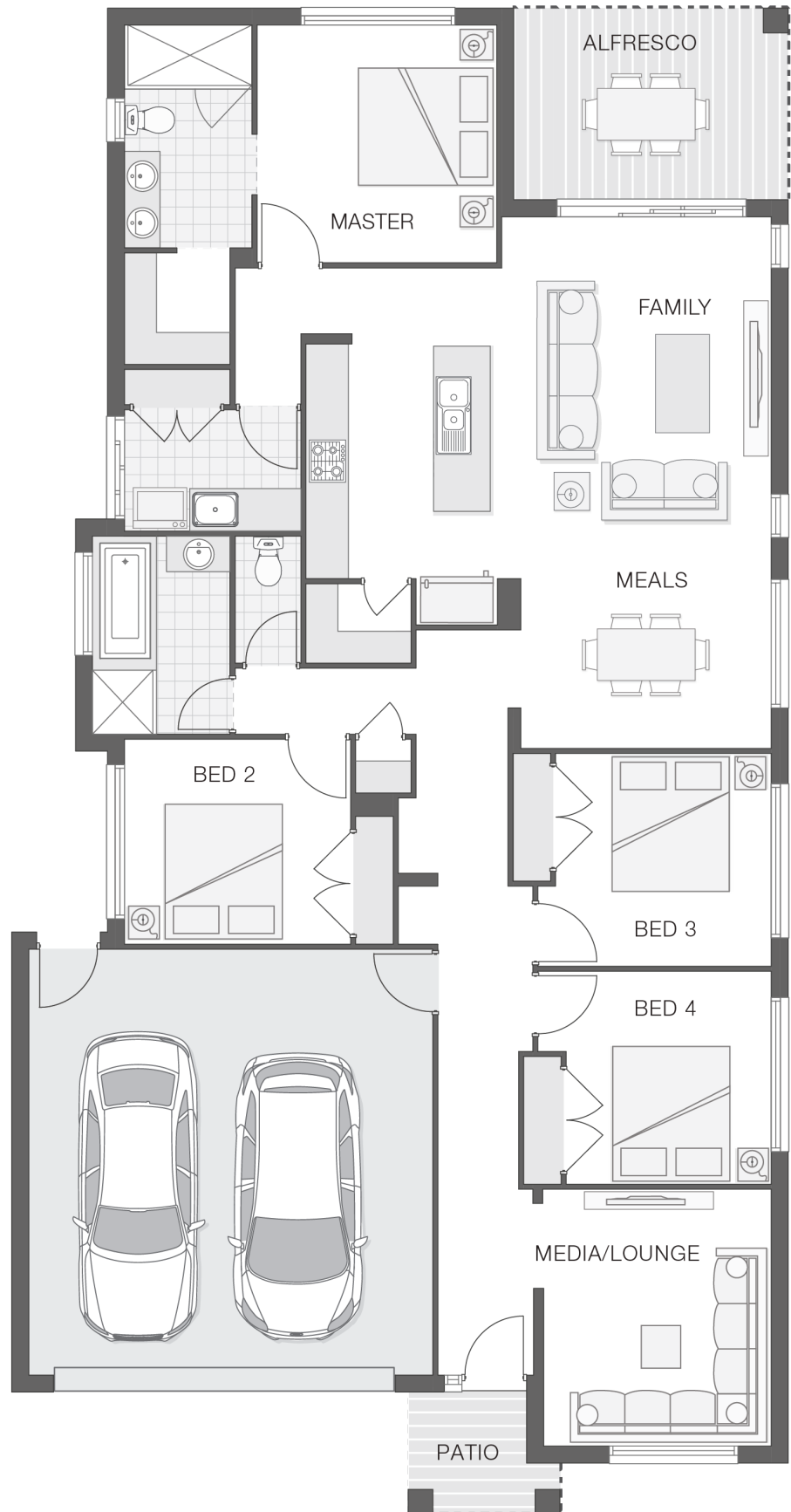
### ENQUIRE NOW:

Kristen Curry • P: 0401091313 • E: [portmacquarie.display@adenbrook.com.au](mailto:portmacquarie.display@adenbrook.com.au)

Plans and designs depicted may change with facade selection. All drawings and photographs are for illustrative purposes only. This work is exclusively owned by AB Aust. IP Pty Ltd (ACN 163 575 077) and cannot be reproduced or copied wholly or in part, in any form without permission of AB Aust. IP Pty Ltd. Any prices in this document include GST, are subject to change without notice, relate only to the base house price and standard inclusions. Site costs will vary depending on site conditions, local Council requirements, estate guidelines and any other statutory requirements applicable. Adenbrook Homes does not have a hold on the block, this package is subject to land availability and you securing the land through the land agent directly. For more information please speak to one of our friendly New Home Consultants.

### House Features:

- ✓ Remote Controlled Garage Door + 2 remotes
- ✓ Letterbox and Clothesline
- ✓ Flyscreens
- ✓ Concrete Alfresco and Portico areas
- ✓ Site works allowance
- ✓ 20mm stone benchtops to kitchen
- ✓ 900mm Cooker and Dishwasher
- ✓ 1200mm Hinged Wideline Aluminium Entry Door
- ✓ 2570mm high ceilings
- ✓ Brushed Concrete Driveway
- ✓ Dishwasher
- ✓ Quality Timber Look Flooring, Carpet and Tiles



### ENQUIRE NOW:

Kristen Curry • P: 0401091313 • E: [portmacquarie.display@adenbrook.com.au](mailto:portmacquarie.display@adenbrook.com.au)

Plans and designs depicted may change with facade selection. All drawings and photographs are for illustrative purposes only. This work is exclusively owned by AB Aust. IP Pty Ltd (ACN 163 575 077) and cannot be reproduced or copied wholly or in part, in any form without permission of AB Aust. IP Pty Ltd. Any prices in this document include GST, are subject to change without notice, relate only to the base house price and standard inclusions. Site costs will vary depending on site conditions, local Council requirements, estate guidelines and any other statutory requirements applicable. Adenbrook Homes does not have a hold on the block, this package is subject to land availability and you securing the land through the land agent directly. For more information please speak to one of our friendly New Home Consultants.