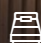
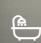



## The Hadley - A

 4  2  2  32 sq

Facade name: Kayman

### House Plan:

### LOT #BLOCK 8

Sunburst Estate

Address: Diesel Close, Teralba, 2284



420 m<sup>2</sup>

House and land package price:

From **\$740,513\***

### About package:

#### INCLUSIONS:

- Ultimate Bundle
- Daikin Ducted Air Conditioning
- 20mm Stone benchtops to kitchen and bathroom\*
- Shower niche to bathroom and ensuite
- 900mm Cooker and stainless steel appliances
- Concrete Driveway Allowance\*
- Colourbond Roof
- Quality timber look flooring, carpet and tiles
- Flyscreens to all openable windows
- Remote Controlled garage door + 2 remotes
- Tiled Alfresco and Portico
- Site Work Allowance\*
- 2590mm high ceilings (ground level)
- Double GPO's throughout
- Corinthian 1020mm Madison Entry Door
- All connections and services
- BASIX including water tank
- Front Landscape Package BRONZE to value of \$4,000
- Kayman facade included



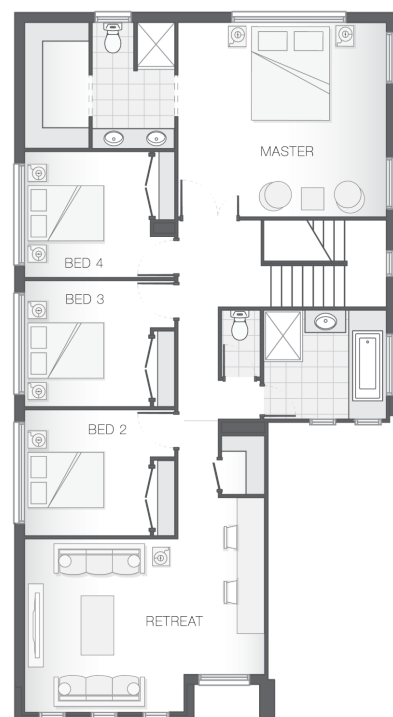
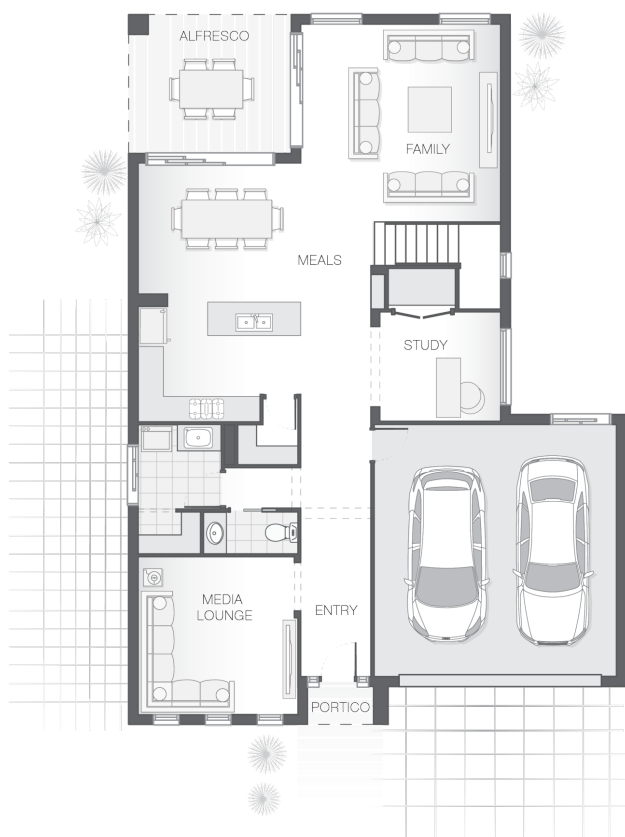
### ENQUIRE NOW:

Paul James • P: 0418 656 366 • E: [Hawkesbury.bluemountains@adenbrook.com.au](mailto:Hawkesbury.bluemountains@adenbrook.com.au)

Images depicted on this site are for illustration purposes only. Facades and other images of homes and land estates may include optional upgrades, additional fixtures, finishes and home or estate features that are not included in the base price of the home or land package such as landscaping, feature tiling, decking, furnishing, feature lighting, pools, etc. Land estate pricing and plans are subject to developer guidelines and may vary at any time.

## House Features:

- ✓ Colourbond Roof
- ✓ Double GPO's Throughout
- ✓ Stainless Steel Appliances
- ✓ 1020mm wide Feature Front Entry Door
- ✓ Ultimate Bundle
- ✓ Floor Coverings
- ✓ Ducted Air Conditioning
- ✓ Stone Benchtops to Kitchen and Bathrooms\*
- ✓ Concrete Driveway - 45m<sup>2</sup> Allowance
- ✓ 2590mm High Ceilings - Ground Floor Only
- ✓ Covered Concrete & Tiled Alfresco area
- ✓ Shower Niches to Ensuite & Bathroom
- ✓ Flyscreens
- ✓ Basix
- ✓ 3 Phase Underground Power
- ✓ All connections & services
- ✓ Termite Barrier Protection
- ✓ Soft Close Drawers & Doors
- ✓ Front Landscape Pack - BRONZE to the value of \$4,000



## ENQUIRE NOW:

Paul James • P: 0418 656 366 • E: [Hawkesbury.bluemountains@adenbrook.com.au](mailto:Hawkesbury.bluemountains@adenbrook.com.au)

Images depicted on this site are for illustration purposes only. Facades and other images of homes and land estates may include optional upgrades, additional fixtures, finishes and home or estate features that are not included in the base price of the home or land package such as landscaping, feature tiling, decking, furnishing, feature lighting, pools, etc. Land estate pricing and plans are subject to developer guidelines and may vary at any time.