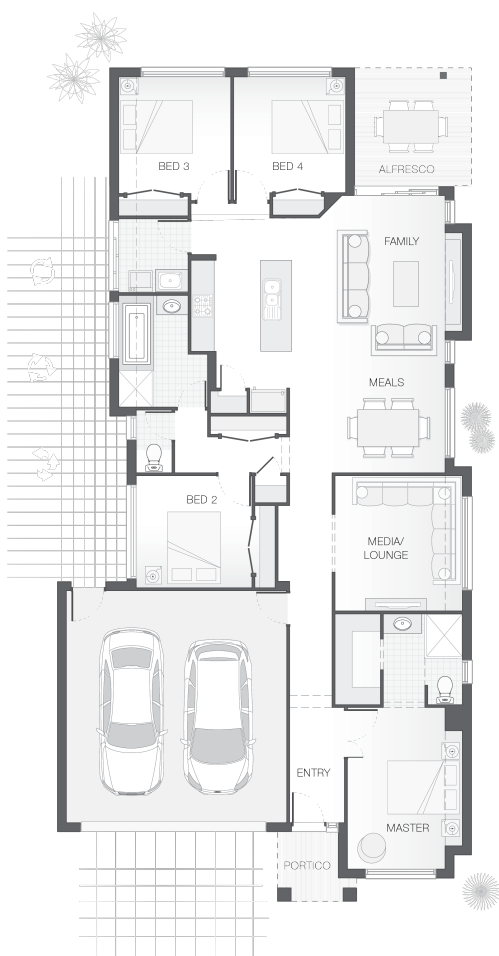




House Plan:



LOT #26

Pimpama Village

Address: Hamersley Street, Pimpama, 4209



360 m²

The Saxon - Gold Coast

Package Price From

4

2

2

197 m²

\$528,175*

About package:

This is the package you have been waiting for with award winning builder Adenbrook Homes your new home will ooze quality the moment you step in the front door.

Pimpama Village is a 5 minute drive to Westfield shopping centre, half an hours drive to the beautiful Gold Coast beaches and alternatively 35 minutes to Brisbane City,

This estate is only 2 minutes drive to the Highway and has a major shopping hub which includes a tavern, medical center, Coles and Aldi. There are 6 schools within 5 minutes drive.

Set on a low maintenance 360sqm. block of land coupled with the popular Saxon design, this package ticks all the right boxes.

For a limited time this package comes with our Ultimate Bundle & new Intensify Your Style Promo which are full of amazing features and represent true quality.

This package includes:

- Coloured Concrete Driveway
- Carpet & Tiles Throughout
- 2590mm Ceiling Height
- 40mm Stone Benchtops to Kitchen & Bathrooms
- Upgraded Laminex Impressions Kitchen Cabinetry
- 900mm Stainless Steel Westinghouse Appliances
- LED Downlights & NBN Connection
- Breakfast Bar with Waterfall Edges

ENQUIRE NOW:

Con Sgouros • P: 0404 308 208 • E: goldcoast@adenbrook.com.au

Plans and designs depicted may change with facade selection. All drawings and photographs are for illustrative purposes only. This work is exclusively owned by AB Aust. IP Pty Ltd (ACN 163 575 077) and cannot be reproduced or copied wholly or in part, in any form without permission of AB Aust. IP Pty Ltd. Any prices in this document include GST, are subject to change without notice, relate only to the base house price and standard inclusions. Site costs will vary depending on site conditions, local Council requirements, estate guidelines and any other statutory requirements applicable. Adenbrook Homes does not have a hold on the block, this package is subject to land availability and you securing the land through the land agent directly. For more information please speak to one of our friendly New Home Consultants.