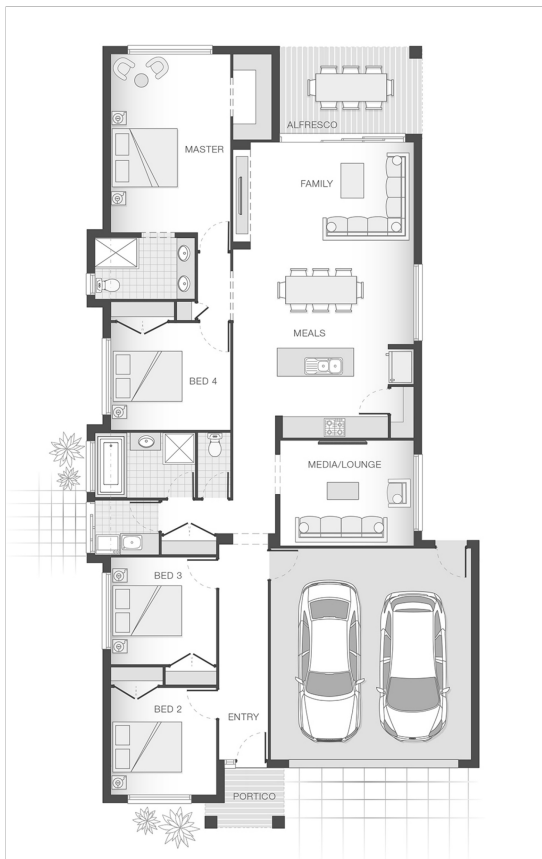




House Plan:



LOT #3085

The Surrounds

Address: Emerald Drive, Helensvale, 4212



400 m²

The Keppel - Gold Coast

Package Price From

4 2 2 206 m²

\$671,252*

About package:

This Adenbrook Home & Land package is located in the highly sought after Surrounds Estate in Helensvale.

The best of Gold Coast living – coastal, natural, community, cultural and commercial – it's all on your doorstep here. Enjoy outstanding connectivity to Brisbane and the Gold Coast, with the space to build the contemporary home you've been dreaming of. Discover an expertly landscaped environment, surrounded by the Coombabah Lake Conservation Park.

Set on an ample 400 sqm. block of land, coupled with our single storey delight, the Keppel it is sure to tick all the right boxes.

This impressive home & land package consists of our value packed Ultimate Bundle as well as many quality features such as:

- Exposed Aggregate Driveway
- Sponge Finished Render to entire home
- NBN connection & TV antenna
- Tiled Porch & Alfresco
- Floor Coverings Throughout
- Westinghouse Stainless Steel Appliances
- 2590mm Ceiling Height
- Stone Benchtops To Kitchen & Bathroom
- Letterbox & Clothesline
- LED Downlights
- H2 Treated Pine Frame

ENQUIRE NOW:

Con Sgouros • P: 0404 308 208 • E: goldcoast@adenbrook.com.au

Images depicted on this site are for illustration purposes only. Facades and other images of homes and land estates may include optional upgrades, additional fixtures, finishes and home or estate features that are not included in the base price of the home or land package such as landscaping, feature tiling, decking, furnishing, feature lighting, pools, etc. Land estate pricing and plans are subject to developer guidelines and may vary at any time.