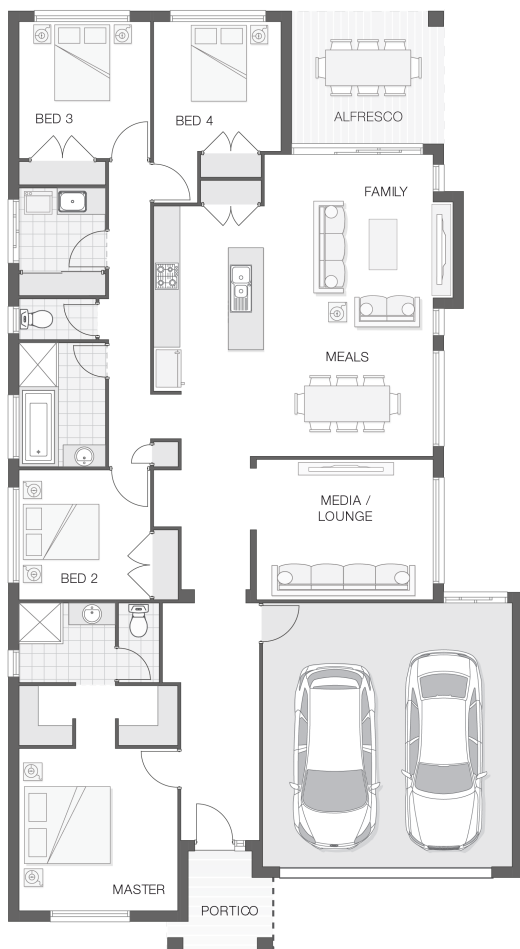


The Fraser

4 2 2 23 sq

Facade name: Arden

House Plan:



LOT #1158

Menangle Park

Address: Proposed Road, Menangle Park, 2563



420 m²

House and land package price:

From **\$672,900***

About package:

Adenbrook Homes West Sydney are a locally owned and operated builder, backed by an award-winning franchise. We offer this amazing house and land package located in Menangle Park. Land due to register Mid 2021

The Fraser home design is both intelligent and practical in layout and features. The deliberate placement of separate living and entertainment zones allows space for a touch of luxury in the form of a secluded master retreat with ensuite and walk-in-robe, while indoor and outdoor living flow.. effortlessly throughout the home.

With a media room and dedicated tech zone to store and recharge devices, this home has certainly been designed with the modern family in mind.

What's included in your Adenbrook Home:

- Builders range tiles & carpet throughout home
- Tiling to the Alfresco and Portico
- Coloured Concrete Driveway
- Daiken Reverse Cycle Ducted Air Con.
- Caroma Bathroom Accessories

Contact us today to find out how we can help you create your dream house and land package. You can also view our Orion and Sapphire designs on display at 6 Coral Circuit, Leppington - contact our team to book your inspection today.

ENQUIRE NOW:

Bec Hoyer • P: 0417427799 • E: sydneywest.southwest@adenbrook.com.au

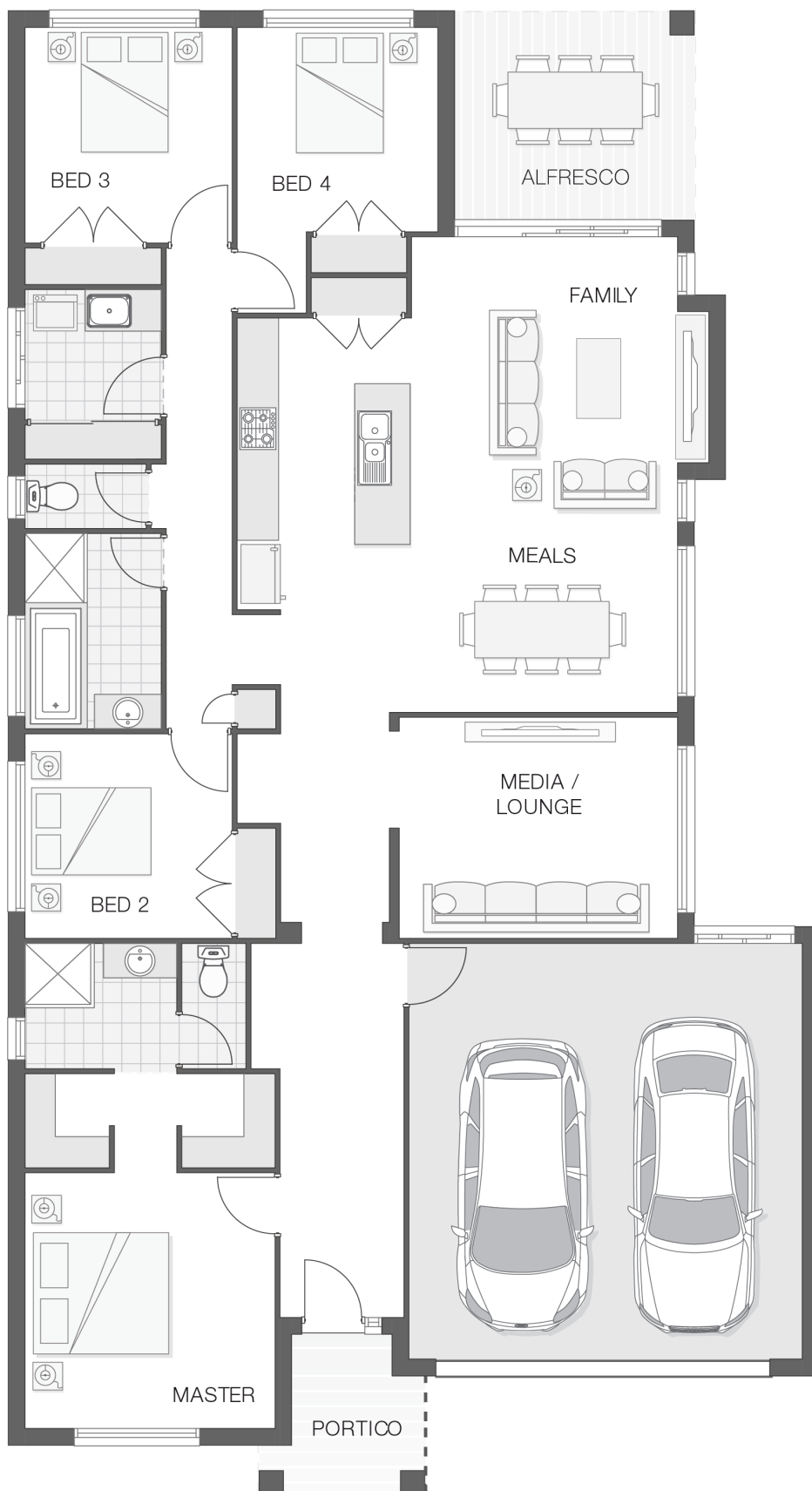
Images depicted on this site are for illustration purposes only. Facades and other images of homes and land estates may include optional upgrades, additional fixtures, finishes and home or estate features that are not included in the base price of the home or land package such as landscaping, feature tiling, decking, furnishing, feature lighting, pools, etc. Land estate pricing and plans are subject to developer guidelines and may vary at any time.

House Features:

- ✓ Tiling to the Alfresco and Portico
- ✓ 1020mm Entry Door
- ✓ Shower Niches
- ✓ Soft-close drawers and doors to Kitchen and Bathrooms
- ✓ 2590mm Ceiling Upgrade
- ✓ Standard Site Costs and Standard Basix Requirements
- ✓ Coloured Concrete Driveway
- ✓ 20mm Stone benchtop to the kitchen, bathroom and Ensuite.
- ✓ 2x Gas Points
- ✓ Flyscreens To all openable windows
- ✓ Much More...
- ✓ Daiken Reverse Cycle Ducted Air Conditioning
- ✓ Builders range tiles & carpet throughout home
- ✓ Westinghouse Cooktop, Oven and Dishwasher

Estate Features:

- ✓ Broughton Anglican College
- ✓ Spring Farm Shopping Centre
- ✓ Menangle Station



ENQUIRE NOW:

Bec Hoyer • P: 0417427799 • E: sydneywest.southwest@adenbrook.com.au

Images depicted on this site are for illustration purposes only. Facades and other images of homes and land estates may include optional upgrades, additional fixtures, finishes and home or estate features that are not included in the base price of the home or land package such as landscaping, feature tiling, decking, furnishing, feature lighting, pools, etc. Land estate pricing and plans are subject to developer guidelines and may vary at any time.