



## The Capestone

 4  2  2  26 sq

Facade name: Kayman

### House Plan:

### LOT #LOT 15 @ SCARBOROUGH PARK

Scarborough Estate

Address: Cinnamon Way, Morisset, 2264



502 m<sup>2</sup>

House and land package price:

From **\$675,250\***

### About package:

Land in this beautiful estate is registered and ready to build

#### INCLUSIONS:

- Ultimate Bundle
- Daikin Ducted Air Conditioning
- 20mm Stone benchtops to kitchen and bathroom\*
- Shower niche to bathroom and ensuite
- 900mm Cooker and stainless steel appliances
- Concrete Driveway Allowance\*
- H2 90mm treated pine frames
- Quality timber look flooring, carpet and tiles
- Flyscreens to all openable windows
- Remote Controlled garage door + 2 remotes
- Tiled Alfresco and Portico
- Site Work Allowance\*
- 2590mm high ceilings (ground level)
- Double GPO's throughout
- Clipsal iconic ultramodern range switch gear
- Corinthian 1020mm Madison Entry Door
- All connections and services
- BASIX including water tank
- Front Landscape Package BRONZE to value of \$4,000
- Kayman facade included

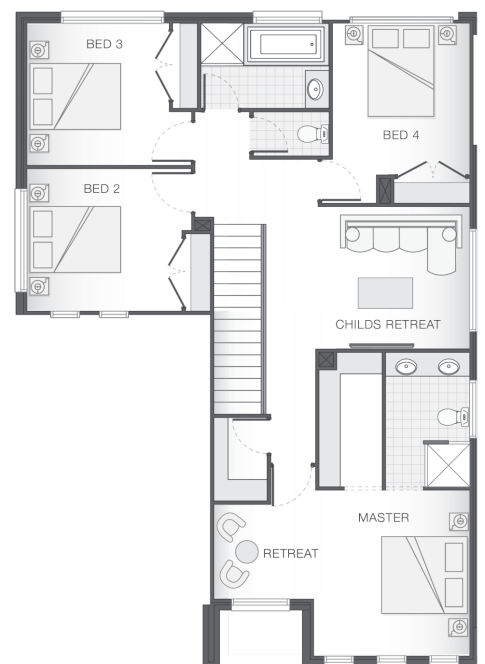
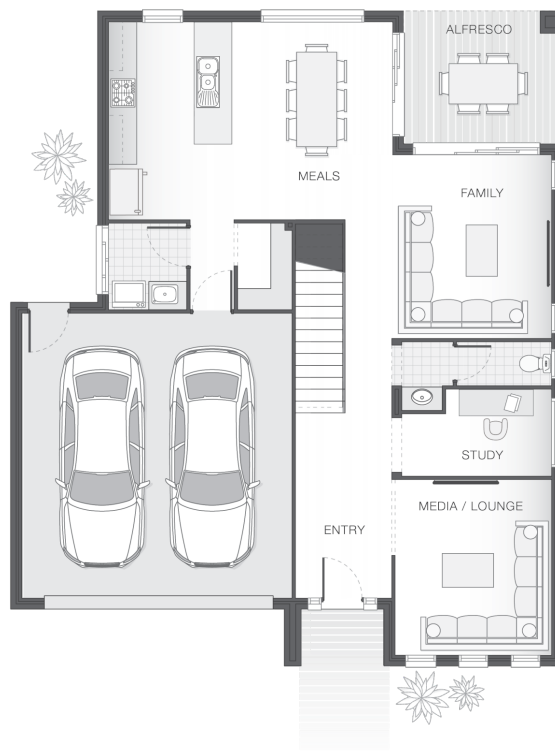
### ENQUIRE NOW:

Paul James • P: 0418 656 366 • E: [Hawkesbury.bluemountains@adenbrook.com.au](mailto:Hawkesbury.bluemountains@adenbrook.com.au)

Images depicted on this site are for illustration purposes only. Facades and other images of homes and land estates may include optional upgrades, additional fixtures, finishes and home or estate features that are not included in the base price of the home or land package such as landscaping, feature tiling, decking, furnishing, feature lighting, pools, etc. Land estate pricing and plans are subject to developer guidelines and may vary at any time.

## House Features:

- ✓ Ultimate Bundle
- ✓ Floor Coverings
- ✓ 1020mm wide Feature Front Entry Door
- ✓ Ducted Air Conditioning
- ✓ Stone Benchtops to Kitchen and Bathrooms\*
- ✓ Flyscreens
- ✓ Shower Niches to Ensuite & Bathroom
- ✓ Covered Concrete & Tiled Alfresco area
- ✓ Double GPO's Throughout
- ✓ Stainless Steel Appliances
- ✓ Basix
- ✓ 3 Phase Underground Power
- ✓ All connections & services
- ✓ Termite Barrier Protection
- ✓ Soft Close Drawers & Doors
- ✓ 2590mm High Ceilings - Ground Floor Only
- ✓ Front Landscape Pack - BRONZE to the value of \$4,000



## ENQUIRE NOW:

Paul James • P: 0418 656 366 • E: [Hawkesbury.bluemountains@adenbrook.com.au](mailto:Hawkesbury.bluemountains@adenbrook.com.au)

Images depicted on this site are for illustration purposes only. Facades and other images of homes and land estates may include optional upgrades, additional fixtures, finishes and home or estate features that are not included in the base price of the home or land package such as landscaping, feature tiling, decking, furnishing, feature lighting, pools, etc. Land estate pricing and plans are subject to developer guidelines and may vary at any time.