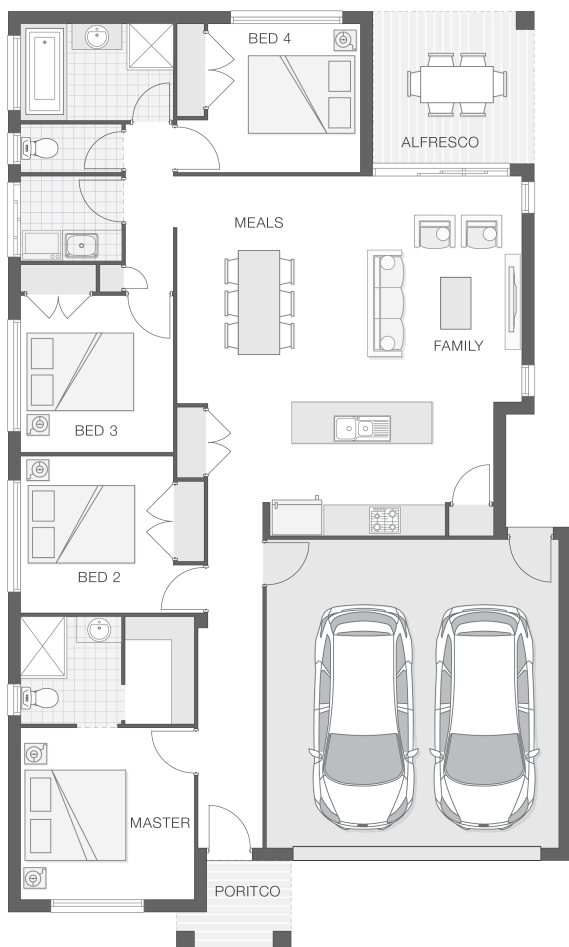


## The Catarina

4 2 2 19 sq

Facade name: Byron

### House Plan:



### LOT #28 @ SCARBOROUGH ESTATE

Scarborough Estate

Address: Scarborough Street, Morisset, 2264



462 m<sup>2</sup>

House and land package price:

From **\$585,203\***

### About package:

\$25,000 GOVERNMENT GRANT ENDING SOON

SIGN UP BEFORE 22 NOVEMBER 2020 and receive a \$5,000 Colour Room Voucher to use towards your home!

#### INCLUSIONS:

- Ultimate Bundle
- Daikin Ducted Air Conditioning
- 20mm Stone benchtops to kitchen and bathroom\*
- Shower niche to bathroom and ensuite
- Australian Custom Made Kitchen Cabinetry and Bathroom Vanities
- Soft Close to Bathroom Cupboards
- Soft Close to Kitchen Drawers and Cupboards
- Westinghouse 900mm Oven and stainless steel appliances
- Concrete Driveway Allowance
- Quality flooring - carpet and tiles
- Flyscreens to all openable windows
- Remote Controlled garage door + 2 remotes
- Slab allowance for Alfresco and Portico
- Tiled Alfresco and Portico
- Site Work Allowance\*
- 2590mm high ceilings
- Clipsal iconic ultramodern range switch gear
- Double GPO's throughout
- Corinthian 1020mm Madison Entry Door
- All connections and services

### ENQUIRE NOW:

Paul James • P: 0418 656 366 • E: [Hawkesbury.bluemountains@adenbrook.com.au](mailto:Hawkesbury.bluemountains@adenbrook.com.au)

Images depicted on this site are for illustration purposes only. Facades and other images of homes and land estates may include optional upgrades, additional fixtures, finishes and home or estate features that are not included in the base price of the home or land package such as landscaping, feature tiling, decking, furnishing, feature lighting, pools, etc. Land estate pricing and plans are subject to developer guidelines and may vary at any time.

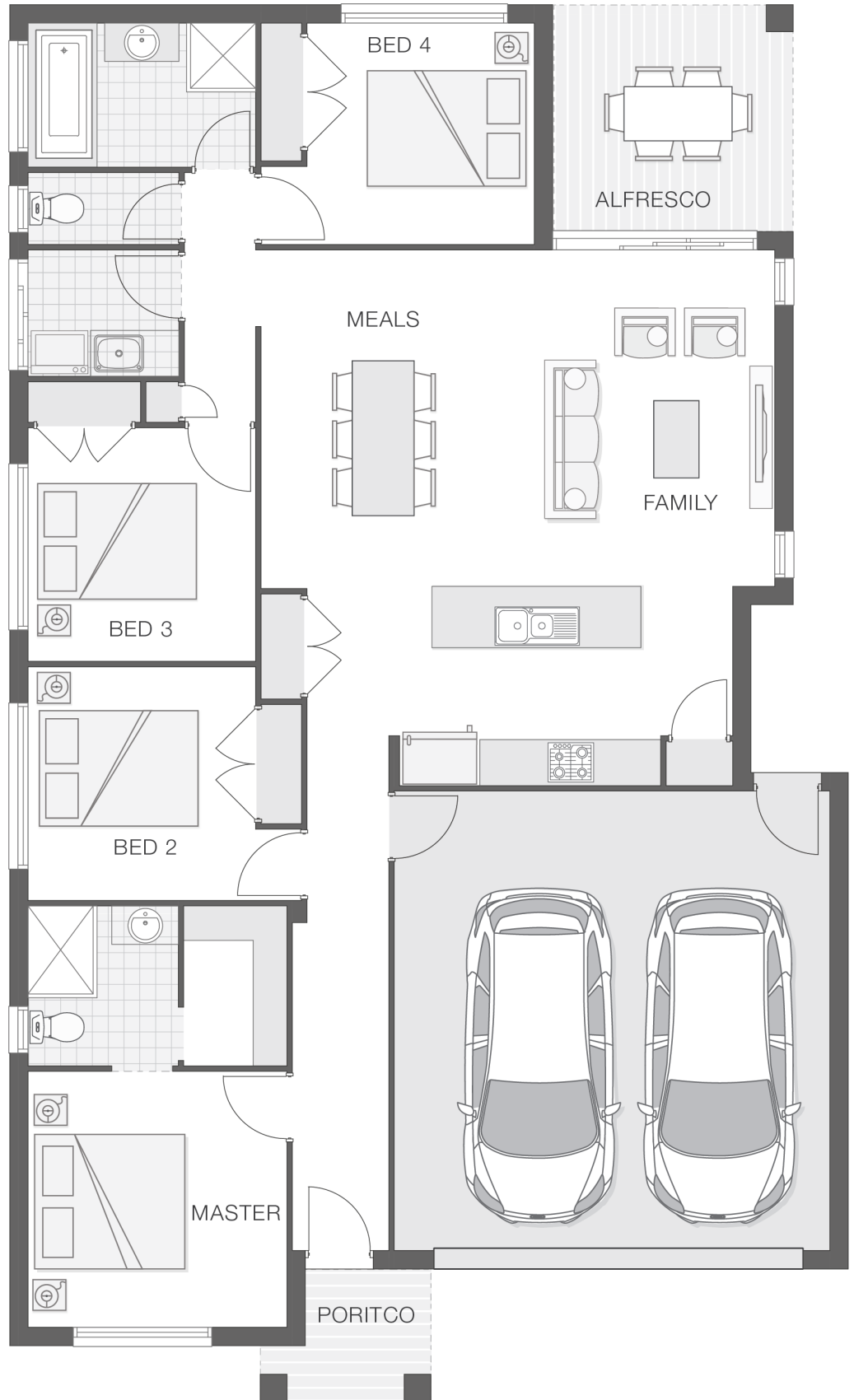
Powered by iBuildNew

adenbrook  
homes

REF: IADENHL508244

## House Features:

- ✓ Ultimate Bundle
- ✓ Floor Coverings
- ✓ 1020mm wide Feature Front Entry Door
- ✓ Ducted Air Conditioning
- ✓ Stone Benchtops to Kitchen and Bathrooms\*
- ✓ Flyscreens
- ✓ Shower Niches to Ensuite & Bathroom
- ✓ Covered Concrete & Tiled Alfresco area
- ✓ Double GPO's Throughout
- ✓ Stainless Steel Appliances
- ✓ 2590mm High Ceilings
- ✓ Basix
- ✓ 3 Phase Underground Power
- ✓ All connections & services
- ✓ Termite Barrier Protection
- ✓ Soft Close Drawers & Doors
- ✓ Concrete Driveway - 45m<sup>2</sup> Allowance
- ✓ Front Landscape Pack - BRONZE to the value of \$4,000



## ENQUIRE NOW:

Paul James • P: 0418 656 366 • E: [Hawkesbury.bluemountains@adenbrook.com.au](mailto:Hawkesbury.bluemountains@adenbrook.com.au)

Images depicted on this site are for illustration purposes only. Facades and other images of homes and land estates may include optional upgrades, additional fixtures, finishes and home or estate features that are not included in the base price of the home or land package such as landscaping, feature tiling, decking, furnishing, feature lighting, pools, etc. Land estate pricing and plans are subject to developer guidelines and may vary at any time.