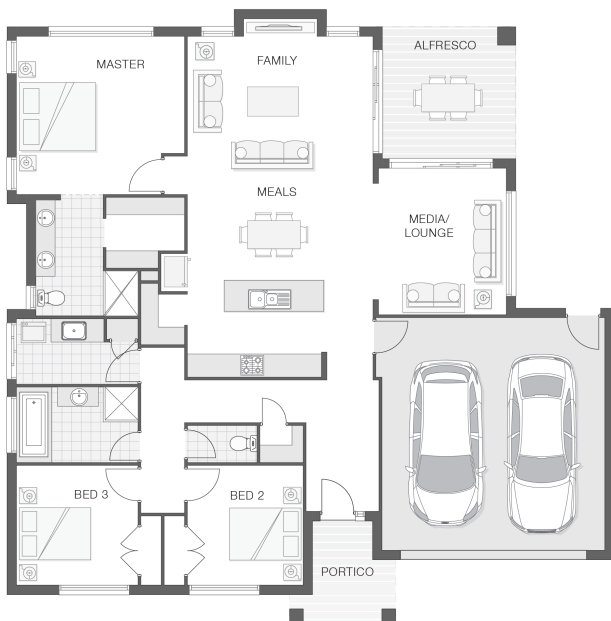


The Austin - B

3 2 2 22 sq

Facade name: Bilson

House Plan:



LOT #114

Ocean Zephyr Estate

Address: Coromandel Court, Dunbogan, 2443



461 m²

House and land package price:

From **\$557,495***

About package:

FIXED TURN-KEY PRICE

Adenbrook Homes Mid North Coast are a locally owned, award-winning builder, backed by the strength of a big brand. We offer turn-key pricing, designed to give you everything you need to move straight in - without the hidden costs.

At the Austin, modern family living is all about space to come together as a family and space for quiet time apart. The open living space combines with a rumpus room and alfresco to create a central living and entertaining area that can be used all year round. The master suite is isolated at the rear of the home for privacy while the bedroom wing at the front of the home has a generous study nook for dedicated work-space. The Austin has all the elements today's family needs and a little more.

Ultimate Bundle Upgrade

- 20mm stone benchtops to kitchen
- BAL (Bushfire Attack Level) Allowance
- Quality Timber Look Flooring, Carpet and Tiles
- 900mm Cooker and Dishwasher
- Rainwater Tank Letterbox and Clothesline
- Concrete Alfresco and Portico areas
- Brushed Concrete Driveway
- Flyscreens
- Remote Controlled Garage Door + 2 remotes
- Site works allowance
- 2570mm high ceilings

ENQUIRE NOW:

Angie Walford • P: 0429626412 • E: portmacquarie.display@adenbrook.com.au

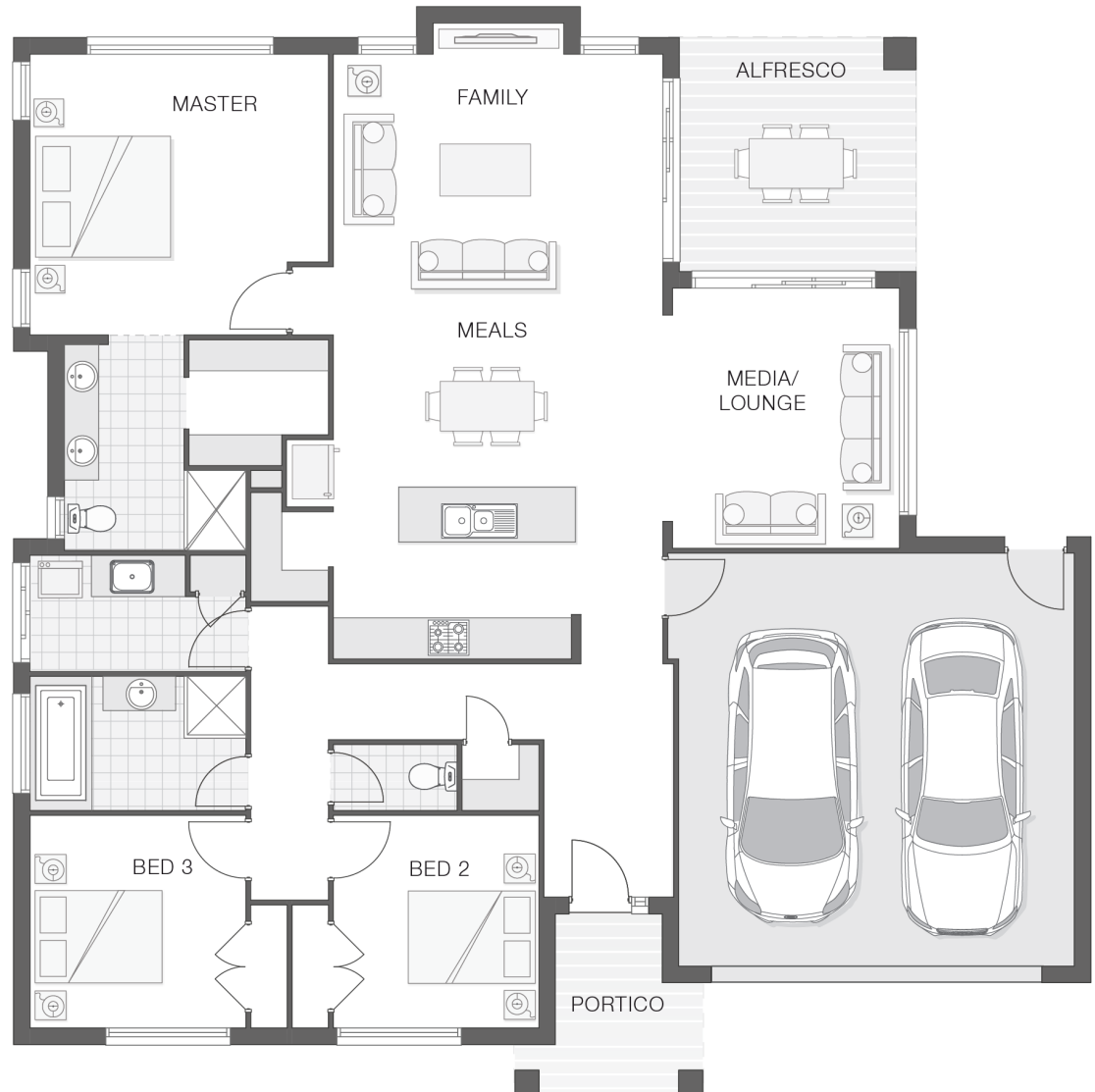
Plans and designs depicted may change with facade selection. All drawings and photographs are for illustrative purposes only. This work is exclusively owned by AB Aust. IP Pty Ltd (ACN 163 575 077) and cannot be reproduced or copied wholly or in part, in any form without permission of AB Aust. IP Pty Ltd. Any prices in this document include GST, are subject to change without notice, relate only to the base house price and standard inclusions. Site costs will vary depending on site conditions, local Council requirements, estate guidelines and any other statutory requirements applicable. Adenbrook Homes does not have a hold on the block, this package is subject to land availability and you securing the land through the land agent directly. For more information please speak to one of our friendly New Home Consultants.

House Features:

- ✓ 20mm stone benchtops to kitchen
- ✓ Ultimate upgrade bundle
- ✓ 1200mm Hinged Wideline Aluminium Entry Door
- ✓ Builders Grant \$15K
- ✓ 2570mm high ceilings
- ✓ Letterbox and Clothesline
- ✓ Flyscreens
- ✓ Concrete Alfresco and Portico areas
- ✓ Dishwasher
- ✓ BAL (Bushfire Attack Level) Allowance
- ✓ 3000L rainwater tank with submersible pump
- ✓ 900mm Cooker and Dishwasher
- ✓ Quality Timber Look Flooring, Carpet and Tiles
- ✓ Remote Controlled Garage Door + 2 remotes
- ✓ Brushed Concrete Driveway

Estate Features:

- ✓ Minutes from Laurieton town centre
- ✓ Local Parks
- ✓ Minutes away from stunning beaches
- ✓ Local cafes, boutiques and grocers
- ✓ Great fishing spots
- ✓ 40 minutes from Port Macquarie



ENQUIRE NOW:

Angie Walford • P: 0429626412 • E: portmacquarie.display@adenbrook.com.au

Plans and designs depicted may change with facade selection. All drawings and photographs are for illustrative purposes only. This work is exclusively owned by AB Aust. IP Pty Ltd (ACN 163 575 077) and cannot be reproduced or copied wholly or in part, in any form without permission of AB Aust. IP Pty Ltd. Any prices in this document include GST, are subject to change without notice, relate only to the base house price and standard inclusions. Site costs will vary depending on site conditions, local Council requirements, estate guidelines and any other statutory requirements applicable. Adenbrook Homes does not have a hold on the block, this package is subject to land availability and you securing the land through the land agent directly. For more information please speak to one of our friendly New Home Consultants.