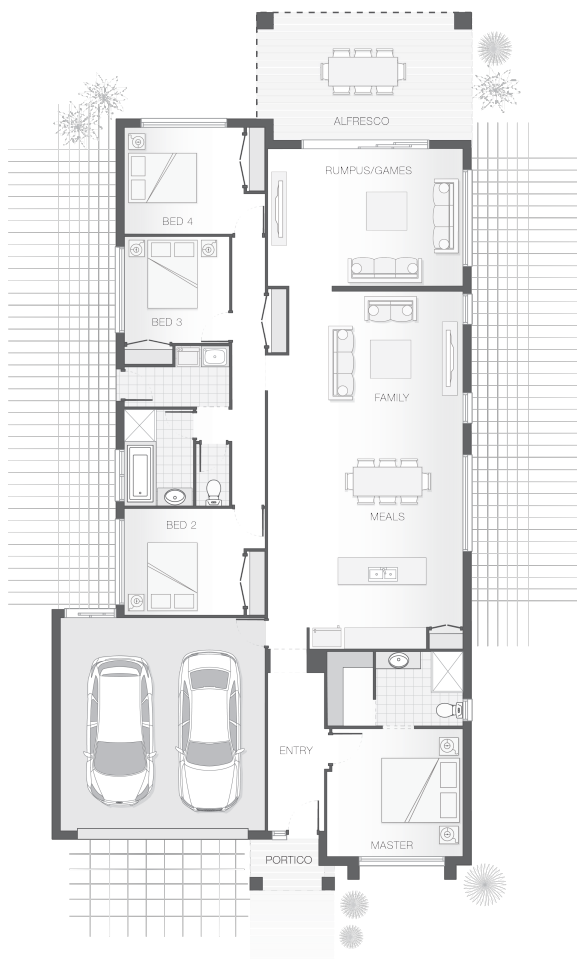




House Plan:



LOT #0273

Foreshore, Coomera

Address: Albert Street, Coomera, 4209



420 m²

The Amity - C - Gold Coast

Package Price From

4 2 2 239 m²

\$616,310*

About package:

Brought to you by award winning builder Adenbrook Homes, this home & land package is the perfect way to get into your first home.

Location wise it offers everything for growing families with close proximity to Coomera East Village, Westfield Coomera, Foxwell State Secondary College, Coomera Rivers State School & Coomera Train Station all whilst being part of a thriving masterplanned community consisting of large open parklands and dedicated walking & bike trails.

This Amity C home design truly compliments the 420sqm block with plenty of space for the whole family.

For a limited time this home & land package comes with a load of extras as well as our value packed Ultimate Bundle Promo. Some features Include:

- Exposed Aggregate Concrete Driveway
- Carpet & Tiles Throughout
- 2590mm Ceiling Height
- 20mm Stone Benchtops to Kitchen & Bathrooms
- H2 Treated Pine Frame
- 600mm Stainless Steel Westinghouse Appliances
- LED Downlights
- NBN Connection & TV antenna
- Sponge Finish Render to Entire Home
- Upgraded 1020 Entry Door

ENQUIRE NOW:

Con Sgouros • P: 0404 308 208 • E: goldcoast@adenbrook.com.au

Plans and designs depicted may change with facade selection. All drawings and photographs are for illustrative purposes only. This work is exclusively owned by AB Aust. IP Pty Ltd (ACN 163 575 077) and cannot be reproduced or copied wholly or in part, in any form without permission of AB Aust. IP Pty Ltd. Any prices in this document include GST, are subject to change without notice, relate only to the base house price and standard inclusions. Site costs will vary depending on site conditions, local Council requirements, estate guidelines and any other statutory requirements applicable. Adenbrook Homes does not have a hold on the block, this package is subject to land availability and you securing the land through the land agent directly. For more information please speak to one of our friendly New Home Consultants.