





The Capestone

 4  2  2  26 sq

Facade name: Kayman

House Plan:

LOT #28 RANGE STREET

Redbank Estate

Address: Range Street, North Richmond, 2754



796 m²

House and land package price:

From **\$874,827***

About package:

INCLUSIONS:

- Ultimate Bundle Package
- Daikin Ducted Air Conditioning
- 20mm Stone benchtops to kitchen, main bathroom and ensuite
- Shower niche to main bathroom and ensuite
- Westinghouse 900mm oven and stainless steel appliances
- Australian made kitchen and bathroom cabinetry
- Concrete Driveway Allowance
- Quality timber look flooring, carpet and tiles
- Flyscreens to all openable windows
- Remote Controlled garage door + 2 remotes
- Slab provision for Alfresco and Portico
- Tiled Alfresco and Portico
- Letterbox
- Clothesline
- Plantation shutters to front windows
- Site Work Allowance*
- 2590mm high ceilings (lower level only)
- Clipsal iconic ultramodern range switch gear
- Double GPO's throughout
- Corinthian 1020mm Madison Entry Door
- All connections and services
- H2 90mm treated pine frames
- BASIX
- Kayman facade included

ENQUIRE NOW:

Paul James • P: 0418 656 366 • E: Hawkesbury.bluemountains@adenbrook.com.au

Images depicted on this site are for illustration purposes only. Facades and other images of homes and land estates may include optional upgrades, additional fixtures, finishes and home or estate features that are not included in the base price of the home or land package such as landscaping, feature tiling, decking, furnishing, feature lighting, pools, etc. Land estate pricing and plans are subject to developer guidelines and may vary at any time.

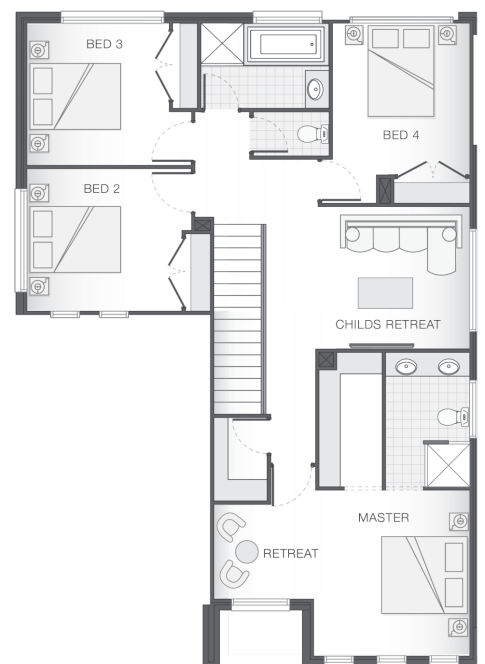
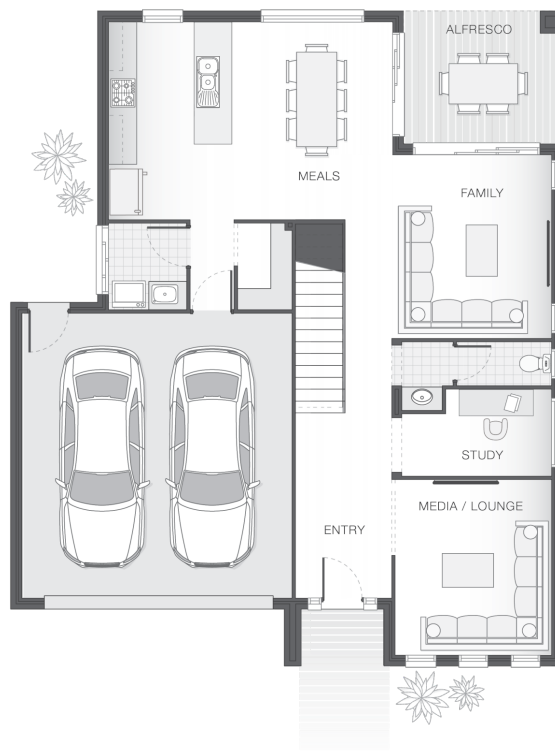
Powered by  iBuildNew

adenbrook
homes

REF: IADENHL508656

House Features:

- ✓ Floor Coverings
- ✓ 1020mm wide Feature Front Entry Door
- ✓ Concrete Driveway - 45m² Allowance
- ✓ Ducted Air Conditioning
- ✓ Stone Benchtops to Kitchen and Bathrooms*
- ✓ Flyscreens
- ✓ Shower Niches to Ensuite & Bathroom
- ✓ Covered Concrete & Tiled Alfresco area
- ✓ Double GPO's Throughout
- ✓ Stainless Steel Appliances
- ✓ Basix
- ✓ 3 Phase Underground Power
- ✓ All connections & services
- ✓ Termite Barrier Protection
- ✓ Soft Close Drawers & Doors
- ✓ 2590mm High Ceilings - Ground Floor Only
- ✓ Plantation Shutters to front of house



ENQUIRE NOW:

Paul James • P: 0418 656 366 • E: Hawkesbury.bluemountains@adenbrook.com.au

Images depicted on this site are for illustration purposes only. Facades and other images of homes and land estates may include optional upgrades, additional fixtures, finishes and home or estate features that are not included in the base price of the home or land package such as landscaping, feature tiling, decking, furnishing, feature lighting, pools, etc. Land estate pricing and plans are subject to developer guidelines and may vary at any time.