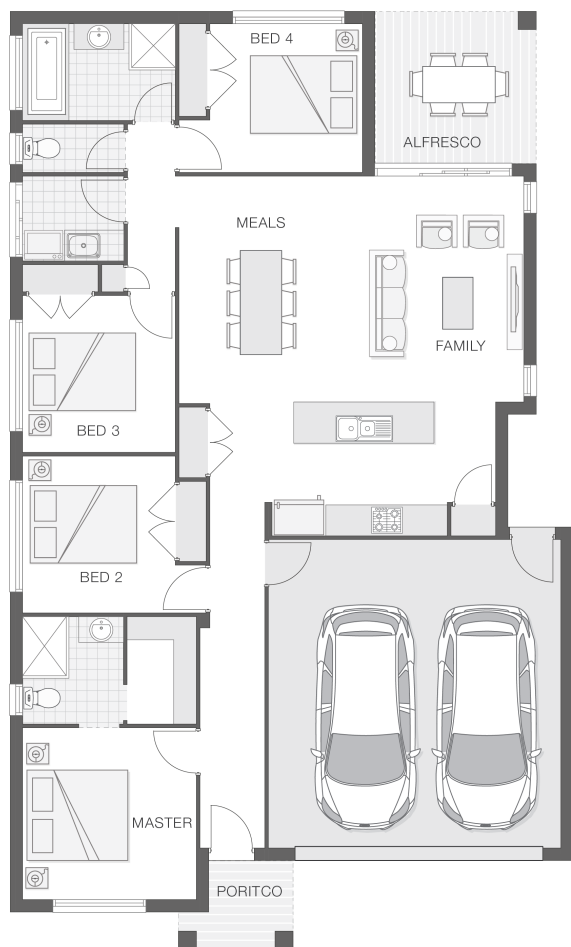


The Catarina

4 2 2 19 sq

Facade name: Karin

House Plan:



LOT #LOT 6 @ SUNBURST ESTATE

Sunburst Estate

Address: Diesel Close, Teralba, 2284



398 m²

House and land package price:

From **\$598,909***

About package:

\$25,000 GOVERNMENT GRANT ENDING SOON

INCLUSIONS:

- Ultimate Bundle
- Daikin Ducted Air Conditioning
- 20mm Stone benchtops to kitchen and bathroom*
- Shower niche to bathroom and ensuite
- Australian Custom Made Kitchen Cabinetry and Bathroom Vanities
- Soft Close to Bathroom Cupboards
- Soft Close to Kitchen Drawers and Cupboards
- Westinghouse 900mm Oven and stainless steel appliances
- Concrete Driveway Allowance
- Quality flooring - carpet and tiles
- Flyscreens to all openable windows
- Remote Controlled garage door + 2 remotes
- Slab allowance for Alfresco and Portico
- Tiled Alfresco and Portico
- Site Work Allowance*
- 2590mm high ceilings
- Clipsal iconic ultramodern range switch gear
- Double GPO's throughout
- Corinthian 1020mm Madison Entry Door
- All connections and services
- H2 90mm treated pine frames
- BASIX including water tank
- Front Landscape Package BRONZE to value of \$4,000

ENQUIRE NOW:

Paul James • P: 0418 656 366 • E: Hawkesbury.bluemountains@adenbrook.com.au

Images depicted on this site are for illustration purposes only. Facades and other images of homes and land estates may include optional upgrades, additional fixtures, finishes and home or estate features that are not included in the base price of the home or land package such as landscaping, feature tiling, decking, furnishing, feature lighting, pools, etc. Land estate pricing and plans are subject to developer guidelines and may vary at any time.

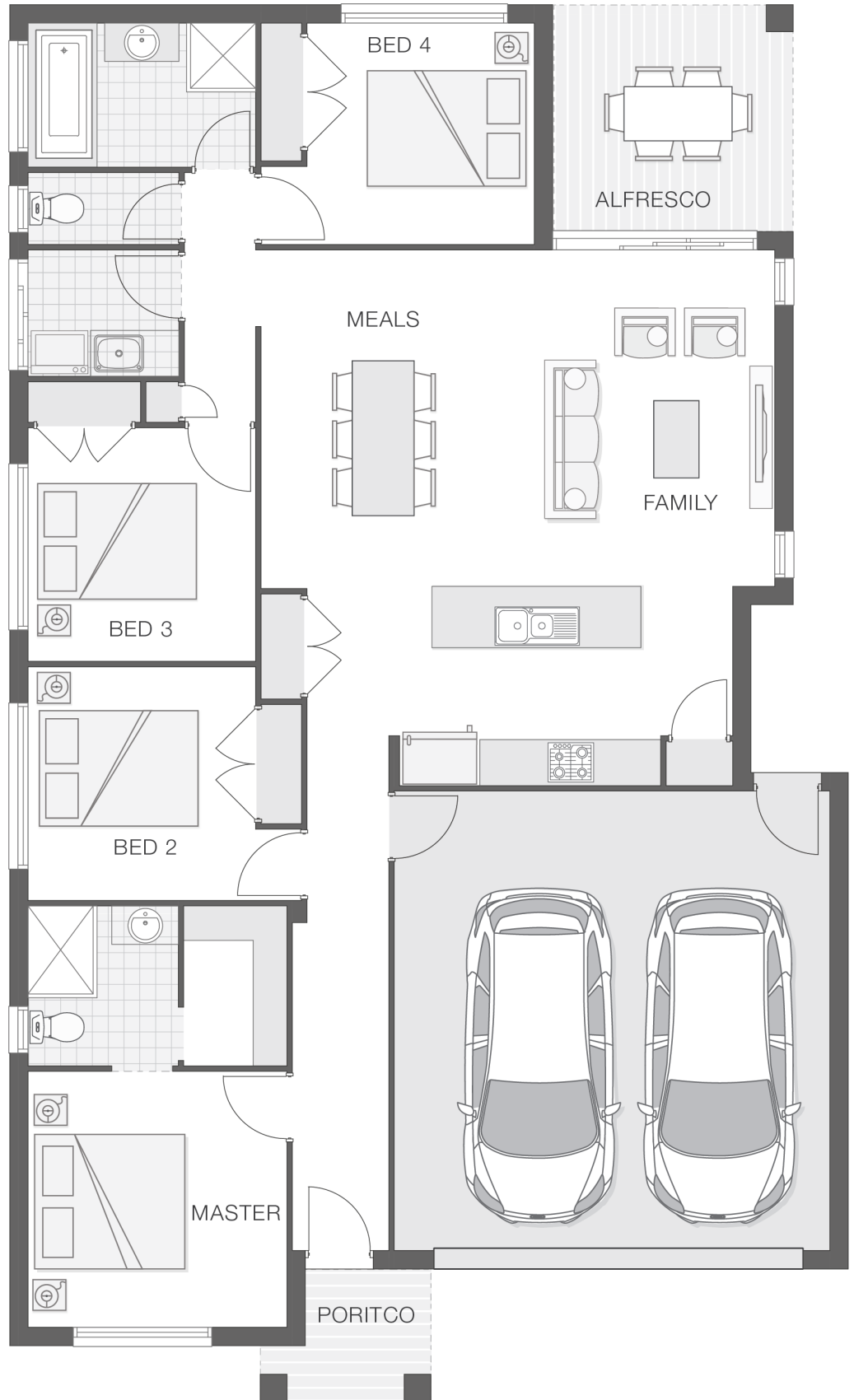
Powered by iBuildNew

adenbrook
homes

REF: IADENHL508662

House Features:

- ✓ Ultimate Bundle
- ✓ Floor Coverings
- ✓ 1020mm wide Feature Front Entry Door
- ✓ Concrete Driveway - 45m² Allowance
- ✓ Ducted Air Conditioning
- ✓ Stone Benchtops to Kitchen and Bathrooms*
- ✓ Flyscreens
- ✓ Shower Niches to Ensuite & Bathroom
- ✓ Covered Concrete & Tiled Alfresco area
- ✓ Double GPO's Throughout
- ✓ Stainless Steel Appliances
- ✓ 2590mm High Ceilings
- ✓ Basix
- ✓ 3 Phase Underground Power
- ✓ All connections & services
- ✓ Termite Barrier Protection
- ✓ Front Landscape Pack - BRONZE to the value of \$4,000



ENQUIRE NOW:

Paul James • P: 0418 656 366 • E: Hawkesbury.bluemountains@adenbrook.com.au

Images depicted on this site are for illustration purposes only. Facades and other images of homes and land estates may include optional upgrades, additional fixtures, finishes and home or estate features that are not included in the base price of the home or land package such as landscaping, feature tiling, decking, furnishing, feature lighting, pools, etc. Land estate pricing and plans are subject to developer guidelines and may vary at any time.