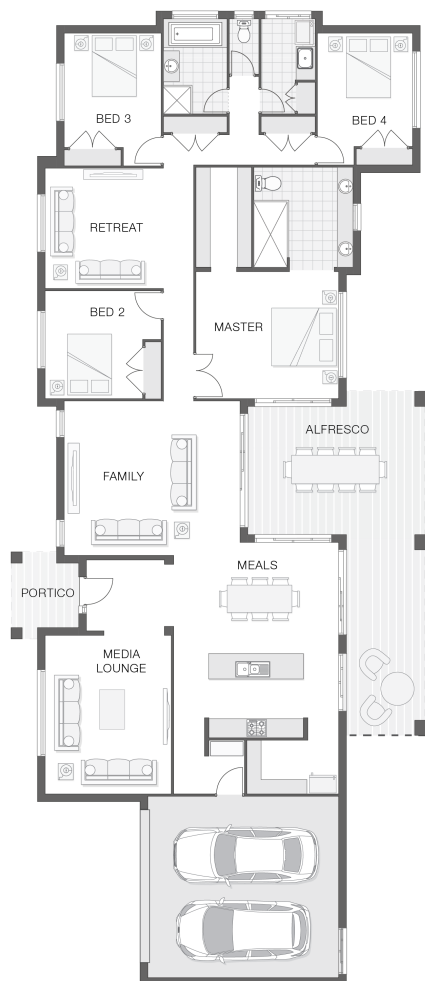


# The Beacon - A

4 2 2 34 sq

Facade name: Bexley

## House Plan:



## LOT #20

Wattlebird Estate

Address: Wattlebird Estate, Nambucca Heads, 2448



9995.735 m<sup>2</sup>

House and land package price:

From **\$646,390\***

## About package:

Government stimulus package of \$25,000 CASH BONUS AVAILABLE NOW!

Wattlebird Park Estate provides a rural lifestyle, yet close enough to beaches and wide open spaces to enjoy it all. perfect for the Beacon home design which offers a lavish and luxurious acreage property lifestyle that many can only dream about with an expansive frontage to enjoy the lovely views on your property. Wattlebird Estate is only a 25 minute drive to Coffs Harbour and a 60 minute drive to Port Macquarie.

What's included in your beautifully finished, high quality new home

- All Council Fees and Approvals with M Class Soil
- Full sarking wrap to treated timber frames and roof
- Insulation to walls and ceiling, flyscreens
- Carpet / tiles or vinyl flooring
- Recessed wet areas
- Westinghouse appliances
- Alfresco with recessed stacking sliding doors
- Drop-in laundry tub with cabinet and clothesline
- Full electrical layout with downlights and feature lighting and TV aerial
- Water tank, mailbox and concrete driveway

ULTIMATE UPGRADE BUNDLE FOR ONLY \$4900

EXTERNAL / INTERNAL

- Hume Savoy 1200mm hinged entry door

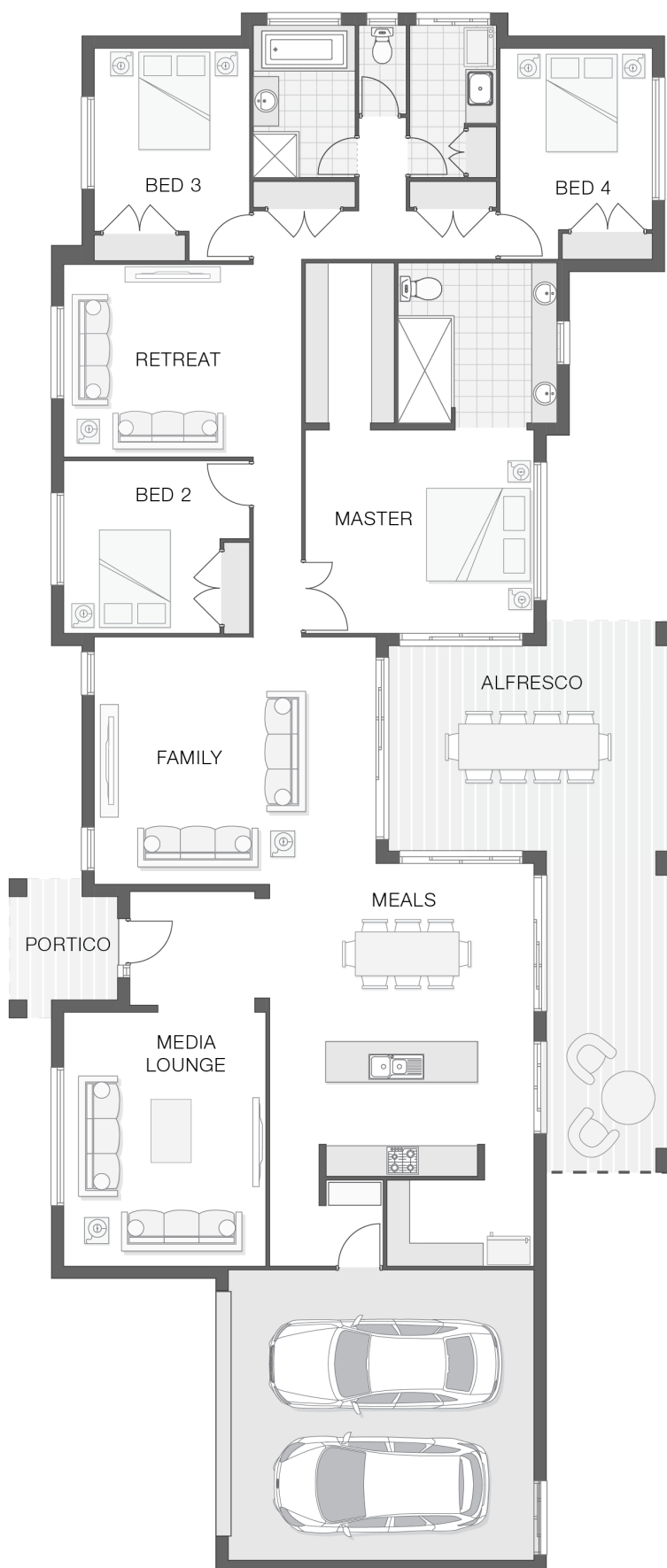
## ENQUIRE NOW:

Niki Whelan • P: 0412 797 925 • E: [coffs.display@adenbrook.com.au](mailto:coffs.display@adenbrook.com.au)

Plans and designs depicted may change with facade selection. All drawings and photographs are for illustrative purposes only. This work is exclusively owned by AB Aust. IP Pty Ltd (ACN 163 575 077) and cannot be reproduced or copied wholly or in part, in any form without permission of AB Aust. IP Pty Ltd. Any prices in this document include GST, are subject to change without notice, relate only to the base house price and standard inclusions. Site costs will vary depending on site conditions, local Council requirements, estate guidelines and any other statutory requirements applicable. Adenbrook Homes does not have a hold on the block, this package is subject to land availability and you securing the land through the land agent directly. For more information please speak to one of our friendly New Home Consultants.

### House Features:

- ✓ 20mm stone benchtops to kitchen
- ✓ 900mm Cooker and Dishwasher
- ✓ Carpet and Tile or Vinyl floors; modern architraves 67mm x 18mm
- ✓ Three (3) coat Haymes low toxic internal paint system
- ✓ 3000L rainwater tank with submersible pump
- ✓ Guaranteed build time, fixed price and no hidden costs
- ✓ Double lock-up garage with remotes, mailbox, and clothesline
- ✓ Builders Grant \$15K
- ✓ First Home Buyer Grant \$10K
- ✓ Ultimate upgrade bundle
- ✓ 3 included facade options and complimentary window changes
- ✓ Brick exterior, concrete tile roof, 45sqm grey concrete driveway
- ✓ Termite resistant "blue pine" framing and trusses and physical termite barriers
- ✓ M class soil and 500mm fall over building platform



### ENQUIRE NOW:

Niki Whelan • P: 0412 797 925 • E: [coffs.display@adenbrook.com.au](mailto:coffs.display@adenbrook.com.au)

Plans and designs depicted may change with facade selection. All drawings and photographs are for illustrative purposes only. This work is exclusively owned by AB Aust. IP Pty Ltd (ACN 163 575 077) and cannot be reproduced or copied wholly or in part, in any form without permission of AB Aust. IP Pty Ltd. Any prices in this document include GST, are subject to change without notice, relate only to the base house price and standard inclusions. Site costs will vary depending on site conditions, local Council requirements, estate guidelines and any other statutory requirements applicable. Adenbrook Homes does not have a hold on the block, this package is subject to land availability and you securing the land through the land agent directly. For more information please speak to one of our friendly New Home Consultants.