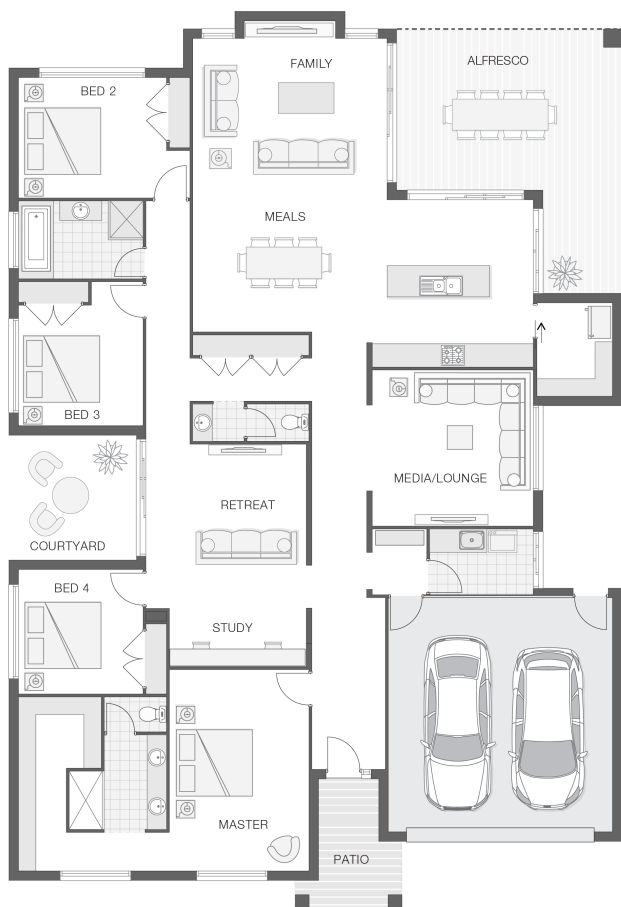


## The Penn - A

4 2 2 34 sq

Facade name: Lacie

### House Plan:



### LOT #9

Ridge Land Estate

Address: Ridge Land Estate, Macksville, 2447



932 m<sup>2</sup>

House and land package price:

From **\$570,680\***

### About package:

FREE OFFER 'Run on Sun 21' – HARNESS THE POWER OF SOLAR ENERGY AND SAVE!

The Penn home design is functional and fashionable and provides a clever layout conducive for family living, relaxing and entertaining. Perfect for living at Ridge Land Estate. The unique location of this land offers rare opportunity to enjoy the very best of life on the Mid North Coast of New South Wales.

Government stimulus package of \$25,000 CASH BONUS AVAILABLE NOW!

What's included in your beautifully finished, high quality new home

- All Council Fees and Approvals with M Class Soil
- Full sarking wrap to treated timber frames and roof
- Insulation to walls and ceiling, flyscreens
- Carpet / tiles or vinyl flooring
- Recessed wet areas
- Westinghouse appliances
- Alfresco with recessed stacking sliding doors
- Drop-in laundry tub with cabinet and clothesline
- Full electrical layout with downlights and feature lighting and TV aerial
- Water tank, mailbox and concrete driveway

ULTIMATE UPGRADE BUNDLE FOR ONLY \$4900

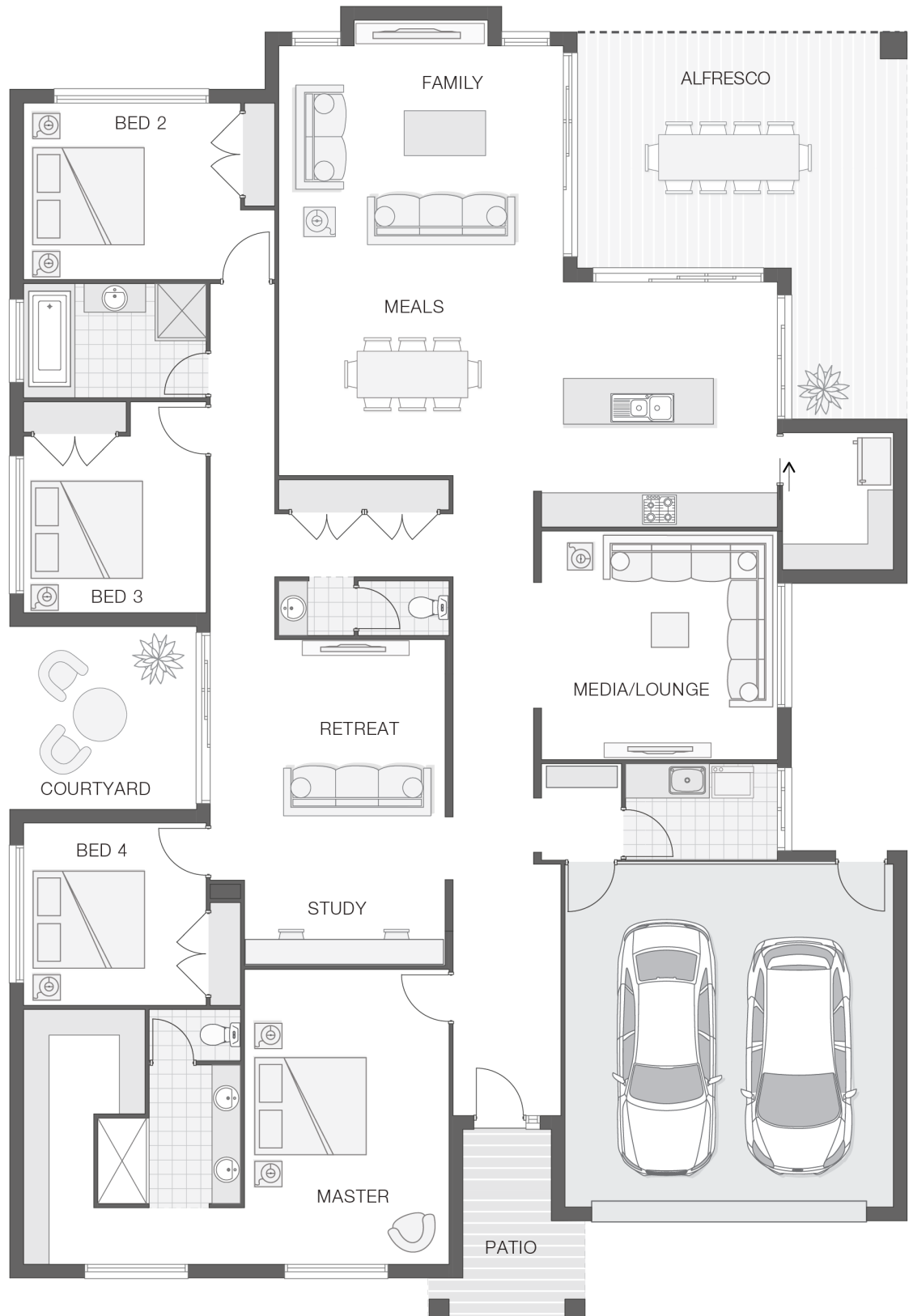
### ENQUIRE NOW:

Niki Whelan • P: 0412 797 925 • E: [coffs.display@adenbrook.com.au](mailto:coffs.display@adenbrook.com.au)

Plans and designs depicted may change with facade selection. All drawings and photographs are for illustrative purposes only. This work is exclusively owned by AB Aust. IP Pty Ltd (ACN 163 575 077) and cannot be reproduced or copied wholly or in part, in any form without permission of AB Aust. IP Pty Ltd. Any prices in this document include GST, are subject to change without notice, relate only to the base house price and standard inclusions. Site costs will vary depending on site conditions, local Council requirements, estate guidelines and any other statutory requirements applicable. Adenbrook Homes does not have a hold on the block, this package is subject to land availability and you securing the land through the land agent directly. For more information please speak to one of our friendly New Home Consultants.

### House Features:

- ✓ 20mm stone benchtops to kitchen
- ✓ 900mm Cooker and Dishwasher
- ✓ Carpet and Tile or Vinyl floors; modern architraves 67mm x 18mm
- ✓ Three (3) coat Haymes low toxic internal paint system
- ✓ 3000L rainwater tank with submersible pump
- ✓ Termite resistant "blue pine" framing and trusses and physical termite barriers
- ✓ Flyscreens
- ✓ Concrete Alfresco and Portico areas
- ✓ Letterbox and Clothesline
- ✓ Site works allowance
- ✓ 2570mm high ceilings
- ✓ Builders Grant \$15K
- ✓ 3 included facade options and complimentary window changes
- ✓ Double lock-up garage with remotes, mailbox, and clothesline
- ✓ M class soil and 500mm fall over building platform
- ✓ Dishwasher
- ✓ Brick exterior, concrete tile roof, 45sqm grey concrete driveway
- ✓ Ultimate upgrade bundle



### ENQUIRE NOW:

Niki Whelan • P: 0412 797 925 • E: [coffs.display@adenbrook.com.au](mailto:coffs.display@adenbrook.com.au)

Plans and designs depicted may change with facade selection. All drawings and photographs are for illustrative purposes only. This work is exclusively owned by AB Aust. IP Pty Ltd (ACN 163 575 077) and cannot be reproduced or copied wholly or in part, in any form without permission of AB Aust. IP Pty Ltd. Any prices in this document include GST, are subject to change without notice, relate only to the base house price and standard inclusions. Site costs will vary depending on site conditions, local Council requirements, estate guidelines and any other statutory requirements applicable. Adenbrook Homes does not have a hold on the block, this package is subject to land availability and you securing the land through the land agent directly. For more information please speak to one of our friendly New Home Consultants.