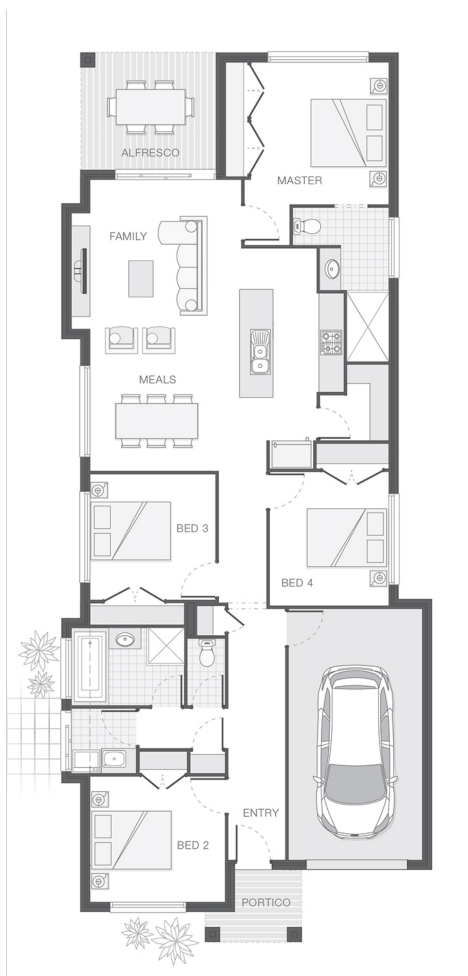




House Plan:



LOT #212

Brookhaven

Address: Goshawk Court, Bahrs Scrub, 4207



300 m²

The Macleay - Gold Coast

Package Price From

4 2 1 164 m²

\$399,000*

About package:

Brookhaven Estate Home & Land Package Under 400k.

Brought to you by award winning builder Adenbrook Homes, this home & land package is perfect starter!!!

Location wise it offers everything for growing families with close proximity to Beenleigh train station, major shopping retailers such as Aldi, Coles, Bunnings Warehouse and Woolworths as well as easy access to the M1 for connectivity to the Gold Coast and Brisbane. Within a lush natural landscape and featuring community spaces such as viewing platforms, fitness nodes, walking trails and local parks, here, families can truly thrive.

Set on a low maintenance 300 sqm. block the Macleay design is sure to impress with enough space for the growing family consisting of 4 bedrooms, 2 bathrooms and single garage.

For a limited time this package comes with our value packed "Ultimate Bundle" full of features as well as some extra items such as:

- Concrete Driveway
- H2 Treated Pine Frames
- 2590 mm Ceiling Height
- NBN connection & TV antenna
- Internal Floor Coverings (tiles & carpet)
- Stone Benchtops to Kitchen & Bathrooms
- Stainless Steel Westinghouse Appliances

ENQUIRE NOW:

Barrie Kluver • P: 0425516519 • E: goldcoast@adenbrook.com.au

Plans and designs depicted may change with facade selection. All drawings and photographs are for illustrative purposes only. This work is exclusively owned by AB Aust. IP Pty Ltd (ACN 163 575 077) and cannot be reproduced or copied wholly or in part, in any form without permission of AB Aust. IP Pty Ltd. Any prices in this document include GST, are subject to change without notice, relate only to the base house price and standard inclusions. Site costs will vary depending on site conditions, local Council requirements, estate guidelines and any other statutory requirements applicable. Adenbrook Homes does not have a hold on the block, this package is subject to land availability and you securing the land through the land agent directly. For more information please speak to one of our friendly New Home Consultants.