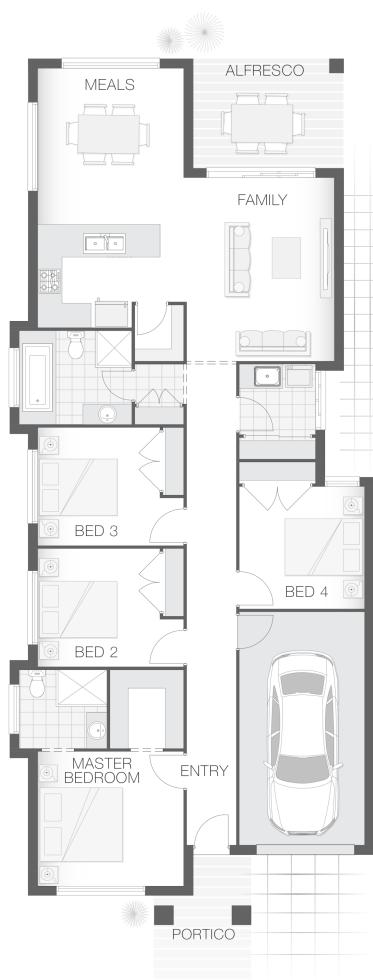


## The Opal

4 2 1 18 sq

Facade name: Byron

### House Plan:



### LOT #1116

Willowdale

Address: Honest Avenue, Denham Court, 2565



280 m<sup>2</sup>

House and land package price:

From **\$656,900\***

### About package:

This Adenbrook Home & Land package is located in the highly sought-after estate of Willowdale.

Set on a 280m<sup>2</sup> block of land, we have coupled it with our Opal home design. The land is due to register Mid 2021.

The Opal home design is generous and purposeful in layout. With a separate master retreat at the front of the home, four additional bedrooms and a large entertainment area at the rear of the home, there is room for everyone.

The sleek and slim design ensures its suitability for the compact suburban lot while ensuring a focus on spaciousness and privacy.

This House and Land Package includes:-

- \* Standard Site Costs and Standard Basix Requirements
- \* Builders range tiles & carpet throughout home
- \* Tiling to the Alfresco and Portico
- \* Coloured Concrete Driveway
- \* Daikin Reverse Cycle Ducted Air Con.
- \* Caroma Bathroom Accessories
- \* PLUS our fantastic Ultimate Upgrade Bundle!

Contact us today to find out how we can help you create your dream house and land package. You can also view our Orion and Sapphire designs on display at 6 Coral Circuit, Leppington - contact our team to book your inspection today.

### ENQUIRE NOW:

Bec Hoyer • P: 0417427799 • E: [sydneywest.southwest@adenbrook.com.au](mailto:sydneywest.southwest@adenbrook.com.au)

adenbrook  
homes

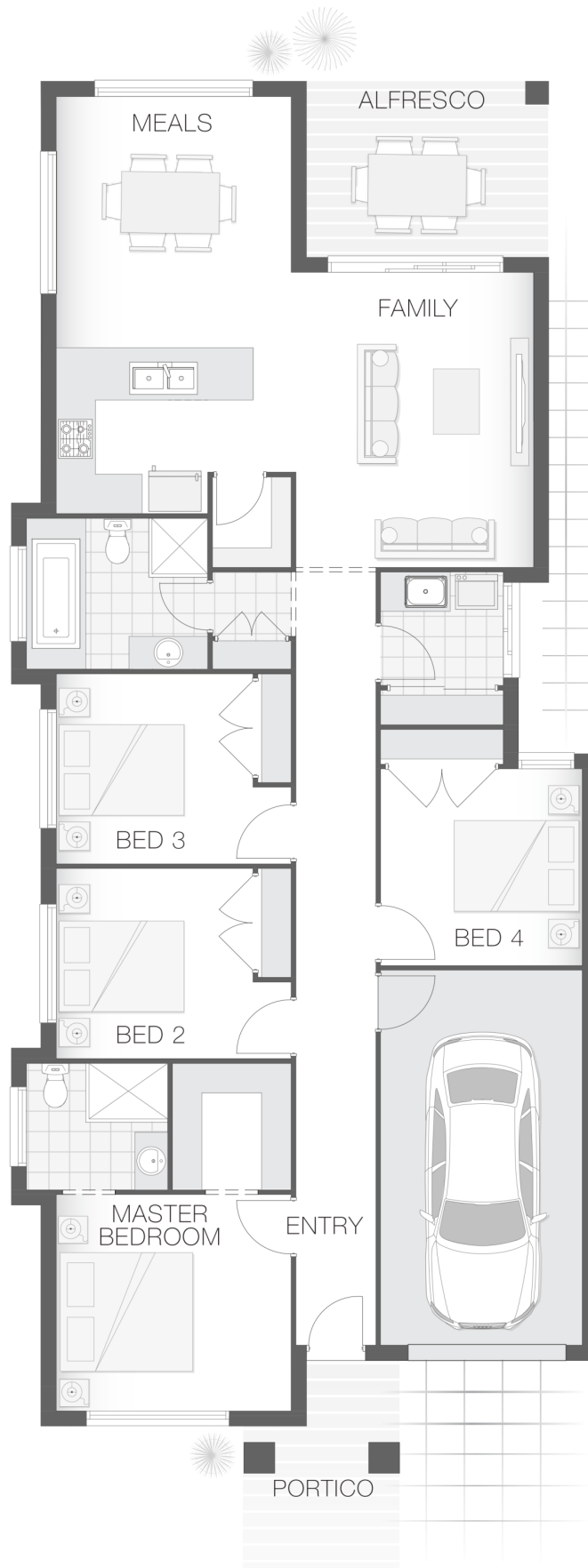
Images depicted on this site are for illustration purposes only. Facades and other images of homes and land estates may include optional upgrades, additional fixtures, finishes and home or estate features that are not included in the base price of the home or land package such as landscaping, feature tiling, decking, furnishing, feature lighting, pools, etc. Land estate pricing and plans are subject to developer guidelines and may vary at any time.

### House Features:

- ✓ Tiling to the Alfresco and Portico
- ✓ 1020mm Entry Door
- ✓ Shower Niches
- ✓ R2 Walls and R4 Ceiling Insulation
- ✓ Soft-close drawers and doors to Kitchen and Bathrooms
- ✓ 2590mm Ceiling Upgrade
- ✓ Standard Site Costs and Standard Basix Requirements
- ✓ Coloured Concrete Driveway
- ✓ 20mm Stone benchtop to the kitchen, bathroom and Ensuite.
- ✓ 2x Gas Points
- ✓ Flyscreens To all openable windows
- ✓ Much More...
- ✓ Builders range tiles & carpet throughout home
- ✓ Daiken Reverse Cycle Ducted Air Conditioning
- ✓ Westinghouse Cooktop, Oven and Dishwasher

### Estate Features:

- ✓ Leppington Public School
- ✓ Willowdale Shopping Centre
- ✓ Leppington Railway Station



### ENQUIRE NOW:

Bec Hoyer • P: 0417427799 • E: [sydneywest.southwest@adenbrook.com.au](mailto:sydneywest.southwest@adenbrook.com.au)

Images depicted on this site are for illustration purposes only. Facades and other images of homes and land estates may include optional upgrades, additional fixtures, finishes and home or estate features that are not included in the base price of the home or land package such as landscaping, feature tiling, decking, furnishing, feature lighting, pools, etc. Land estate pricing and plans are subject to developer guidelines and may vary at any time.