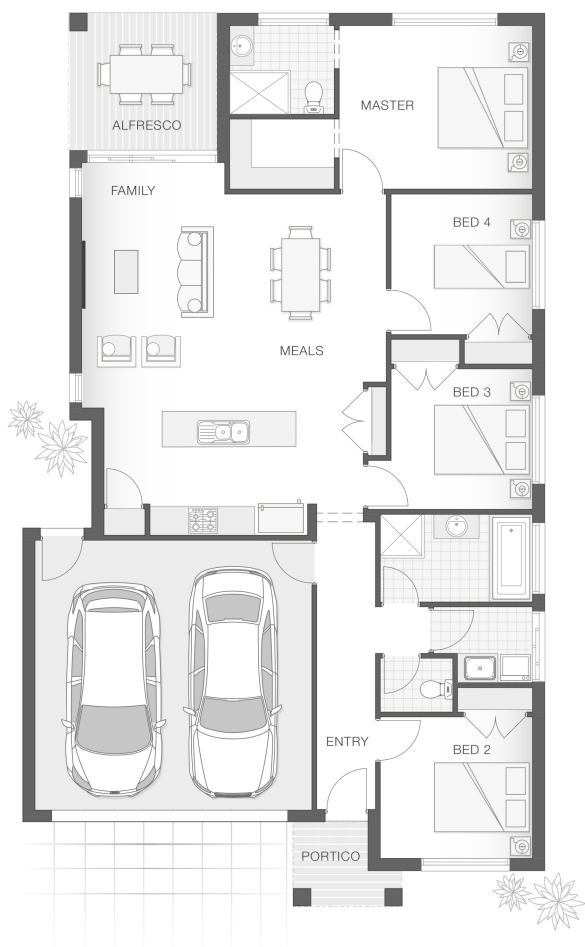


The Brampton - Option Z

4 2 2 19 sq

Facade name: Pallara

House Plan:



LOT #15

Greenfields Estate

Address: Proposed Road, Tahmoor, 2573



457 m²

House and land package price:

From **\$589,900***

About package:

Adenbrook Homes South West Sydney are a locally owned and operated builder, backed by an award-winning franchise. We offer this amazing house and land package in Greenfields Estate, Tahmoor on a 457sqm lot. Land due to register August 2021.

The Brampton home design is clever, comfortable and classy. The open plan design lends to interactive family living with open plan living, dining and alfresco entertaining space, while the bedrooms all achieve good separation and privacy.

The master retreat has a well-appointed ensuite and walk-in-robe and is generous in size. This home offers the best in style and comfort for the smaller family.

What's included in your Adenbrook Home:

- Standard Site Costs and Standard Basix Requirements
- Builders range tiles & carpet throughout home
- Tiling to the Alfresco and Portico
- Coloured Concrete Driveway
- Daiken Reverse Cycle Ducted Air Con.
- Caroma Bathroom Accessories

Contact us today to find out how we can help you create your dream house and land package. You can also view our Orion and Sapphire designs on display at 6 Coral Circuit, Leppington - contact our team to book your inspection today.

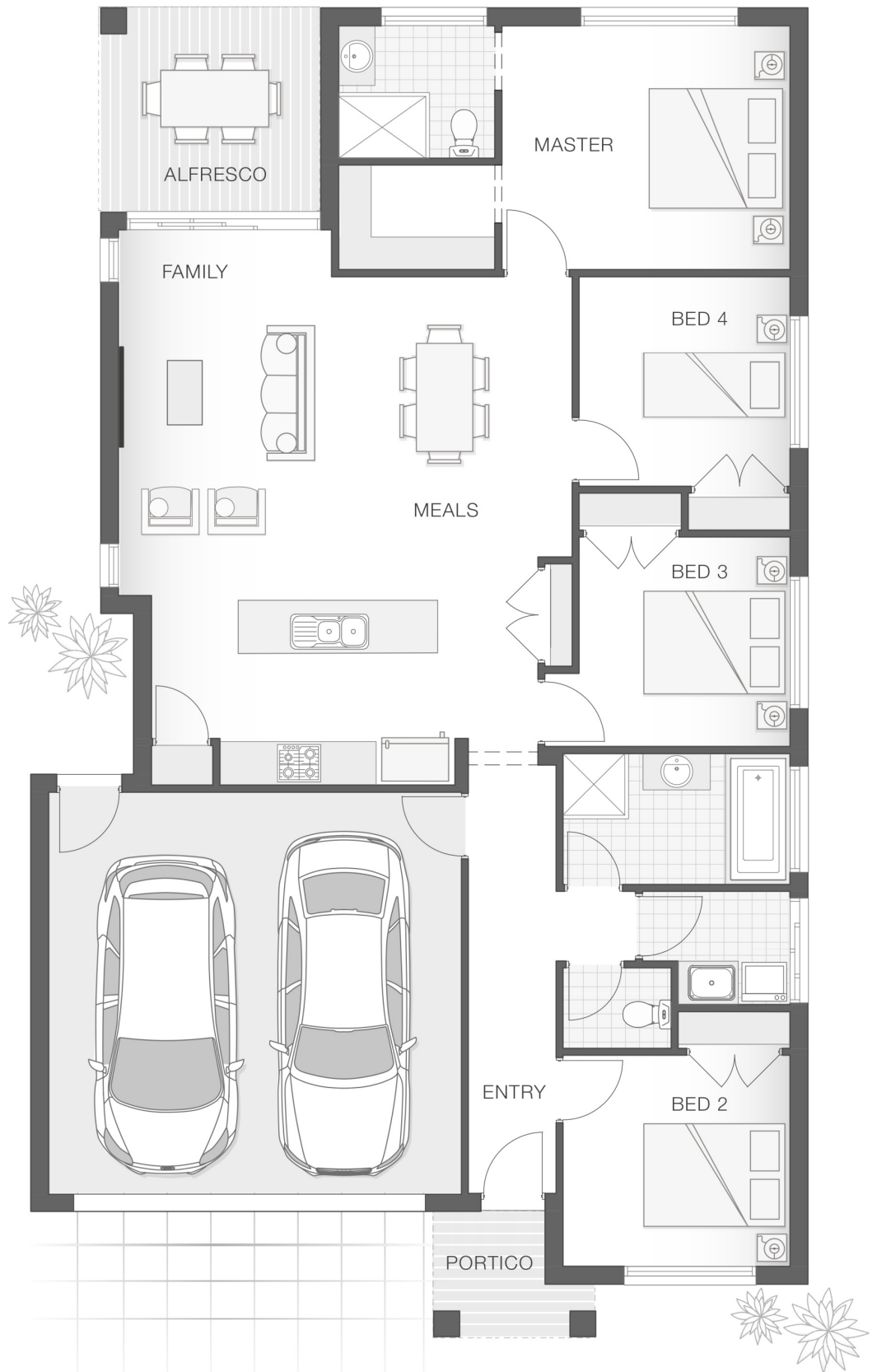
ENQUIRE NOW:

Adenbrook Homes • P: 0406 248 064 • E: sydneywest.southwest@adenbrook.com.au

Images depicted on this site are for illustration purposes only. Facades and other images of homes and land estates may include optional upgrades, additional fixtures, finishes and home or estate features that are not included in the base price of the home or land package such as landscaping, feature tiling, decking, furnishing, feature lighting, pools, etc. Land estate pricing and plans are subject to developer guidelines and may vary at any time.

House Features:

- ✓ Coloured Concrete Driveway
- ✓ Tiling to the Alfresco and Portico
- ✓ 1020mm Entry Door
- ✓ Shower Niches
- ✓ R2 Walls and R4 Ceiling Insulation
- ✓ Soft-close drawers and doors to Kitchen and Bathrooms
- ✓ 2590mm Ceiling Upgrade
- ✓ 20mm Stone benchtop to the kitchen, bathroom and Ensuite.
- ✓ 2x Gas Points
- ✓ Flyscreens To all openable windows
- ✓ Much More...
- ✓ Builders range tiles & carpet throughout home
- ✓ Daiken Reverse Cycle Ducted Air Conditioning
- ✓ Westinghouse Cooktop, Oven and Dishwasher



ENQUIRE NOW:

Adenbrook Homes • P: 0406 248 064 • E: sydneywest.southwest@adenbrook.com.au

Images depicted on this site are for illustration purposes only. Facades and other images of homes and land estates may include optional upgrades, additional fixtures, finishes and home or estate features that are not included in the base price of the home or land package such as landscaping, feature tiling, decking, furnishing, feature lighting, pools, etc. Land estate pricing and plans are subject to developer guidelines and may vary at any time.