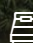
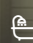


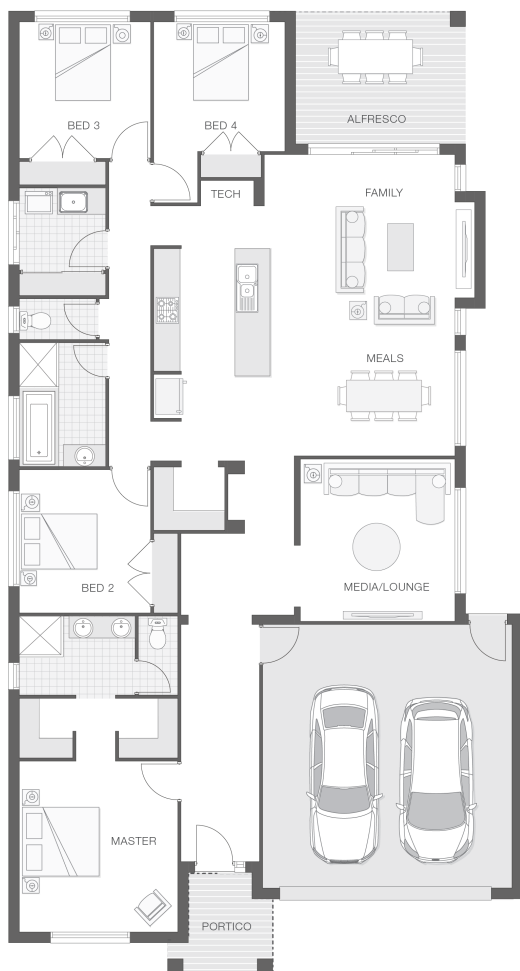


The Fraser - B

 4  2  2  25 sq

Facade name: Penrose

House Plan:



LOT #TBA STAGE 4

Greenview Estate

Address: Proposed Road, Horsley, 2530



457.5 m²

House and land package price:

From **\$688,900***

About package:

This Adenbrook Home & Land package is located in the highly sought-after estate of Greenview Estate, Horsley. Set on a 457m² block of land, we have coupled it with our Fraser B home design. Registration approximate late 2021.

The Fraser home design is both intelligent and practical in layout and features. The deliberate placement of separate living and entertainment zones allows space for a touch of luxury in the form of a secluded master retreat with ensuite and walk-in-robe, while indoor and outdoor living flows effortlessly throughout the home.

This House and Land Package includes:-

- * Standard Site Costs and Standard Basix Requirements
- * Builders range laminate & carpet throughout home
- * Tiling to the Alfresco and Portico
- * Coloured Concrete Driveway
- * Daiken Reverse Cycle Ducted Air Con.
- * Caroma Bathroom Accessories
- * PLUS our fantastic Ultimate Upgrade Bundle!

Contact us today to find out how we can help you create your dream house and land package. You can also view our Isla A on display at 10 Whistler Street, Wongawilli - contact our team to book your inspection today

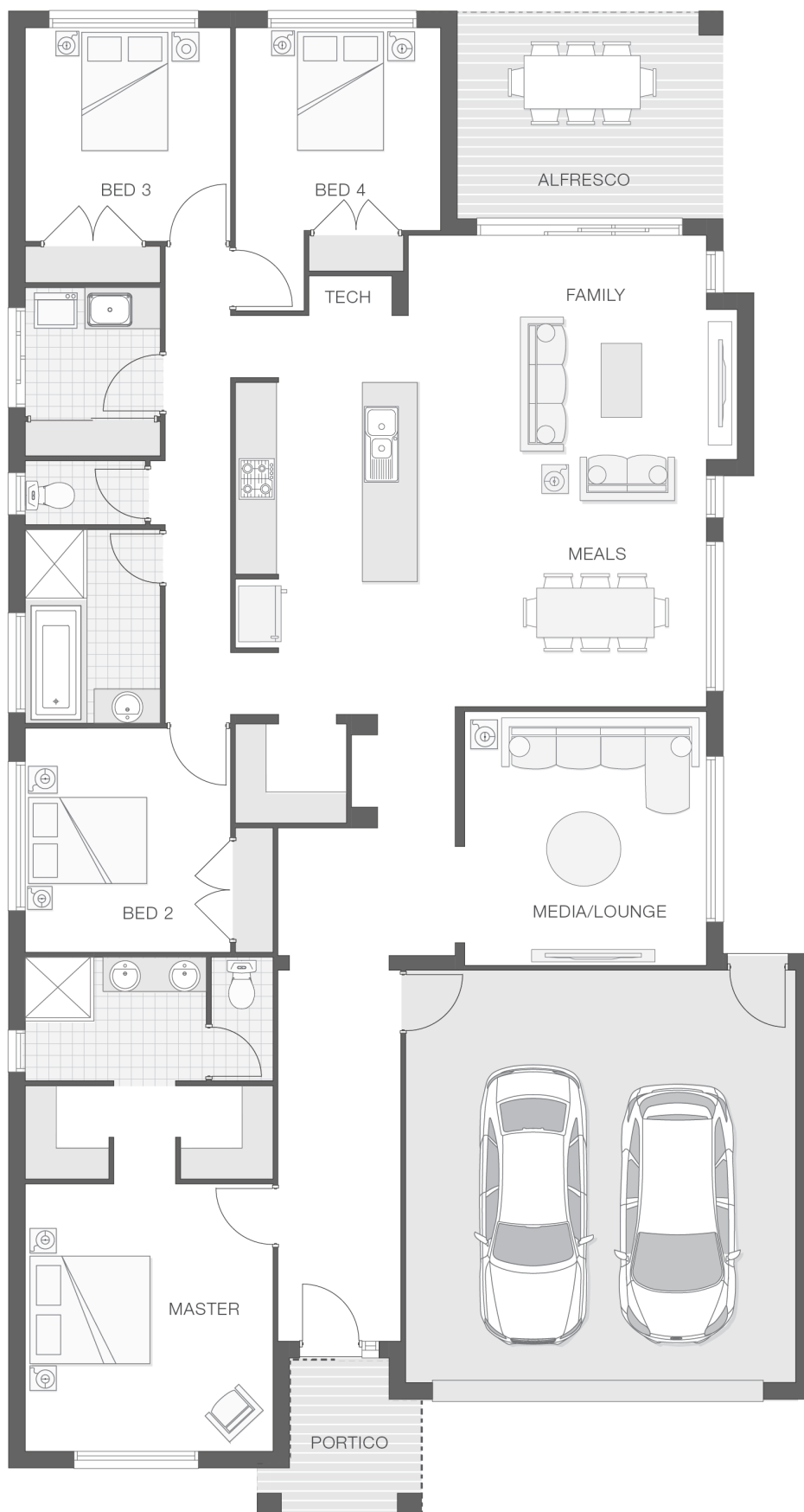
ENQUIRE NOW:

Jillian Stokes • P: 0415 301 615 • E: greaterwollongong@adenbrook.com.au

Plans and designs depicted may change with facade selection. All drawings and photographs are for illustrative purposes only. This work is exclusively owned by AB Aust. IP Pty Ltd (ACN 163 575 077) and cannot be reproduced or copied wholly or in part, in any form without permission of AB Aust. IP Pty Ltd. Any prices in this document include GST, are subject to change without notice, relate only to the base house price and standard inclusions. Site costs will vary depending on site conditions, local Council requirements, estate guidelines and any other statutory requirements applicable. Adenbrook Homes does not have a hold on the block, this package is subject to land availability and you securing the land through the land agent directly. For more information please speak to one of our friendly New Home Consultants.

House Features:

- ✓ Tiling to the Alfresco and Portico
- ✓ 1020mm Entry Door
- ✓ Shower Niches
- ✓ R2 Walls and R4 Ceiling Insulation
- ✓ Soft-close drawers and doors to Kitchen and Bathrooms
- ✓ Builders Range Carpet and Laminate Throughout
- ✓ Much More...
- ✓ 2590mm Ceiling Upgrade to the Ground Floor Only
- ✓ Clipsal Iconic Ultramodern range Switch Gear
- ✓ Monier Atura low-profile roof tiles
- ✓ Westinghouse Cooktop, Oven and Dishwasher
- ✓ Daiken Reverse Cycle Ducted Air Conditioning
- ✓ Standard Site Costs and Standard Basix Requirements
- ✓ Coloured Concrete Driveway
- ✓ 20mm Stone benchtop to the kitchen, bathroom and Ensuite.
- ✓ 2x Gas Points
- ✓ Flyscreens To all openable windows



ENQUIRE NOW:

Jillian Stokes • P: 0415 301 615 • E: greaterwollongong@adenbrook.com.au

Plans and designs depicted may change with facade selection. All drawings and photographs are for illustrative purposes only. This work is exclusively owned by AB Aust. IP Pty Ltd (ACN 163 575 077) and cannot be reproduced or copied wholly or in part, in any form without permission of AB Aust. IP Pty Ltd. Any prices in this document include GST, are subject to change without notice, relate only to the base house price and standard inclusions. Site costs will vary depending on site conditions, local Council requirements, estate guidelines and any other statutory requirements applicable. Adenbrook Homes does not have a hold on the block, this package is subject to land availability and you securing the land through the land agent directly. For more information please speak to one of our friendly New Home Consultants.