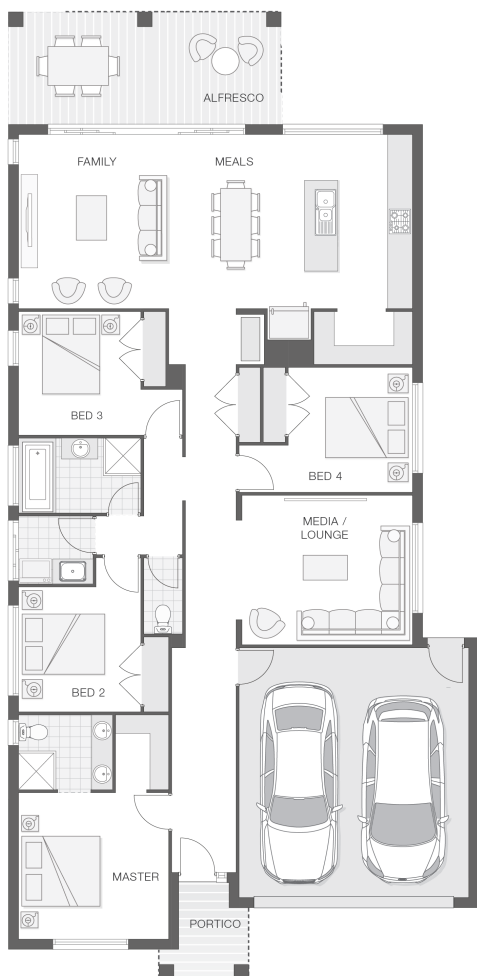


# The Isla - C

4 2 2 24 sq

Facade name: Haven

## House Plan:



## LOT #114

Saltwater Links

Address: Athena Parade, South West Rocks, 2431



536 m<sup>2</sup>

House and land package price:

From **\$518,700\***

## About package:

### FIXED TURN-KEY PRICE

Adenbrook Homes Mid North Coast are a locally owned, award-winning builder, backed by the strength of a big brand. We offer turn-key pricing, designed to give you everything you need to move straight in - without the hidden costs.

The Isla home design on this generous 536m2 block in Saltwater Links Estate is sophisticated and stylish, offering all the modern features that you need to relax, entertain and enjoy! The outdoor entertaining area runs the width of the home and flawlessly integrates with the family room, meals area and generous kitchen complete with butler's pantry creating an oversized entertainers delight. The master retreat with ensuite and walk-in-robe boasts great separation while the central living zone is dedicated to additional bedrooms and the media room.

### What is included in the price?

- Quality Timber Look Flooring, Carpet and Tiles
- Site works allowance, including creating split level design
- Flyscreens
- Rainwater Tank
- Remote Controlled Garage Door + 2 remotes
- Concrete Alfresco and Portico areas
- Letterbox and Clothesline

## ENQUIRE NOW:

Angie Walford • P: 0429626412 • E: portmacquarie.display@adenbrook.com.au

Plans and designs depicted may change with facade selection. All drawings and photographs are for illustrative purposes only. This work is exclusively owned by AB Aust. IP Pty Ltd (ACN 163 575 077) and cannot be reproduced or copied wholly or in part, in any form without permission of AB Aust. IP Pty Ltd. Any prices in this document include GST, are subject to change without notice, relate only to the base house price and standard inclusions. Site costs will vary depending on site conditions, local Council requirements, estate guidelines and any other statutory requirements applicable. Adenbrook Homes does not have a hold on the block, this package is subject to land availability and you securing the land through the land agent directly. For more information please speak to one of our friendly New Home Consultants.

### House Features:

- ✓ 900mm Cooker and Dishwasher
- ✓ 20mm stone benchtops to kitchen
- ✓ Site works allowance
- ✓ 2570mm high ceilings
- ✓ Ultimate upgrade bundle
- ✓ 1200mm Hinged Wideline Aluminium Entry Door
- ✓ Remote Controlled Garage Door + 2 remotes
- ✓ Letterbox and Clothesline
- ✓ Flyscreens
- ✓ Concrete Alfresco and Portico areas
- ✓ BAL (Bushfire Attack Level) Allowance
- ✓ Dishwasher
- ✓ Quality Timber Look Flooring, Carpet and Tiles
- ✓ Brushed Concrete Driveway

### Estate Features:

- ✓ Close to beaches
- ✓ Only half an hour from Coffs Harbour
- ✓ Nearby medical and shopping facilities
- ✓ Quiet location
- ✓ Flat, easy access land
- ✓ Flat, accessible land



### ENQUIRE NOW:

Angie Walford • P: 0429626412 • E: [portmacquarie.display@adenbrook.com.au](mailto:portmacquarie.display@adenbrook.com.au)

Plans and designs depicted may change with facade selection. All drawings and photographs are for illustrative purposes only. This work is exclusively owned by AB Aust. IP Pty Ltd (ACN 163 575 077) and cannot be reproduced or copied wholly or in part, in any form without permission of AB Aust. IP Pty Ltd. Any prices in this document include GST, are subject to change without notice, relate only to the base house price and standard inclusions. Site costs will vary depending on site conditions, local Council requirements, estate guidelines and any other statutory requirements applicable. Adenbrook Homes does not have a hold on the block, this package is subject to land availability and you securing the land through the land agent directly. For more information please speak to one of our friendly New Home Consultants.