

The Capestone

4 2 2 26 sq

Facade name: Kayman

House Plan:

LOT #163

Rainbow Beach Estate

Address: Rainbow Beach Estate, Lake Cathie, 2445



478.2 m²

House and land package price:

From **\$640,365***

About package:

Adenbrook Homes Mid North Coast are a locally owned and operated builder, backed by an award winning franchise. We offer turn-key pricing, designed to give you everything you need to move straight in - without the hidden costs.

The Capestone home design paired on this 478.2m2 block in Rainbow Beach Estate is the perfect balance between entertaining and relaxation. The lower level offers multiple entertainment zones including an alfresco and indoor dining area, and a separate media room. The upper level features the master retreat with ensuite and walk-in-robe creating a private sanctuary away from the main living area of the home. Also on the upper floor are the other bedrooms and children's retreat, ensuring there is room for the entire family.

Ultimate Bundle Upgrade:

- Hume Savoy 1200mm hinged entry door
- 2570mm Ceiling height
- Square set ceilings to living area
- 20mm stone benchtops to kitchen
- Westinghouse 90cm upright cooker
- Westinghouse dishwasher
- Alder tapware package to kitchen and laundry
- Ambition fine line basins to ensuite and bathroom
- Alder tapware package to ensuite and bathroom
- Shower niche to ensuite and bathroom

ENQUIRE NOW:

Angie Walford • P: 0429626412 • E: portmacquarie.display@adenbrook.com.au

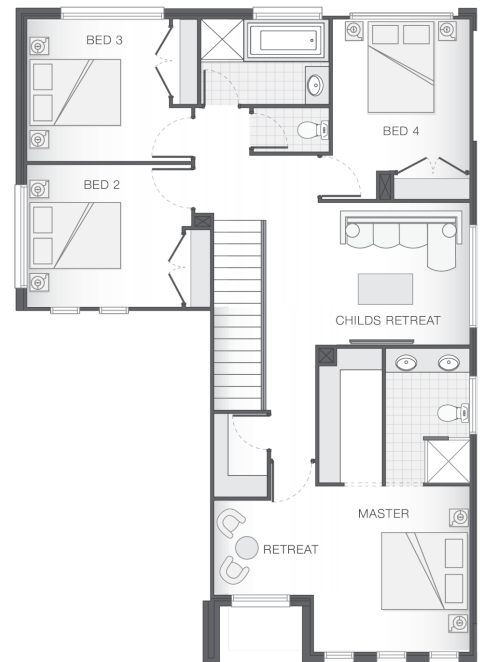
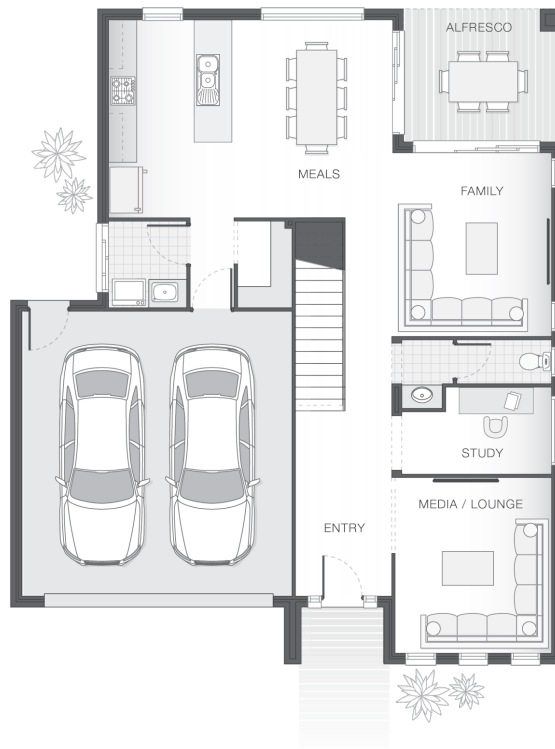
Plans and designs depicted may change with facade selection. All drawings and photographs are for illustrative purposes only. This work is exclusively owned by AB Aust. IP Pty Ltd (ACN 163 575 077) and cannot be reproduced or copied wholly or in part, in any form without permission of AB Aust. IP Pty Ltd. Any prices in this document include GST, are subject to change without notice, relate only to the base house price and standard inclusions. Site costs will vary depending on site conditions, local Council requirements, estate guidelines and any other statutory requirements applicable. Adenbrook Homes does not have a hold on the block, this package is subject to land availability and you securing the land through the land agent directly. For more information please speak to one of our friendly New Home Consultants.

House Features:

- ✓ First Home Buyer Grant \$10K
- ✓ Grey water connection
- ✓ 2570mm high ceilings
- ✓ Builders Grant \$15K
- ✓ Site works allowance
- ✓ Ultimate upgrade bundle
- ✓ 1200mm Hinged Wideline Aluminium Entry Door
- ✓ Letterbox and Clothesline
- ✓ Remote Controlled Garage Door + 2 remotes
- ✓ BAL (Bushfire Attack Level) Allowance
- ✓ Dishwasher
- ✓ 3000L rainwater tank with submersible pump

Estate Features:

- ✓ Close to beach
- ✓ Short drive to Lake Cathie shopping village
- ✓ Close to school
- ✓ 20 minutes from Port Macquarie
- ✓ Located close to Medical Center



ENQUIRE NOW:

Angie Walford • P: 0429626412 • E: portmacquarie.display@adenbrook.com.au

Plans and designs depicted may change with facade selection. All drawings and photographs are for illustrative purposes only. This work is exclusively owned by AB Aust. IP Pty Ltd (ACN 163 575 077) and cannot be reproduced or copied wholly or in part, in any form without permission of AB Aust. IP Pty Ltd. Any prices in this document include GST, are subject to change without notice, relate only to the base house price and standard inclusions. Site costs will vary depending on site conditions, local Council requirements, estate guidelines and any other statutory requirements applicable. Adenbrook Homes does not have a hold on the block, this package is subject to land availability and you securing the land through the land agent directly. For more information please speak to one of our friendly New Home Consultants.