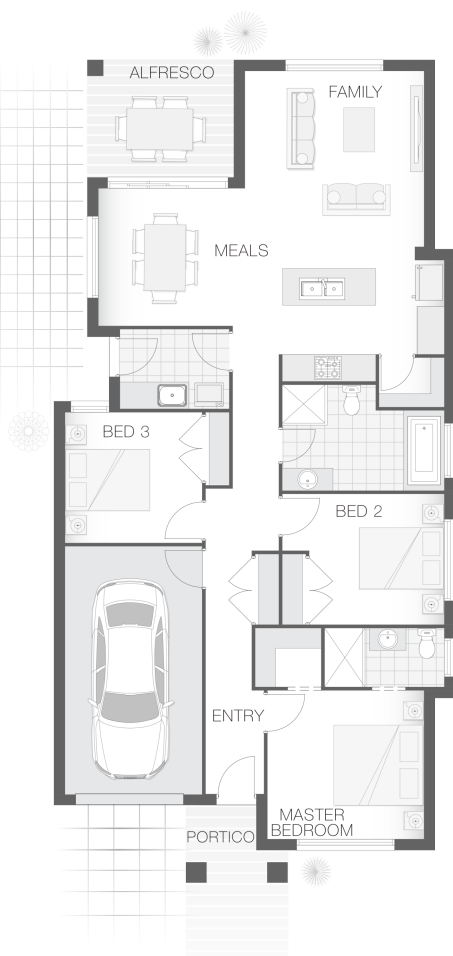


# The Destiny

3 2 1 16 sq

Facade name: Byron

## House Plan:



## LOT #2067

Albert Park

Address: Tinline Street, Box Hill (NSW), 2765



309.8 m<sup>2</sup>

House and land package price:

From **\$739,254\***

## About package:

Set on a 309.2m<sup>2</sup> block of land, we have coupled it with our Destiny home design.

### UPGRADED INCLUSION LIST:

- \* Builders range tiles & carpet throughout home
- \* Tiling to the Alfresco and Portico
- \* Coloured Concrete Driveway
- \* Daiken Reverse Cycle Ducted Air Con.
- \* Caroma Bathroom Accessories
- \* PLUS our fantastic Ultimate Upgrade Bundle!

- Our ULTIMATE BUNDLE PACKAGE has fantastic inclusions of
- \* 2590mm ceiling heights throughout (ground floor only to double storey homes)
- \* shower Niche to Bathroom and Ensuite
- \* Monier Atura Low Profile Roof Tiles
- \* 1020mm Entry Door
- \* Flyscreens to all openable windows
- \* 20mm Stone benchtop to the kitchen, bathroom and Ensuite.
- \* Westinghouse Dishwasher, just to name a few

Don't miss out, enquire today to find out how to make this dream a reality.

CONTACT US ON 0410 116 413 or 0450 076 039

## ENQUIRE NOW:

Shriti Sinha • P: 0410116413 • E: sydneywest.southwest@adenbrook.com.au

Images depicted on this site are for illustration purposes only. Facades and other images of homes and land estates may include optional upgrades, additional fixtures, finishes and home or estate features that are not included in the base price of the home or land package such as landscaping, feature tiling, decking, furnishing, feature lighting, pools, etc. Land estate pricing and plans are subject to developer guidelines and may vary at any time.

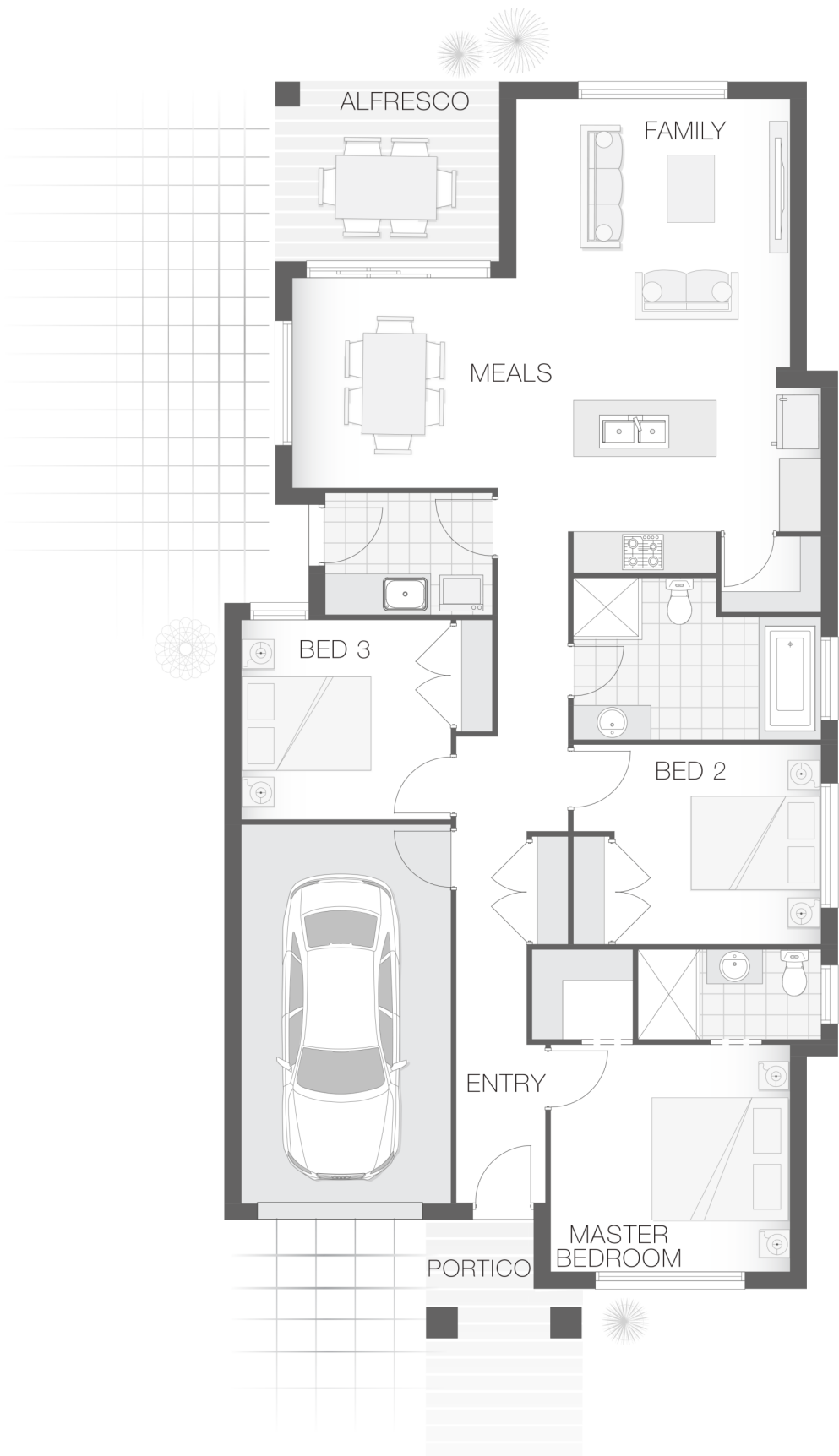
Powered by iBuildNew

adenbrook  
homes

REF: IADENHL514246

### House Features:

- ✓ Tiling to the Alfresco and Portico
- ✓ Coloured Concrete Driveway
- ✓ 20mm Stone benchtop to the kitchen, bathroom and Ensuite.
- ✓ 2x Gas Points
- ✓ Flyscreens To all openable windows
- ✓ Shower Niches
- ✓ 1020mm Entry Door
- ✓ Soft-close drawers and doors to Kitchen and Bathrooms
- ✓ 2590mm Ceiling Upgrade to the Ground Floor Only
- ✓ Daiken Reverse Cycle Ducted Air Conditioning
- ✓ Builders range tiles & carpet throughout home
- ✓ Westinghouse Cooktop, Oven and Dishwasher
- ✓ Much More...



### ENQUIRE NOW:

Shriti Sinha • P: 0410116413 • E: [sydneywest.southwest@adenbrook.com.au](mailto:sydneywest.southwest@adenbrook.com.au)

Images depicted on this site are for illustration purposes only. Facades and other images of homes and land estates may include optional upgrades, additional fixtures, finishes and home or estate features that are not included in the base price of the home or land package such as landscaping, feature tiling, decking, furnishing, feature lighting, pools, etc. Land estate pricing and plans are subject to developer guidelines and may vary at any time.