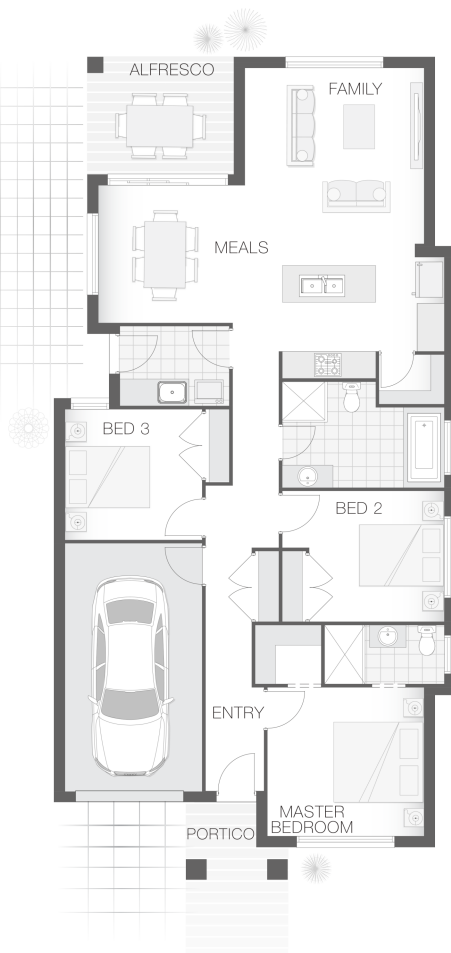


The Destiny

3 2 1 16 sq

Facade name: Byron

House Plan:



LOT #TBA

Hills of Carmel

Address: Hills of Carmel - Box Hill, Box Hill (NSW),
2765



300 m²

House and land package price:

From **\$742,254***

About package:

This Adenbrook Home & Land package is located in the highly sought-after estate of Hills of Carmel.

Set on a 300m² block of land, we have coupled it with our Destiny home design.

The Destiny home design is contemporary and petite yet cleverly designed to accommodate a small lot and deliver on space with a layout that is ideal for the growing family.

The slim design ensures its suitability for smaller, more compact lot yet does not compromise on comfort and functionality including a great entertaining space and alfresco dining area.

This House and Land Package includes:-

- * Builders range tiles & carpet throughout home
- * Tiling to the Alfresco and Portico
- * Coloured Concrete Driveway
- * Daiken Reverse Cycle Ducted Air Con.
- * Caroma Bathroom Accessories
- * PLUS our fantastic Ultimate Upgrade Bundle!

Contact us today to find out how we can help you create your dream house and land package. You can also view our Demi and Meridian designs on display at 19 Noah Street, Box Hill- contact our team to book your inspection today.

ENQUIRE NOW:

Shriti Sinha • P: 0410116413 • E: sydneywest.southwest@adenbrook.com.au

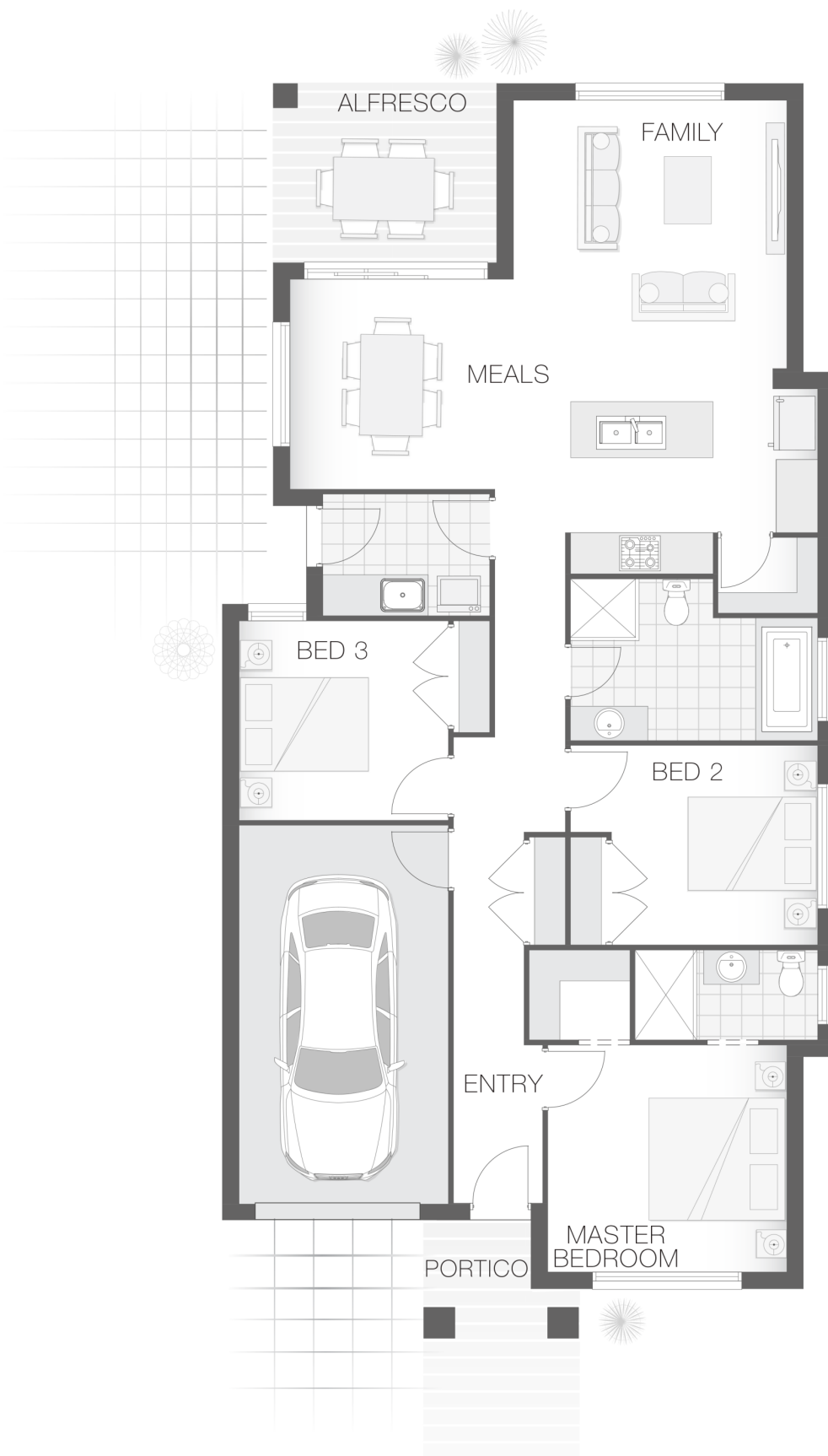
Plans and designs depicted may change with facade selection. All drawings and photographs are for illustrative purposes only. This work is exclusively owned by AB Aust. IP Pty Ltd (ACN 163 575 077) and cannot be reproduced or copied wholly or in part, in any form without permission of AB Aust. IP Pty Ltd. Any prices in this document include GST, are subject to change without notice, relate only to the base house price and standard inclusions. Site costs will vary depending on site conditions, local Council requirements, estate guidelines and any other statutory requirements applicable. Adenbrook Homes does not have a hold on the block, this package is subject to land availability and you securing the land through the land agent directly. For more information please speak to one of our friendly New Home Consultants.

House Features:

- ✓ Tiling to the Alfresco and Portico
- ✓ 1020mm Entry Door
- ✓ Shower Niches
- ✓ Soft-close drawers and doors to Kitchen and Bathrooms
- ✓ 2590mm Ceiling Upgrade to the Ground Floor Only
- ✓ Builders range tiles & carpet throughout home
- ✓ Coloured Concrete Driveway
- ✓ 20mm Stone benchtop to the kitchen, bathroom and Ensuite.
- ✓ 2x Gas Points
- ✓ Flyscreens To all openable windows
- ✓ Daiken Reverse Cycle Ducted Air Conditioning
- ✓ Westinghouse Cooktop, Oven and Dishwasher
- ✓ Much More...

Estate Features:

- ✓ Rouse Hill Town Centre
- ✓ Close to New Metro Line



ENQUIRE NOW:

Shriti Sinha • P: 0410116413 • E: sydneywest.southwest@adenbrook.com.au

Plans and designs depicted may change with facade selection. All drawings and photographs are for illustrative purposes only. This work is exclusively owned by AB Aust. IP Pty Ltd (ACN 163 575 077) and cannot be reproduced or copied wholly or in part, in any form without permission of AB Aust. IP Pty Ltd. Any prices in this document include GST, are subject to change without notice, relate only to the base house price and standard inclusions. Site costs will vary depending on site conditions, local Council requirements, estate guidelines and any other statutory requirements applicable. Adenbrook Homes does not have a hold on the block, this package is subject to land availability and you securing the land through the land agent directly. For more information please speak to one of our friendly New Home Consultants.