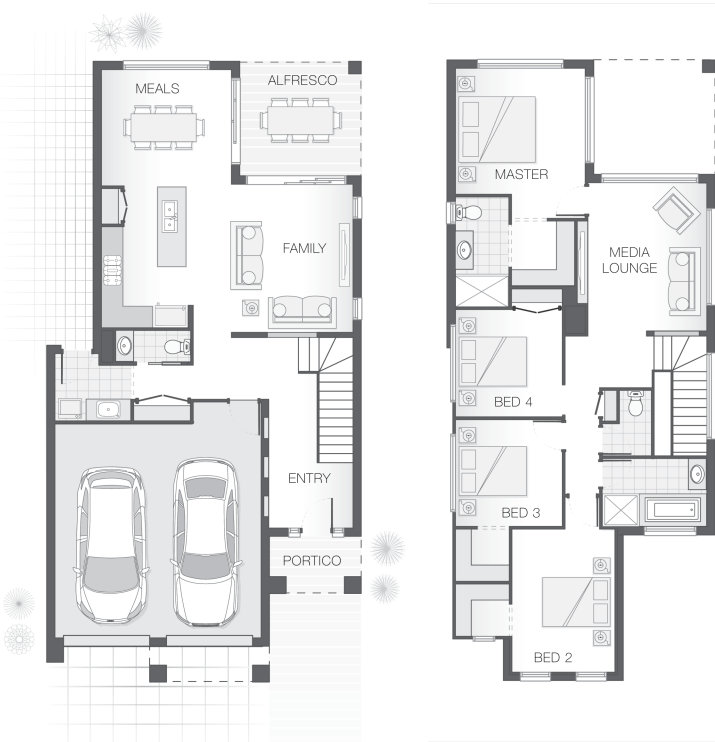


## The Deakon

4 2 2 25 sq

Facade name: Benson

### House Plan:



### LOT #TBA

Hills of Carmel

Address: Hills of Carmel - Box Hill, Box Hill (NSW),  
2765



300 m<sup>2</sup>

House and land package price:

From **\$829,817\***

### About package:

This Adenbrook Home & Land package is located in the highly sought-after estate of Hills of Carmel.

Set on a 300m<sup>2</sup> block of land, we have coupled it with our Deakon home design.

The Deakon home design is compact but punchy! With an outdoor alfresco area that merges seamlessly with the lower level kitchen, dining and living spaces the lower level is certain to accommodate the entire family.

The upper floor provides a stylish layout with master retreat including ensuite and walk-in-robe sensibly separate from additional bedrooms and media room creating a feeling of privacy and space in compact footprint.

This House and Land Package includes:-

- \* Builders range tiles & carpet throughout home
- \* Tiling to the Alfresco and Portico
- \* Coloured Concrete Driveway
- \* Daiken Reverse Cycle Ducted Air Con.
- \* Caroma Bathroom Accessories
- \* PLUS our fantastic Ultimate Upgrade Bundle!

Contact us today to find out how we can help you create your dream house and land package. You can also view our Demi and Meridian designs on display at 19 Noah Street, Box Hill- contact our team to book

### ENQUIRE NOW:

Shriti Sinha • P: 0410116413 • E: sydneywest.southwest@adenbrook.com.au

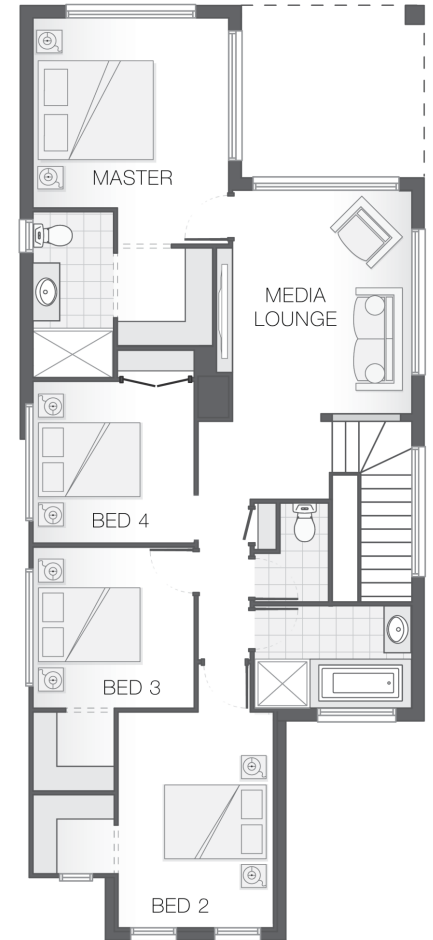
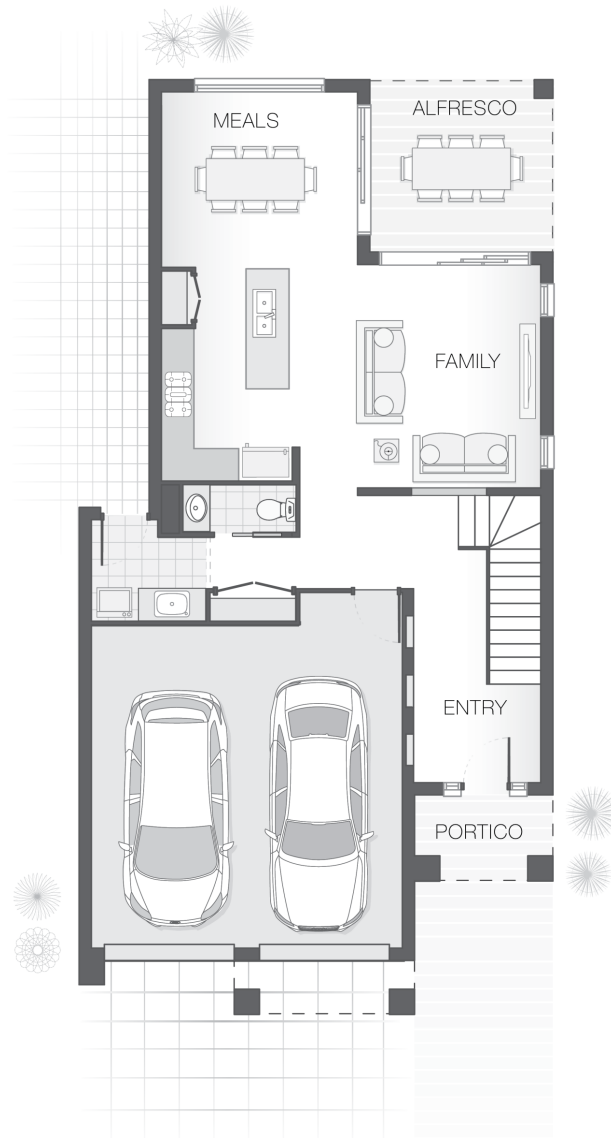
Plans and designs depicted may change with facade selection. All drawings and photographs are for illustrative purposes only. This work is exclusively owned by AB Aust. IP Pty Ltd (ACN 163 575 077) and cannot be reproduced or copied wholly or in part, in any form without permission of AB Aust. IP Pty Ltd. Any prices in this document include GST, are subject to change without notice, relate only to the base house price and standard inclusions. Site costs will vary depending on site conditions, local Council requirements, estate guidelines and any other statutory requirements applicable. Adenbrook Homes does not have a hold on the block, this package is subject to land availability and you securing the land through the land agent directly. For more information please speak to one of our friendly New Home Consultants.

### House Features:

- ✓ Tiling to the Alfresco and Portico
- ✓ Coloured Concrete Driveway
- ✓ 1020mm Entry Door
- ✓ Shower Niches
- ✓ 20mm Stone benchtop to the kitchen, bathroom and Ensuite.
- ✓ 2x Gas Points
- ✓ Flyscreens To all openable windows
- ✓ Builders range tiles & carpet throughout home
- ✓ Daiken Reverse Cycle Ducted Air Conditioning
- ✓ Westinghouse Cooktop, Oven and Dishwasher
- ✓ 2590mm Ceiling Upgrade to the Ground Floor Only
- ✓ Soft-close drawers and doors to Kitchen and Bathrooms
- ✓ Much More...

### Estate Features:

- ✓ Rouse Hill Town Centre
- ✓ Close to New Metro Line



### ENQUIRE NOW:

Shriti Sinha • P: 0410116413 • E: [sydneywest.southwest@adenbrook.com.au](mailto:sydneywest.southwest@adenbrook.com.au)

Plans and designs depicted may change with facade selection. All drawings and photographs are for illustrative purposes only. This work is exclusively owned by AB Aust. IP Pty Ltd (ACN 163 575 077) and cannot be reproduced or copied wholly or in part, in any form without permission of AB Aust. IP Pty Ltd. Any prices in this document include GST, are subject to change without notice, relate only to the base house price and standard inclusions. Site costs will vary depending on site conditions, local Council requirements, estate guidelines and any other statutory requirements applicable. Adenbrook Homes does not have a hold on the block, this package is subject to land availability and you securing the land through the land agent directly. For more information please speak to one of our friendly New Home Consultants.