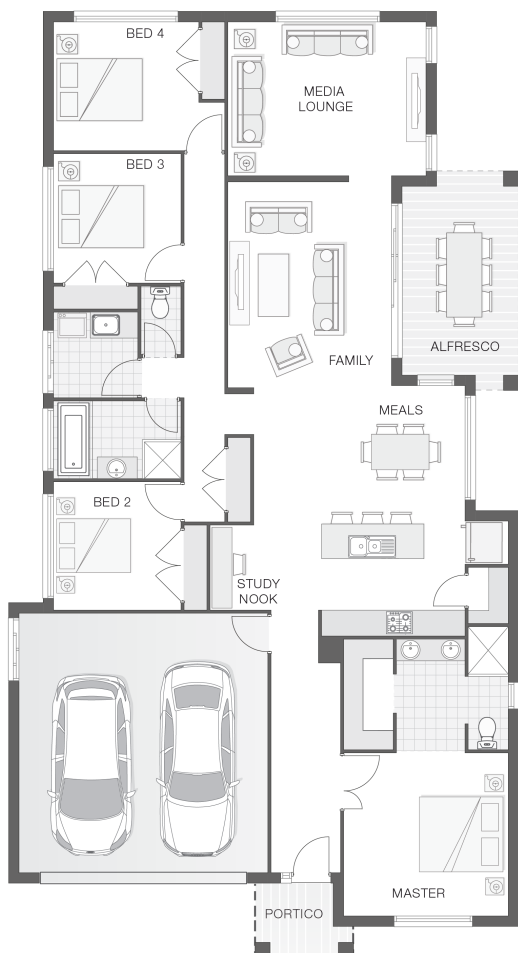


The Amity - MK2

4 2 2 24 sq

Facade name: Lacie

House Plan:



LOT #61

Saltwater Links

Address: Saltwater Links Estate Stage 3, South West Rocks, 2431



576 m²

House and land package price:

From **\$535,750***

About package:

FIXED TURN-KEY PRICE

Adenbrook Homes Mid North Coast are a locally owned, award-winning builder, backed by the strength of a big brand. We offer turn-key pricing, designed to give you everything you need to move straight in - without the hidden costs.

The Amity home design on this 576m² block in Saltwater Links Estate considers both simplicity and convenience for modern family living. Featuring a generous open plan living zone including kitchen, meals and family rooms with adjoining alfresco dining area, entertaining has never been so easy. The master retreat with ensuite and walk-in-robe is cleverly positioned at the opposing end of the home to other bedrooms, providing great separation and privacy for the entire family.

What is included in the price?

- Quality Timber Look Flooring, Carpet and Tiles
- Site works allowance, including creating split level design
- Flyscreens
- Rainwater Tank
- Remote Controlled Garage Door + 2 remotes
- Concrete Alfresco and Portico areas
- Letterbox and Clothesline

ENQUIRE NOW:

Angie Walford • P: 0429626412 • E: portmacquarie.display@adenbrook.com.au

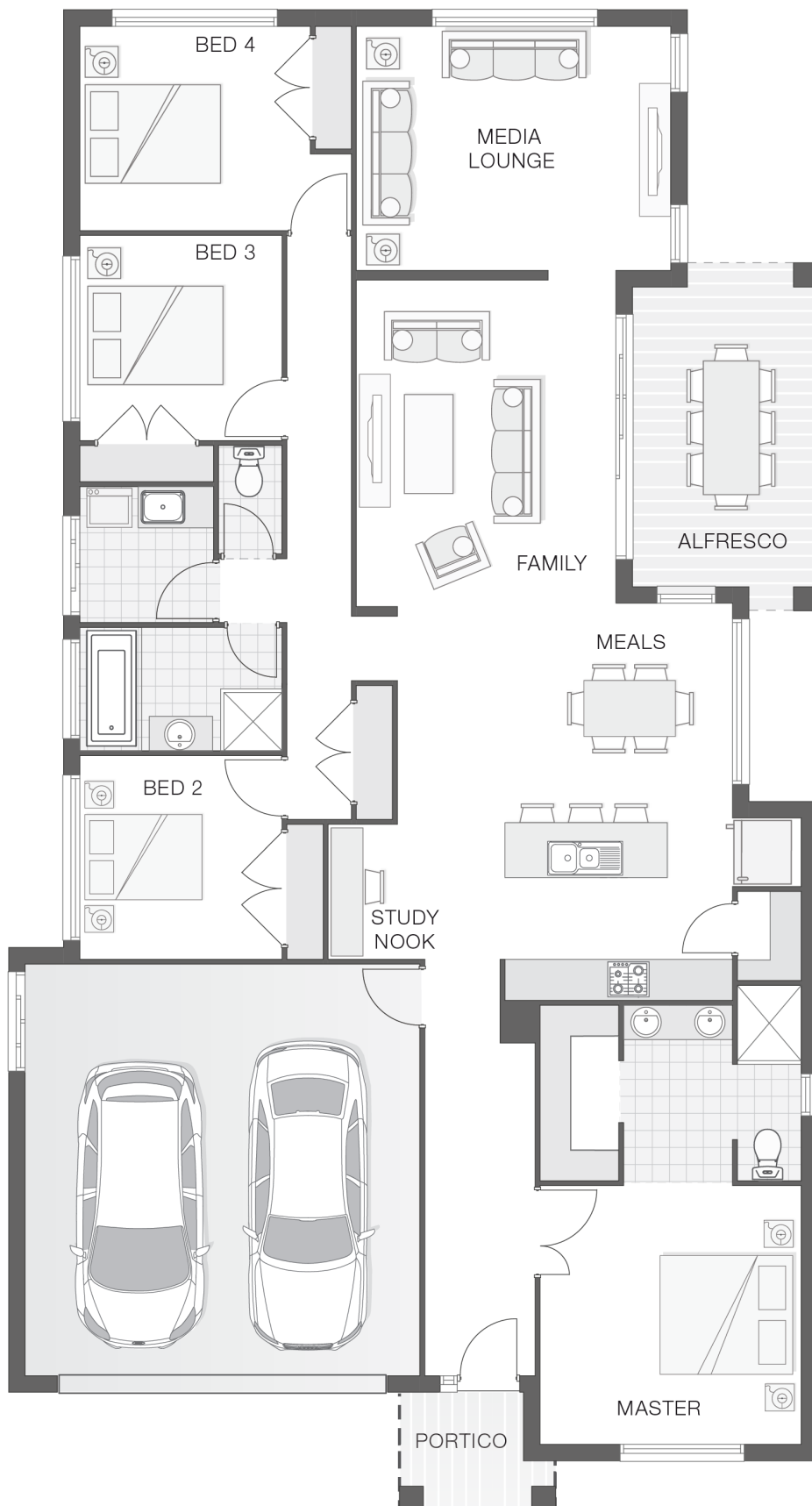
Plans and designs depicted may change with facade selection. All drawings and photographs are for illustrative purposes only. This work is exclusively owned by AB Aust. IP Pty Ltd (ACN 163 575 077) and cannot be reproduced or copied wholly or in part, in any form without permission of AB Aust. IP Pty Ltd. Any prices in this document include GST, are subject to change without notice, relate only to the base house price and standard inclusions. Site costs will vary depending on site conditions, local Council requirements, estate guidelines and any other statutory requirements applicable. Adenbrook Homes does not have a hold on the block, this package is subject to land availability and you securing the land through the land agent directly. For more information please speak to one of our friendly New Home Consultants.

House Features:

- ✓ 900mm Cooker and Dishwasher
- ✓ 3000L rainwater tank with submersible pump
- ✓ Letterbox and Clothesline
- ✓ Remote Controlled Garage Door + 2 remotes
- ✓ 1200mm Hinged Wideline Aluminium Entry Door
- ✓ Ultimate upgrade bundle
- ✓ Square set ceilings to living area
- ✓ 2570mm high ceilings
- ✓ Site works allowance
- ✓ Quality Timber Look Flooring, Carpet and Tiles
- ✓ Dishwasher
- ✓ 20mm stone benchtops to kitchen
- ✓ Brushed Concrete Driveway
- ✓ Concrete Alfresco and Portico areas
- ✓ Flyscreens

Estate Features:

- ✓ Close to beaches
- ✓ Only half an hour from Coffs Harbour
- ✓ Nearby medical and shopping facilities
- ✓ Quiet location
- ✓ Flat, easy access land
- ✓ Flat, accessible land



ENQUIRE NOW:

Angie Walford • P: 0429626412 • E: portmacquarie.display@adenbrook.com.au

Plans and designs depicted may change with facade selection. All drawings and photographs are for illustrative purposes only. This work is exclusively owned by AB Aust. IP Pty Ltd (ACN 163 575 077) and cannot be reproduced or copied wholly or in part, in any form without permission of AB Aust. IP Pty Ltd. Any prices in this document include GST, are subject to change without notice, relate only to the base house price and standard inclusions. Site costs will vary depending on site conditions, local Council requirements, estate guidelines and any other statutory requirements applicable. Adenbrook Homes does not have a hold on the block, this package is subject to land availability and you securing the land through the land agent directly. For more information please speak to one of our friendly New Home Consultants.