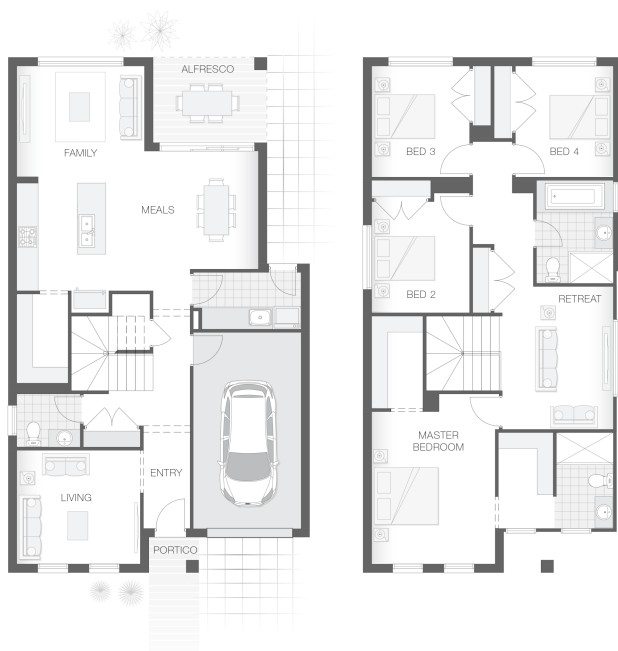


The Madison

4 2 1 23 sq

Facade name: Oakley

House Plan:



LOT #6264

Elara

Address: Werribee Street, Marsden Park, 2765



250 m²

House and land package price:

From **\$754,900***

About package:

This Adenbrook Fixed Price House and Land package is located in the highly sought-after estate of Elara, due to register June 2021. Set on a 250m2 block of land, we have coupled it with our Madison home design.

The Madison home design is as practical and purposeful with well-appointed bedrooms and spacious living zones this home suits the modern family. This home is slim and compact making it suitable for the narrow lot.

This House and Land Package includes:-

- * Standard Site Costs and Standard Basix Requirements
- * Builders range tiles & carpet throughout home
- * Tiling to the Alfresco and Portico
- * Coloured Concrete Driveway
- * Daiken Reverse Cycle Ducted Air Con.
- * Caroma Bathroom Accessories
- * PLUS our fantastic Ultimate Upgrade Bundle!

Contact us today to find out how we can help you create your dream house and land package. You can also view our Demi and Meridian designs on display at 17-19 Noah Street, Box Hill - contact our team to book your inspection today.

ENQUIRE NOW:

Shriti Sinha • P: 0410116413 • E: sydneywest.southwest@adenbrook.com.au

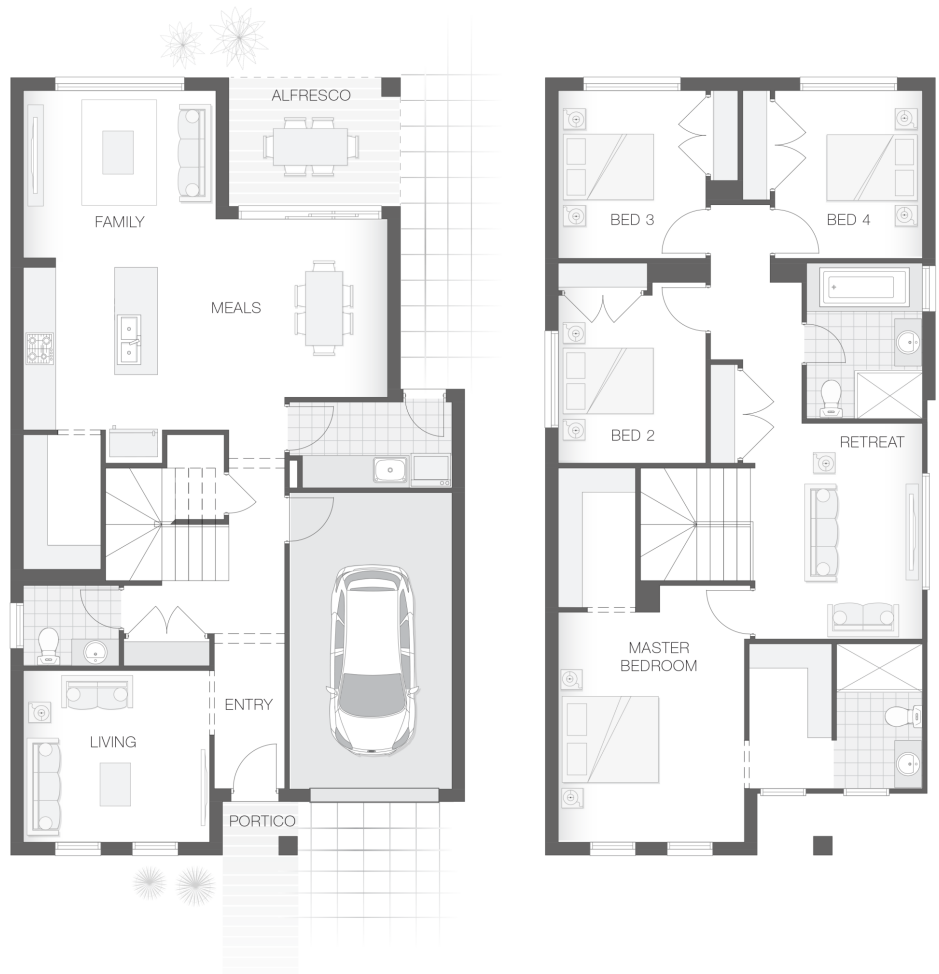
Images depicted on this site are for illustration purposes only. Facades and other images of homes and land estates may include optional upgrades, additional fixtures, finishes and home or estate features that are not included in the base price of the home or land package such as landscaping, feature tiling, decking, furnishing, feature lighting, pools, etc. Land estate pricing and plans are subject to developer guidelines and may vary at any time.

House Features:

- ✓ Coloured Concrete Driveway
- ✓ Tiling to the Alfresco and Portico
- ✓ 1020mm Entry Door
- ✓ Shower Niches
- ✓ R2 Walls and R4 Ceiling Insulation
- ✓ Soft-close drawers and doors to Kitchen and Bathrooms
- ✓ 2590mm Ceiling Upgrade to the Ground Floor Only
- ✓ Much More...
- ✓ Flyscreens To all openable windows
- ✓ 2x Gas Points
- ✓ 20mm Stone benchtop to the kitchen, bathroom and Ensuite.
- ✓ Builders range tiles & carpet throughout home
- ✓ Daiken Reverse Cycle Ducted Air Conditioning
- ✓ Monier Atura low-profile roof tiles
- ✓ Westinghouse Cooktop, Oven and Dishwasher

Estate Features:

- ✓ St Luke's Catholic College
- ✓ Marsden Park Home
- ✓ Riverstone Station
- ✓ 2X Gas Points



ENQUIRE NOW:

Shriti Sinha • P: 0410116413 • E: sydneywest.southwest@adenbrook.com.au

Images depicted on this site are for illustration purposes only. Facades and other images of homes and land estates may include optional upgrades, additional fixtures, finishes and home or estate features that are not included in the base price of the home or land package such as landscaping, feature tiling, decking, furnishing, feature lighting, pools, etc. Land estate pricing and plans are subject to developer guidelines and may vary at any time.