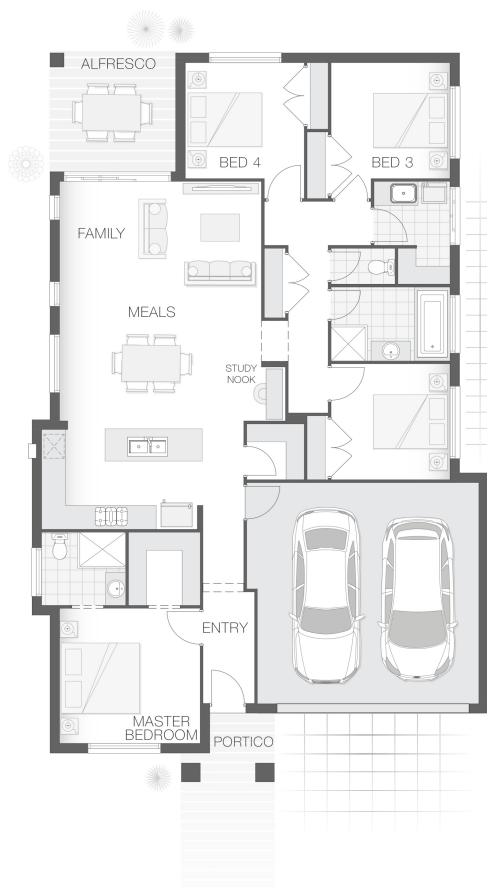


## The Como Option A

4 2 2 20 sq

Facade name: Taylor

### House Plan:



### LOT #3171

The Gables

Address: Proposed Road, Box Hill (NSW), 2765



450.9 m<sup>2</sup>

House and land package price:

From **\$879,900\***

### About package:

This Adenbrook House & Land package is located in the highly sought-after estate of The Gables, Box Hill.

Set on a 450.9m<sup>2</sup> block of land due to register Late 2021. We have coupled it with our Como A home design.

The Como home design is ideal for comfortable and convenient family living. The clever design boasts a spacious kitchen, open plan meals and family room that flow effortlessly into the alfresco dining area.

The master retreat is tucked away from the rest of the home providing great privacy.

This House and Land Package includes:-

- \* Standard Site Costs and Standard Basix Requirements
- \* Builders range tiles & carpet throughout home
- \* Tiling to the Alfresco and Portico
- \* Coloured Concrete Driveway
- \* Daiken Reverse Cycle Ducted Air Con.
- \* Caroma Bathroom Accessories
- \* PLUS our fantastic Ultimate Upgrade Bundle!

Contact us today to find out how we can help you create your dream house and land package. You can also view our Demi and Meridian designs on display at 17-19 Noah Street, Box Hill - contact our team to book your inspection today.

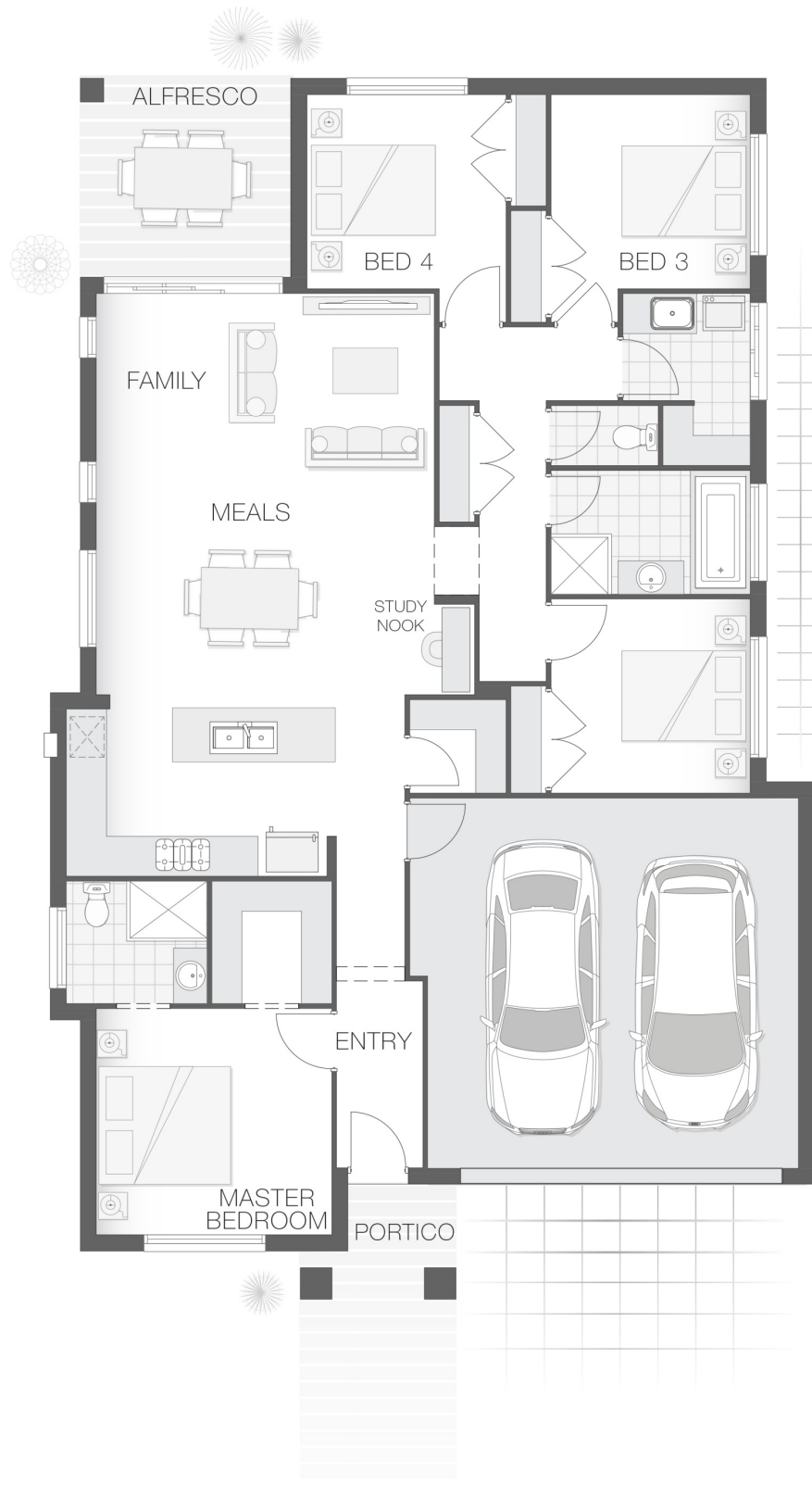
### ENQUIRE NOW:

Shriti Sinha • P: 0410116413 • E: sydneywest.southwest@adenbrook.com.au

Plans and designs depicted may change with facade selection. All drawings and photographs are for illustrative purposes only. This work is exclusively owned by AB Aust. IP Pty Ltd (ACN 163 575 077) and cannot be reproduced or copied wholly or in part, in any form without permission of AB Aust. IP Pty Ltd. Any prices in this document include GST, are subject to change without notice, relate only to the base house price and standard inclusions. Site costs will vary depending on site conditions, local Council requirements, estate guidelines and any other statutory requirements applicable. Adenbrook Homes does not have a hold on the block, this package is subject to land availability and you securing the land through the land agent directly. For more information please speak to one of our friendly New Home Consultants.

### House Features:

- ✓ Standard Site Costs and Standard Basix Requirements
- ✓ Coloured Concrete Driveway
- ✓ Tiling to the Alfresco and Portico
- ✓ 1020mm Entry Door
- ✓ Shower Niches
- ✓ Builders range tiles & carpet throughout home
- ✓ 2590mm Ceiling Upgrade
- ✓ 20mm Stone benchtop to the kitchen, bathroom and Ensuite.
- ✓ 2x Gas Points



### ENQUIRE NOW:

Shriti Sinha • P: 0410116413 • E: [sydneywest.southwest@adenbrook.com.au](mailto:sydneywest.southwest@adenbrook.com.au)

Plans and designs depicted may change with facade selection. All drawings and photographs are for illustrative purposes only. This work is exclusively owned by AB Aust. IP Pty Ltd (ACN 163 575 077) and cannot be reproduced or copied wholly or in part, in any form without permission of AB Aust. IP Pty Ltd. Any prices in this document include GST, are subject to change without notice, relate only to the base house price and standard inclusions. Site costs will vary depending on site conditions, local Council requirements, estate guidelines and any other statutory requirements applicable. Adenbrook Homes does not have a hold on the block, this package is subject to land availability and you securing the land through the land agent directly. For more information please speak to one of our friendly New Home Consultants.