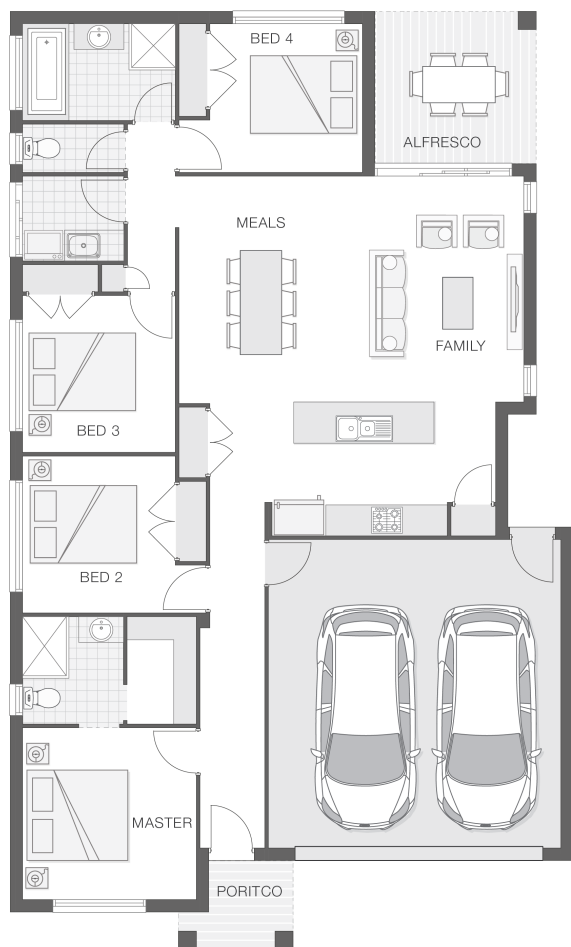


The Catarina

4 2 2 19 sq

Facade name: Arden

House Plan:



LOT #9

Glen Valley Estate

Address: Glen Valley Estate, Glenreagh, 2450



1994 m²

House and land package price:

From **\$631,890***

About package:

This serene development in the hinterland of the Coffs Coast is ideally situated amongst the rolling green hills of the Orara Valley in the township of Glenreagh. Located centrally, Glenreagh is half an hour from Coffs Harbour. The Catarina home design is fresh and vibrant and provides a stylish home for a growing family. The entertaining zone presents an alfresco space that effortlessly integrates with the kitchen, family room and meals zones providing the ideal location for celebrations, relaxation and family dining all year round.

What's included in your beautifully finished, high quality new home

- All Council Fees and Approvals with M Class Soil
- Full sarking wrap to treated timber frames and roof
- Insulation to walls and ceiling, flyscreens
- Carpet / tiles or vinyl flooring
- Recessed wet areas
- Westinghouse appliances
- Alfresco with recessed stacking sliding doors
- Drop-in laundry tub with cabinet and clothesline
- Full electrical layout with downlights and feature lighting and TV aerial
- Water tank, mailbox and concrete driveway

ULTIMATE UPGRADE BUNDLE FOR ONLY \$4990

EXTERNAL / INTERNAL

- Hume Savoy 1200mm hinged entry door
- 2570mm ceiling height with square set finish

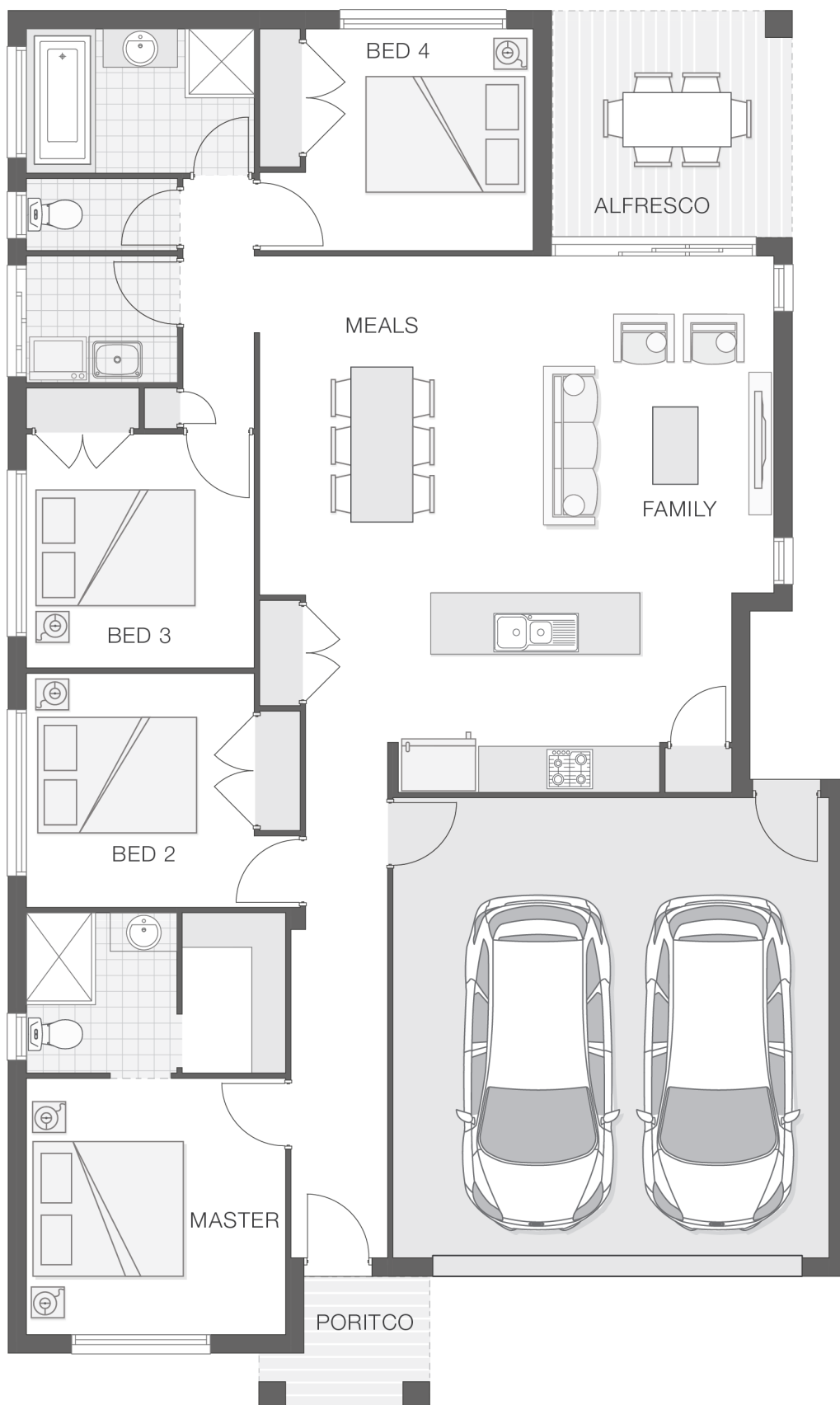
ENQUIRE NOW:

Niki Whelan • P: 0412 797 925 • E: coffs.display@adenbrook.com.au

Plans and designs depicted may change with facade selection. All drawings and photographs are for illustrative purposes only. This work is exclusively owned by AB Aust. IP Pty Ltd (ACN 163 575 077) and cannot be reproduced or copied wholly or in part, in any form without permission of AB Aust. IP Pty Ltd. Any prices in this document include GST, are subject to change without notice, relate only to the base house price and standard inclusions. Site costs will vary depending on site conditions, local Council requirements, estate guidelines and any other statutory requirements applicable. Adenbrook Homes does not have a hold on the block, this package is subject to land availability and you securing the land through the land agent directly. For more information please speak to one of our friendly New Home Consultants.

House Features:

- ✓ 20mm stone benchtops to kitchen
- ✓ 900mm Cooker and Dishwasher
- ✓ Carpet and Tile or Vinyl floors; modern architraves 67mm x 18mm
- ✓ Three (3) coat Haymes low toxic internal paint system
- ✓ 3000L rainwater tank with submersible pump
- ✓ Termite resistant "blue pine" framing and trusses and physical termite barriers
- ✓ Concrete Alfresco and Portico areas
- ✓ Flyscreens
- ✓ Letterbox and Clothesline
- ✓ Ultimate upgrade bundle
- ✓ 1200mm Hinged Wideline Aluminium Entry Door
- ✓ Square set ceilings to living area
- ✓ Site works allowance
- ✓ 2570mm high ceilings
- ✓ Quality Timber Look Flooring, Carpet and Tiles
- ✓ 3 included facade options and complimentary window changes
- ✓ Overhead cupboards to kitchen, 4 shelves to Pantry and Linen
- ✓ Double lock-up garage with remotes, mailbox, and clothesline



ENQUIRE NOW:

Niki Whelan • P: 0412 797 925 • E: coffs.display@adenbrook.com.au

Plans and designs depicted may change with facade selection. All drawings and photographs are for illustrative purposes only. This work is exclusively owned by AB Aust. IP Pty Ltd (ACN 163 575 077) and cannot be reproduced or copied wholly or in part, in any form without permission of AB Aust. IP Pty Ltd. Any prices in this document include GST, are subject to change without notice, relate only to the base house price and standard inclusions. Site costs will vary depending on site conditions, local Council requirements, estate guidelines and any other statutory requirements applicable. Adenbrook Homes does not have a hold on the block, this package is subject to land availability and you securing the land through the land agent directly. For more information please speak to one of our friendly New Home Consultants.