

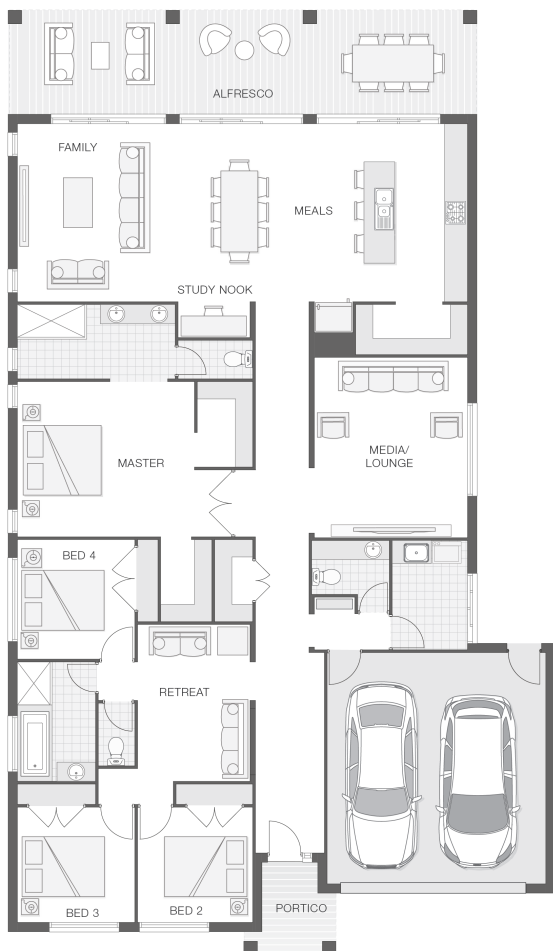


The Indigo - A

4 2 2 33 sq

Facade name: Karin

House Plan:



LOT #11

The Ridgeway

Address: Joe Close, Barden Ridge, 2234



779.5 m²

House and land package price:

From **\$1,233,900***

About package:

This Adenbrook Home & Land package is located in the highly sought-after estate of The Ridgeway, in Barden Ridge. Set on a 779.5m² block of land, we have coupled it with our Indigo A home design.

The Indigo home design is on trend, tasteful and well-appointed, creating the perfect sanctuary for the modern family.

This House and Land Package includes:-

- * Standard Site Costs and Standard Basix Requirements
- * Builders range tiles & carpet throughout home
- * Tiling to the Alfresco and Portico
- * Coloured Concrete Driveway
- * Daiken Reverse Cycle Ducted Air Con.
- * Caroma Bathroom Accessories
- * PLUS our fantastic Ultimate Upgrade Bundle!

Contact us today to find out how we can help you create your dream house and land package. You can also view our Isla A designs on display at 10 Whistler Street, Wongawilli- contact our team to book your inspection today.

ENQUIRE NOW:

Jillian Stokes • P: 0415 301 615 • E: greaterwollongong@adenbrook.com.au

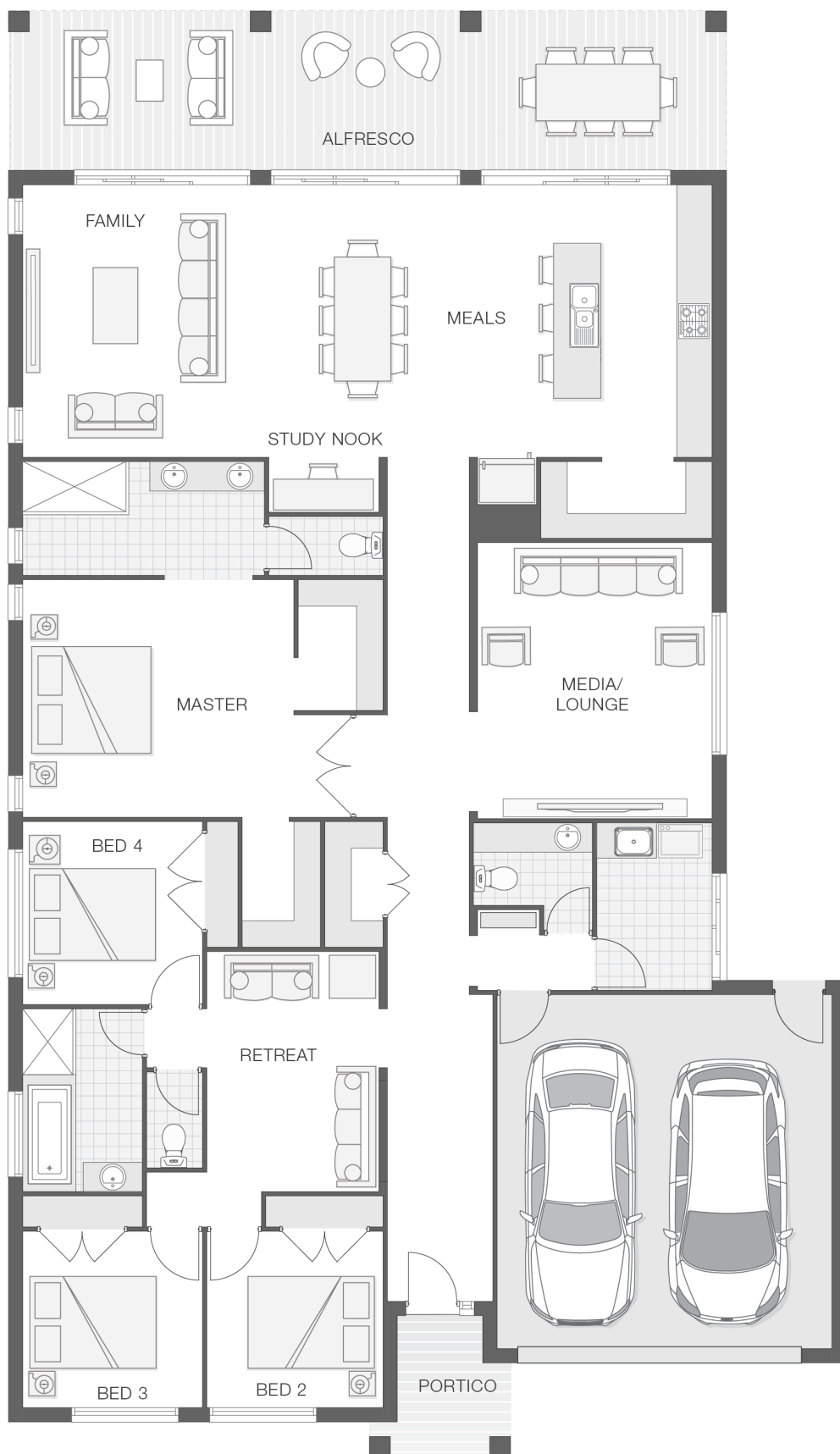
Plans and designs depicted may change with facade selection. All drawings and photographs are for illustrative purposes only. This work is exclusively owned by AB Aust. IP Pty Ltd (ACN 163 575 077) and cannot be reproduced or copied wholly or in part, in any form without permission of AB Aust. IP Pty Ltd. Any prices in this document include GST, are subject to change without notice, relate only to the base house price and standard inclusions. Site costs will vary depending on site conditions, local Council requirements, estate guidelines and any other statutory requirements applicable. Adenbrook Homes does not have a hold on the block, this package is subject to land availability and you securing the land through the land agent directly. For more information please speak to one of our friendly New Home Consultants.

House Features:

- ✓ Tiling to the Alfresco and Portico
- ✓ 1020mm Entry Door
- ✓ Standard Site Costs and Standard Basix Requirements
- ✓ Coloured Concrete Driveway
- ✓ 20mm Stone benchtop to the kitchen, bathroom and Ensuite.
- ✓ 2x Gas Points
- ✓ Flyscreens To all openable windows
- ✓ Much More...
- ✓ Clipsal Iconic Ultramodern range Switch Gear
- ✓ Monier Atura low-profile roof tiles
- ✓ Westinghouse Cooktop, Oven and Dishwasher
- ✓ Daiken Reverse Cycle Ducted Air Conditioning
- ✓ Builders range tiles & carpet throughout home
- ✓ Soft-close drawers and doors to Kitchen and Bathrooms
- ✓ R2 Walls and R4 Ceiling Insulation
- ✓ Shower Niches

Estate Features:

- ✓ Lucas Heights Community School
- ✓ Menai Central Shopping Plaza
- ✓ Sutherland Station



ENQUIRE NOW:

Jillian Stokes • P: 0415 301 615 • E: greaterwollongong@adenbrook.com.au

Plans and designs depicted may change with facade selection. All drawings and photographs are for illustrative purposes only. This work is exclusively owned by AB Aust. IP Pty Ltd (ACN 163 575 077) and cannot be reproduced or copied wholly or in part, in any form without permission of AB Aust. IP Pty Ltd. Any prices in this document include GST, are subject to change without notice, relate only to the base house price and standard inclusions. Site costs will vary depending on site conditions, local Council requirements, estate guidelines and any other statutory requirements applicable. Adenbrook Homes does not have a hold on the block, this package is subject to land availability and you securing the land through the land agent directly. For more information please speak to one of our friendly New Home Consultants.