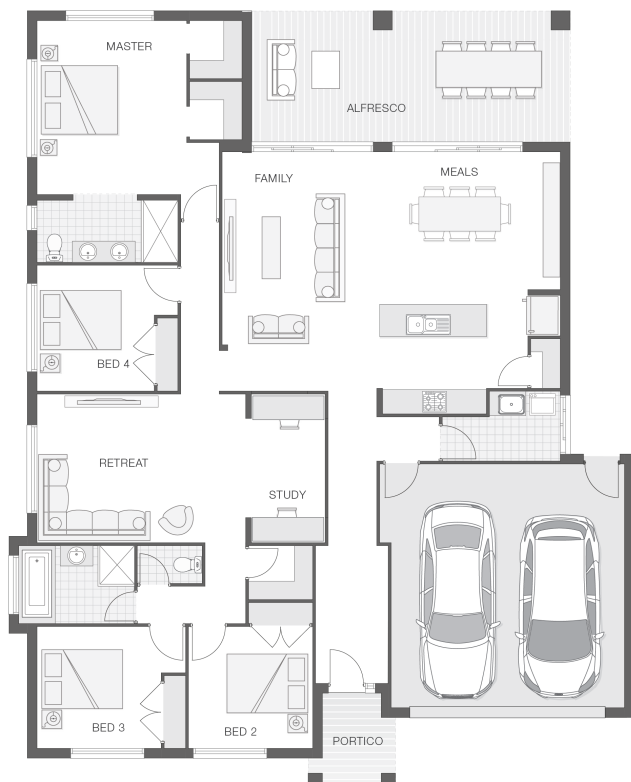


The Iluka - A

4 2 2 27 sq

Facade name: Tanson

House Plan:



LOT #95

The Ridgeway

Address: Namatjira Street, Barden Ridge, 2234



594 m²

House and land package price:

From **\$1,288,900***

About package:

This Adenbrook Home & Land package is located in the highly sought-after estate of The Ridgeway, in Barden Ridge. Set on a 594m² block of land, we have coupled it with our Iluka A home design.

The Iluka home design is the epitome of lavish family living. This stylish design boasts sophistication, separation and space. The alfresco entertaining area blends perfectly with the indoor living spaces and kitchen, creating an entertainment zone like none other.

This House and Land Package includes:-

- * Standard Site Costs and Standard Basix Requirements
- * Builders range tiles & carpet throughout home
- * Tiling to the Alfresco and Portico
- * Coloured Concrete Driveway
- * Daiken Reverse Cycle Ducted Air Con.
- * Caroma Bathroom Accessories
- * PLUS our fantastic Ultimate Upgrade Bundle!

Contact us today to find out how we can help you create your dream house and land package. You can also view our Isla A designs on display at 10 Whistler Street, Wongawilli- contact our team to book your inspection today.

ENQUIRE NOW:

Jillian Stokes • P: 0415 301 615 • E: greaterwollongong@adenbrook.com.au

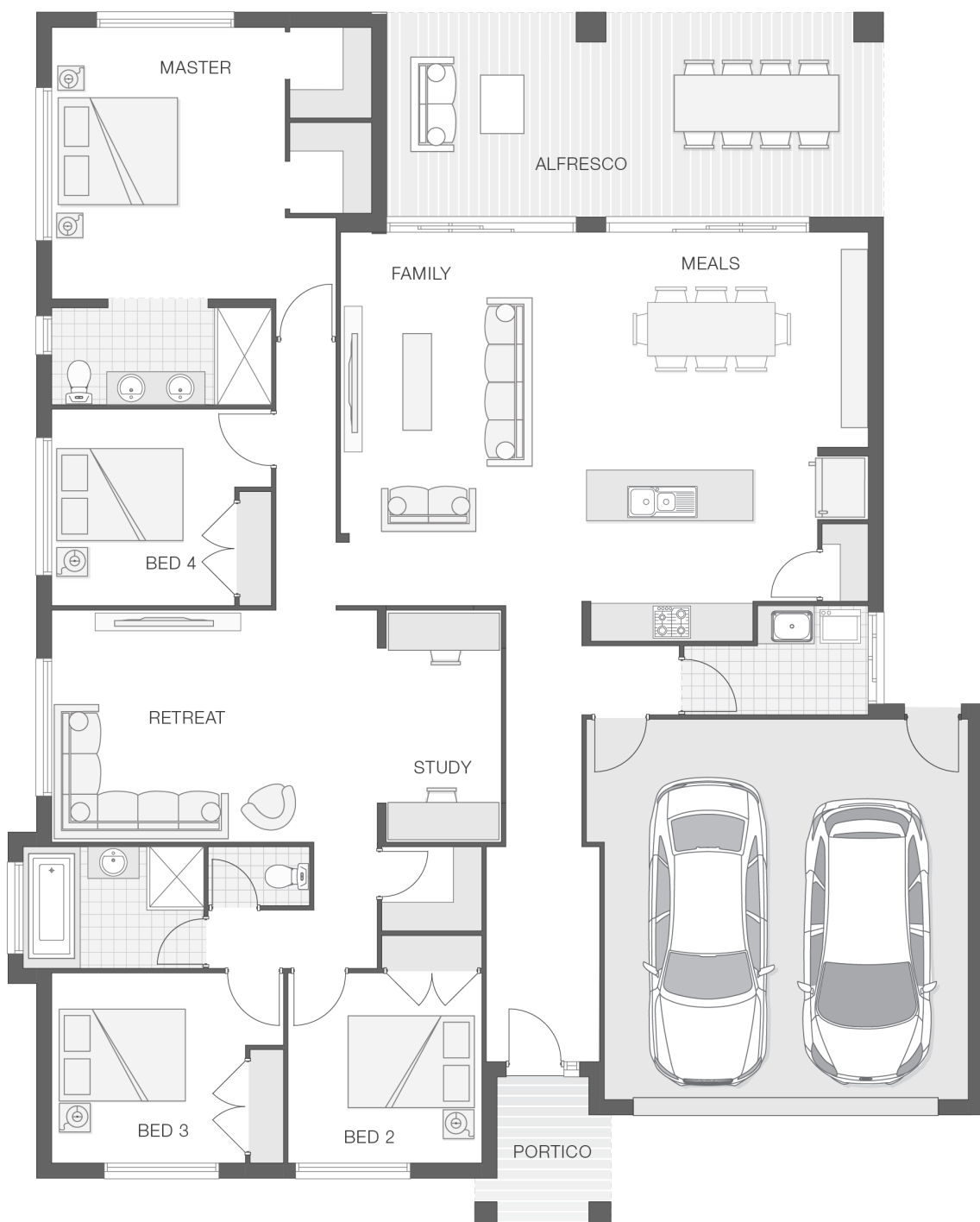
Plans and designs depicted may change with facade selection. All drawings and photographs are for illustrative purposes only. This work is exclusively owned by AB Aust. IP Pty Ltd (ACN 163 575 077) and cannot be reproduced or copied wholly or in part, in any form without permission of AB Aust. IP Pty Ltd. Any prices in this document include GST, are subject to change without notice, relate only to the base house price and standard inclusions. Site costs will vary depending on site conditions, local Council requirements, estate guidelines and any other statutory requirements applicable. Adenbrook Homes does not have a hold on the block, this package is subject to land availability and you securing the land through the land agent directly. For more information please speak to one of our friendly New Home Consultants.

House Features:

- ✓ Tiling to the Alfresco and Portico
- ✓ Shower Niches
- ✓ R2 Walls and R4 Ceiling Insulation
- ✓ 1020mm Entry Door
- ✓ Soft-close drawers and doors to Kitchen and Bathrooms
- ✓ Flyscreens To all openable windows
- ✓ 2x Gas Points
- ✓ Coloured Concrete Driveway
- ✓ Standard Site Costs and Standard Basix Requirements
- ✓ 20mm Stone benchtop to the kitchen, bathroom and Ensuite.
- ✓ Builders range tiles & carpet throughout home
- ✓ Daiken Reverse Cycle Ducted Air Conditioning
- ✓ Westinghouse Cooktop, Oven and Dishwasher
- ✓ Monier Atura low-profile roof tiles
- ✓ Clipsal Iconic Ultramodern range Switch Gear
- ✓ 2590mm Ceiling Upgrade

Estate Features:

- ✓ Lucas Heights Community School
- ✓ Menai Central Shopping Plaza
- ✓ Sutherland Station



ENQUIRE NOW:

Jillian Stokes • P: 0415 301 615 • E: greaterwollongong@adenbrook.com.au

Plans and designs depicted may change with facade selection. All drawings and photographs are for illustrative purposes only. This work is exclusively owned by AB Aust. IP Pty Ltd (ACN 163 575 077) and cannot be reproduced or copied wholly or in part, in any form without permission of AB Aust. IP Pty Ltd. Any prices in this document include GST, are subject to change without notice, relate only to the base house price and standard inclusions. Site costs will vary depending on site conditions, local Council requirements, estate guidelines and any other statutory requirements applicable. Adenbrook Homes does not have a hold on the block, this package is subject to land availability and you securing the land through the land agent directly. For more information please speak to one of our friendly New Home Consultants.